

DISCOVER NEW FRONTIERS



2025

ORIENTATION PROGRAMME
Unit For Distance Learning

DOWNLOAD THE **#MYNWU APP**

For everything you need to know about
Registration & Orientation



Features

-  NEWS UPDATES
-  ORIENTATION CALENDAR
-  PUSH NOTIFICATIONS
-  STUDENT EVENTS

Available to download on:



TABLE OF CONTENTS



WELCOME TO THE NORTH-WEST UNIVERSITY	<u>PAGE 4</u>
NWU OFFICE BEARERS	<u>PAGE 5</u>
NWU STUDENT LEADERSHIP STRUCTURES	<u>PAGE 6</u>
WELCOME LETTERS	<u>PAGE 7</u>
REGISTRATION PERIOD FOR FIRST-YEAR STUDENT	<u>PAGE 11</u>



DATES

FRIDAY, 07 FEBRUARY 2025	<u>PAGE 11</u>
---------------------------------	-----------------------

North-West University

Bragging rights



Top 7 University

NWU ranks among the top seven South African universities in the 2024 Academic Ranking of World Universities (ARWU).



Top 4.2% world's best universities

The Center for World University Rankings (CWUR) places NWU in the top 4.2% of the world's best universities.



Top 8 universities in Africa

NWU is also recognized as one of the top eight universities in Africa for environmental sustainability.

Find out more: <https://www.nwu.ac.za/rankings>

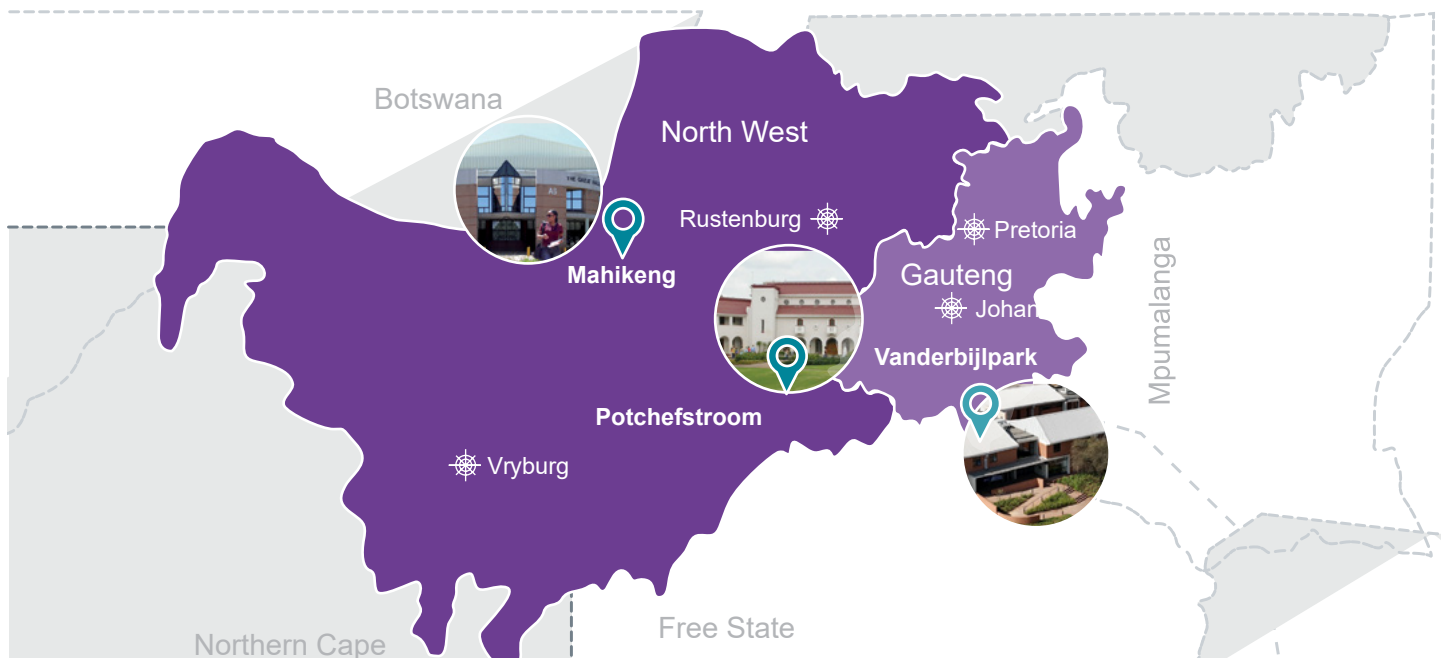
Discover new frontiers at North-West University (NWU) – one of Africa's top universities!
NWU offers a world-class education to an international student body from over 65 countries.

What can NWU offer you?

- Affordable, quality higher education.
- A safe and inclusive teaching and learning environment.
- High rating of employability as a result of our co-curricular offerings.
- Quality expertise with nationally and internationally-rated academics and world-class research facilities.
- Strong co-curricular and vibrant student life.
- Thriving sport – NWU boasts a great sports culture, with successes that have seen us ranked as champions in successive years.

What sets us apart

Our core activities, teaching and learning and research, are intertwined with community engagement and innovation in our eight faculties, most of which serve both distance and contact students.





OFFICE BEARERS

University Management



Dr Anna Mokgokong
Chancellor



Prof Bismark Tyobeka
Principal and Vice-Chancellor



Prof Linda du Plessis
Deputy Vice-Chancellor:
Teaching and Learning | Vice-Principal



Prof Marlene Verhoef
Registrar



Prof Sonia Swanepoel
Deputy Vice-Chancellor:
Community Engagement and
Mahikeng Campus Operations



Prof Daryl Balia
Deputy Vice-Chancellor:
Information Technology and
Potchefstroom Campus Operations



Prof Jeffrey Mphahlele
Deputy Vice-Chancellor:
Research and Innovation



Prof Sibusiso Chalufu
Acting Deputy Vice-Chancellor
(Vanderbijlpark Campus)
Executive Director: Student Life



Mr Clement Manoko
Executive Director:
Corporate Relations and Marketing



Mrs Elmarie de Beer
Executive Director:
Finance and Facilities



Mr Milton Nyamadzawo
Acting Executive Director:
People and Culture

Executive Deans



Prof Babs Surujal
Executive Dean: Faculty of
Economic and
Management Sciences



Prof Lloyd Conley
Executive Dean:
Faculty of Education



Prof Liezi van Dyk
Executive Dean:
Faculty of Engineering



Prof Awie Kotzé
Executive Dean: Faculty
of Health Sciences



Prof Dumi Moyo
Executive Dean:
Faculty of Humanities



Prof Neo Morei
Executive Dean:
Faculty of Law



Prof David Modise
Executive Dean: Faculty of Natural and
Agricultural Sciences

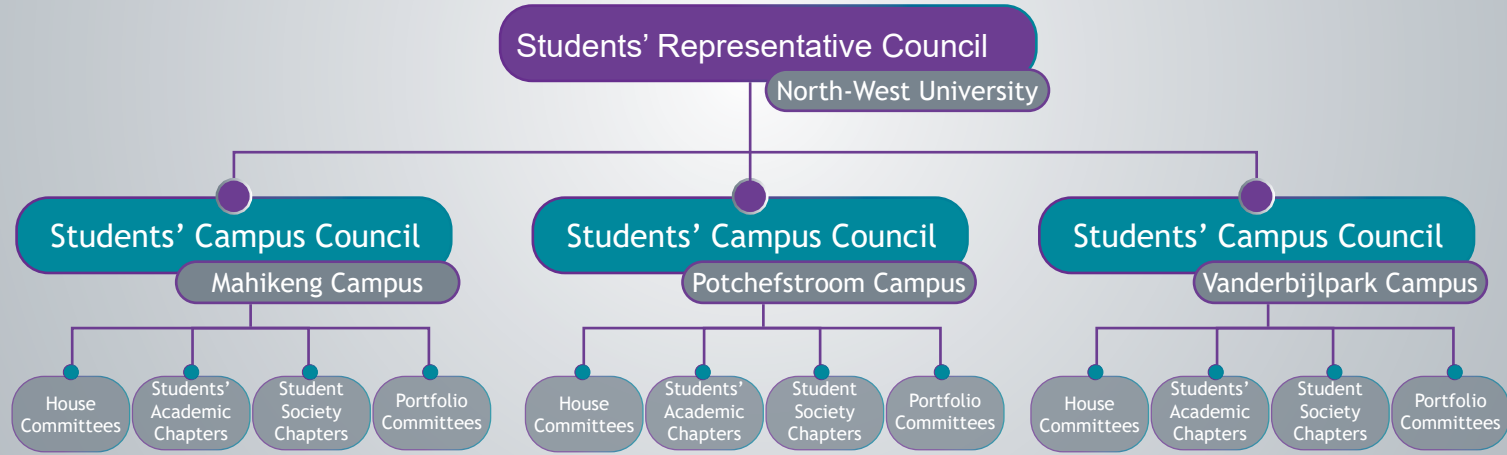


Prof Hennie Goede
Executive Dean:
Faculty of Theology



NWU

Student Leadership Structures



NORTH-WEST UNIVERSITY
Students' Representative Council 2024/25



Kamohelo Zwane
SRC: President



Reuben Coetzer
SRC: Deputy-President



Obakeng Sefodi
SRC: Secretary-General



Dean Dube
SRC: Transformation and Diversity
Officer with Current Affairs



Katlego Mmokwa
SRC: Distance Students'
Officer



Celimpilo Manqele
SRC: Academic Officer



Khethiwe Nhlapo
SRC: Arts and Culture Officer



Musa Bizani
SRC: Community and Stake-
holder Engagement Officer



Nomsa Hlongwane
SRC: Fundraising and
Projects Officer



Kgopotso Sekgobela
SRC: Legal Officer



Masego Maboye
SRC: Marketing and Public
Relations Officer



Rebecca Mantso
SRC: Residence Officer
(Acting)



Tshepiso Tau
SRC: Sport Officer



Thabang Mnculwane
SRC: Societies Liaison and
International Students' Officer



Poppy Machete
SRC: Treasurer-General

Message from

PROF BISMARCK TYOBEKA

PRINCIPAL AND VICE-CHANCELLOR



Dear First-Year Students of 2025

A warm and heartfelt welcome to the North-West University (NWU)! Congratulations on making a life-changing decision to join our vibrant and diverse community. This is the beginning of an extraordinary academic journey, one that will challenge, inspire, and transform you.

As you embark on this new chapter, NWU becomes your home away from home. Here, you will not only receive a world-class education but also gain access to countless opportunities to grow personally and professionally. Our commitment to academic excellence, research innovation, community engagement, and a dynamic Student Life ensures that your time with us will be both enriching and rewarding.

I encourage you to approach the Orientation Programme with enthusiasm and an open mind. This essential phase is designed to help you navigate university life, build meaningful connections, and discover the resources and support systems available to help you thrive. From academic assistance to mental health services and co-curricular activities, we are here to support your success every step of the way.

At the NWU, diversity and inclusion are the cornerstones of our values. Our vibrant campus environment celebrates the richness of different cultures, perspectives, and ideas. Embrace these opportunities to engage with people from all walks of life and prepare yourself for an interconnected, multicultural world. We are unwavering in our commitment to creating a safe, respectful, and inclusive community. Bullying, harassment, racism, and gender-based violence will be met with zero tolerance at NWU, as we remain committed to actively promoting a culture of respect, inclusion, and collaboration.

Your safety and well-being are our priorities, and we continue to enhance measures to ensure that our campuses remain safe and welcoming spaces for all. Remember, you are not alone on this journey. Your peers, lecturers, and support staff are here to guide and encourage you.

As you take your first steps, be inspired by the countless successful graduates who once stood where you are today. Many of them forged lifelong friendships, discovered their passions, and achieved their dreams during their time at the NWU. Now it is your turn to seize the opportunities before you - dive into your studies, participate in student activities, and embrace the adventures that come with university life.

Believe in yourself, cherish the values instilled by your loved ones, and trust in your potential to make a difference. The journey ahead is yours to shape - dream big, work hard, and make your mark.

Welcome to the NWU family! Your story begins here.



Message from
PROF LINDA DU PLESSIS

DEPUTY VICE-CHANCELLOR:
TEACHING AND LEARNING

Dear First-year Student

I am delighted to welcome you to the NWU!

Let me first congratulate you on your matric results and on gaining admission to study at the North-West University (NWU). Becoming a student at the NWU is a big achievement and a privilege that many have sought without success.

NWU is a dynamic University offering quality qualifications in contact and distance learning modes. We are known for our academic quality and excellent student support services. The University is ranked amongst the top universities in South Africa and our subject expertise is globally recognised. This reaffirms to you that you made the right choice. With the North-West University, you have the potential to become greater...

Here you obtain more than a degree, you also get a life experience to lay the foundation for a fulfilling and productive professional future. A NWU qualification will provide you with a strategic edge in the world of work. I therefore encourage you to follow the guidelines, timelines and frameworks provided in the distance environment. Please visit our website and eFundi regularly and read all the communiques you receive from the university.

As a distance student, you have a responsibility to apply time management skills and be digitally literate. In today's fast-paced digital world, learning is more dynamic and accessible than ever before. The way we acquire knowledge has transformed, and understanding how to navigate this evolving landscape is crucial. We provide support to our students in navigating this environment, so we encourage you to make use of our online support services! These services will enable you to become a successful student, embracing self-directed learning and developing into a future-ready professional.

Remember great opportunities come to all, and the secret of success in life is to be ready to grasp them when they arrive.

Welcome to the NWU!



Message from
PROF SIBUSISO CHALUFU

EXECUTIVE DIRECTOR: STUDENT LIFE

Dear First-year Student

On behalf of NWU Student Life, I would like to welcome you, our First-year Students, and congratulate you on completing your high school education. Through achieving this milestone, you have already displayed great perseverance and dedication towards achieving your full potential – something that will come handy as you continue to discover your bright future ahead.

As Student Life we strive to enable your holistic development by ensuring that you become a well-rounded, innovative, and socially responsible citizen of the world. The NWU is committed to providing a diverse, safe and valuable student experience through a rich variety of co-curricular programmes and activities including arts and culture, sports, student leadership, residence life, student media, health and psycho-social support.

The 2025 Orientation Programme has been planned to assist you in seamlessly joining the NWU community whilst enjoying our vibrant Student Life. It is important that you participate in this programme to ensure that you acquire the necessary skills and information needed to commence with your academic programme, access support services, and embrace co-curricular opportunities and residence life experiences. Acquiring these skills will enable you to navigate your first few months at the NWU with ease, and thereafter successfully complete your academic journey towards graduation!

From today onwards you are part of the NWU community of staff and students who are here to support and guide you every step of the way. I implore you to explore, use and enjoy the wealth of opportunities available to you, remembering that exciting new horizons lie ahead.

I further encourage you to continue to persevere and rise above your circumstances, thereby ensuring that your goals and dreams are realised. Remain confident and know that with our support and encouragement YOU WILL ACHIEVE SUCCESS.

I wish you everything of the best during your time at the NWU – embrace every moment and remember:

"It all starts here®."



Message from
DR JOANY FRANSMAN

DIRECTOR: UNIT FOR DISTANCE LEARNING

Dear First-year Student

It is with great excitement that I welcome you to the North-West University (NWU) and our vibrant Distance Learning community. Congratulations on taking the first step toward a journey that will transform your future! Today, you are not just starting a new academic chapter, you are joining a supportive and inclusive family where you truly belong.

At the NWU, we understand that choosing Distance Learning is more than a decision about flexibility or convenience, it's a commitment to personal growth, academic success, and achieving your dreams. While you may study from different places, our Distance Learning platform is designed to make you feel connected, valued, and part of a dynamic community of learners.

Belonging is a cornerstone of the NWU experience. Through our interactive eFundi platform, online discussions, and virtual resources, you will engage with your lecturers, connect with your peers, and access the support you need to thrive. Our dedicated student support services ensure you are never alone, help is always just a message, email, or call away.

Distance learning can sometimes feel isolating, but at the NWU we believe in fostering relationships and building a network where everyone matters. Your ideas, experiences, and ambitions enrich our community and contribute to its diversity and strength. We are here to celebrate your successes and guide you through any challenges you might face.

You belong here, and this is your space to grow, learn, and achieve greatness. Embrace the opportunities ahead with confidence, knowing that the University is with you every step of the way. Together, we'll make this journey meaningful, impactful, and unforgettable.

Welcome to the NWU Distance Learning family; a place where you are seen, supported, and inspired to reach new heights.

We are so excited to see all that you will accomplish!



Message from
KAMOHELO ZWANE

SRC PRESIDENT

Dear First-year Student

Congratulations on your admission to the North-West University!

On behalf of the Students' Representative Council (SRC) I would like to extend a warm welcome to the North-west University (NWU), congratulations for taking this step towards shaping your future.

As you all begin this journey, I want to assure you that you made an excellent choice in choosing the NWU. The university has a vibrant community, dedicated to academic excellence, transformation and student development. From this point onwards, your campus is known as a home-away-from-home for all students, including our international students.

As the SRC: President, I encourage you to step outside of your comfort zone and explore the various opportunities that Student Life has to offer. Here you will discover many opportunities to participate in the co-curricular activities and our vibrant student life.

The next chapter of your life is the most exciting, and I don't want you to miss out on anything that the NWU has to offer. I highly recommend that you participate in numerous co-curricular activities including sports, arts and culture, student leadership, social engagements, and more. We strive to create an environment where you all will feel valued, supported, and empowered to reach your full potential and soar.

It is important to know that you are not alone as you begin your journey at the NWU. Although you will face challenges during this time, you should not be discouraged because we will be there for you every step of the way. The SRC, student leaders, staff and fellow students are all working together to ensure that you have a memorable and exciting university experience. Please do not hesitate to contact us should you require assistance.

I challenge you to start making a difference here at North-West University and when it's your time to leave, may you leave a better institution than you found it.

"It all starts here®."

UNIT FOR DISTANCE LEARNING

2025 ORIENTATION PROGRAMME

The following virtual orientation workshop is presented to First-year students registered for a programme offered by the Unit for Distance Learning. First-year students are also invited to attend the virtual welcoming day hosted on Saturday 08 February 2025

FRIDAY 07 FEBRUARY 2025

Links to the online orientation session will be published at the end of January 2025.

Unit For Distance Learning	
Time	Activity
09:00-09:15	Welcoming by the Director
09:15-09:30	The link between Unit for Distance and other department offering services for both contact and distance – DSSS
09:30-09:45	Academic Manager: Natural & Agricultural Science Law Engineering
09:45-10:00	Quality office - Quality Manager
10:00-10:15	e-Learning Support
10:15-10:30	Academic Manager: Humanities
10:30-10:45	Comfort break
10:45-11:00	Academic Manager: Education
11:00-11:15	Academic Manager: Theology
11:15-11:30	Closing remarks

WELCOMING EVENT

SATURDAY 08 FEBRUARY 2025

Links to the online orientation session will be published at the end of January 2025.

Programme Event	Presenter
Welcoming and Introduction	-
Message from Students' Representative Council President (virtual)	Mr Kamohelo Zwane
Message from Executive Director: Student Life (virtual)	Prof Sibusiso Chalufu
Entertainment	-
Message from Vice-Chancellor and Principal(virtual)	Prof Bismark Tyobeka
University Anthem	-



Don't hesitate to get in touch with us and talk to one of our ambassadors.
We are ready to answer your questions!

Thoughts-and-complaints line: SMS

DISTANCE LEARNING: 33139

Fraud hotline / reporting email:

report-fraud@nwu.ac.za

WhatsApp line:
060 070 2606



Email:
studies@mynwu.ac.za

SMS line:
33139



Find us on our NWU Website:
studies.nwu.ac.za



It's more than a greeting!

The #NWUEagles see language as a bridge instead of a barrier. We like talking to one another and use different languages to understand each other. Along the way, we broaden our horizons and make each other feel a little more welcome.

It all starts here® ... with a hello!



Got a question? Get in touch!



0860 169698 (0860 1mynwu) - Toll free



studies@nwu.ac.za



060 070 2606



33139

Join our online NWU Family!



NWU - North-West University



North-West University



North-West University



theNWU



@theNWU



NWU - North-West University

