

DISCOVER NEW FRONTIERS



2025

ORIENTATION PROGRAMME
MAHIKENG CAMPUS

DOWNLOAD THE #MYNWU APP

For everything you need to know about
Registration & Orientation



Features

-  NEWS UPDATES
-  ORIENTATION CALENDAR
-  PUSH NOTIFICATIONS
-  STUDENT EVENTS

Available to download on:



TABLE OF CONTENTS



WELCOME TO THE NORTH-WEST UNIVERSITY	<u>PAGE 4</u>
NWU OFFICE BEARERS	<u>PAGE 5</u>
NWU STUDENT LEADERSHIP STRUCTURES	<u>PAGE 6</u>
WELCOME LETTERS	<u>PAGE 8</u>
NWU STUDENT ACCESS CARD	<u>PAGE 11</u>
NWU, MAHIKENG CAMPUS MAP	<u>PAGE 12</u>
REGISTRATION PERIOD FOR FIRST-YEAR STUDENT	<u>PAGE 14</u>

DATES

SATURDAY, 01 FEBRUARY 2025	<u>PAGE 14</u>
SUNDAY, 02 FEBRUARY 2025	<u>PAGE 15</u>
MONDAY, 03 FEBRUARY 2025	<u>PAGE 15</u>
TUESDAY, 04 FEBRUARY 2025	<u>PAGE 17</u>
WEDNESDAY, 05 FEBRUARY 2025	<u>PAGE 20</u>
THURSDAY, 06 FEBRUARY 2025	<u>PAGE 22</u>
FRIDAY, 07 FEBRUARY 2025	<u>PAGE 25</u>
SATURDAY, 08 FEBRUARY 2025	<u>PAGE 30</u>

North-West University

Bragging rights



Top 7 University

NWU ranks among the top seven South African universities in the 2024 Academic Ranking of World Universities (ARWU).



Top 4.2% world's best universities

The Center for World University Rankings (CWUR) places NWU in the top 4.2% of the world's best universities.



Top 8 universities in Africa

NWU is also recognized as one of the top eight universities in Africa for environmental sustainability.

Find out more: <https://www.nwu.ac.za/rankings>

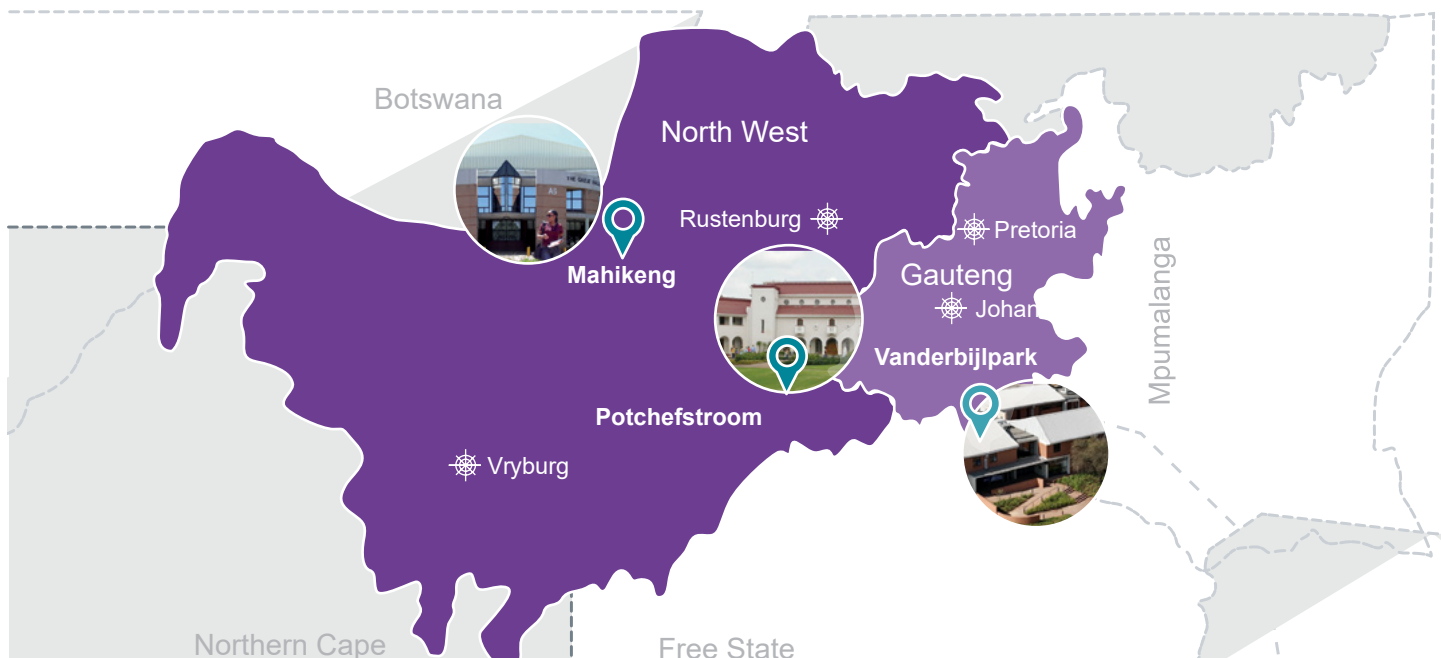
Discover new frontiers at North-West University (NWU) – one of Africa's top universities!
NWU offers a world-class education to an international student body from over 65 countries.

What can NWU offer you?

- Affordable, quality higher education.
- A safe and inclusive teaching and learning environment.
- High rating of employability as a result of our co-curricular offerings.
- Quality expertise with nationally and internationally-rated academics and world-class research facilities.
- Strong co-curricular and vibrant student life.
- Thriving sport – NWU boasts a great sports culture, with successes that have seen us ranked as champions in successive years.

What sets us apart

Our core activities, teaching and learning and research, are intertwined with community engagement and innovation in our eight faculties, most of which serve both distance and contact students.





OFFICE BEARERS

University Management



Dr Anna Mokgokong
Chancellor



Prof Bismark Tyobeka
Principal and Vice-Chancellor



Prof Linda du Plessis
Deputy Vice-Chancellor:
Teaching and Learning | Vice-Principal



Prof Marlene Verhoef
Registrar



Prof Sonia Swanepoel
Deputy Vice-Chancellor:
Community Engagement and
Mahikeng Campus Operations



Prof Daryl Baia
Deputy Vice-Chancellor:
Information Technology and
Potchefstroom Campus Operations



Prof Jeffrey Mphahlele
Deputy Vice-Chancellor:
Research and Innovation



Prof Sibusiso Chalufu
Acting Deputy Vice-Chancellor
(Vanderbijlpark Campus)
Executive Director: Student Life



Mr Clement Manoko
Executive Director:
Corporate Relations and Marketing



Mrs Elmarie de Beer
Executive Director:
Finance and Facilities



Mr Milton Nyamadzawo
Acting Executive Director:
People and Culture

Executive Deans



Prof Babs Surujal
Executive Dean: Faculty of
Economic and
Management Sciences



Prof Lloyd Conley
Executive Dean:
Faculty of Education



Prof Liezl van Dyk
Executive Dean:
Faculty of Engineering



Prof Awie Kotzé
Executive Dean: Faculty
of Health Sciences



Prof Dumi Moyo
Executive Dean:
Faculty of Humanities



Prof Neo Morei
Executive Dean:
Faculty of Law



Prof David Modise
Executive Dean: Faculty of Natural and
Agricultural Sciences

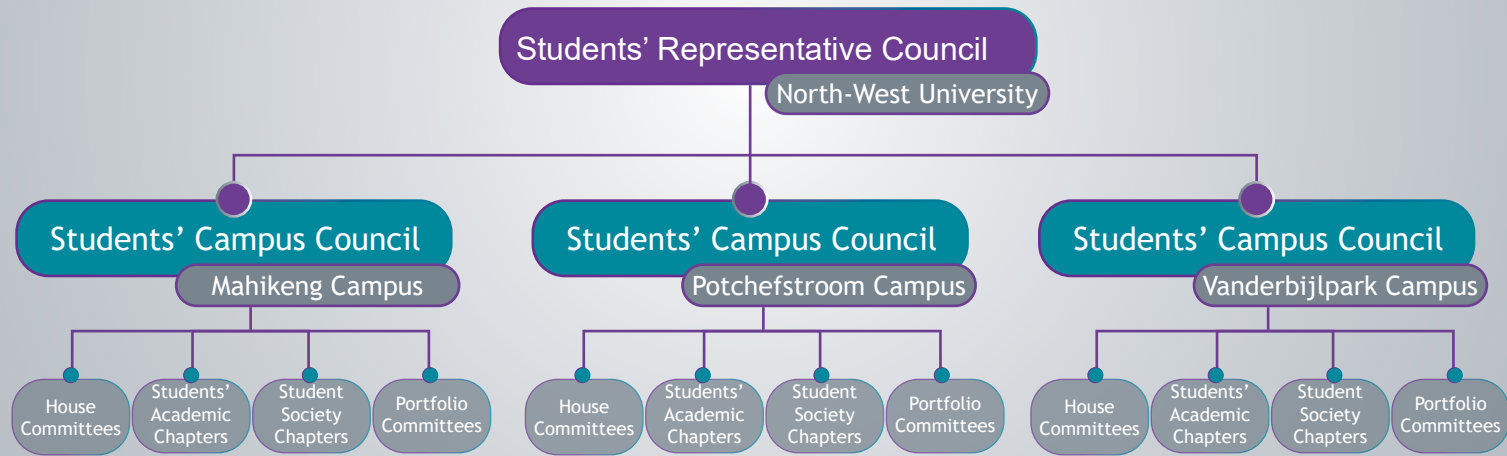


Prof Hennie Goede
Executive Dean:
Faculty of Theology



NWU

Student Leadership Structures



NORTH-WEST UNIVERSITY Students' Representative Council 2024/25



Kamohelo Zwane
SRC: President



Reuben Coetzer
SRC: Deputy-President



Obakeng Sefodi
SRC: Secretary-General



Dean Dube
SRC: Transformation and Diversity
Officer with Current Affairs



Katlego Mmokwa
SRC: Distance Students'
Officer



Celimpilo Manqele
SRC: Academic Officer



Khethiwe Nhlapo
SRC: Arts and Culture Officer



Musa Bizani
SRC: Community and Stakeholder
Engagement Officer



Nomsa Hlongwane
SRC: Fundraising and
Projects Officer



Kgopotso Sekgobela
SRC: Legal Officer



Masego Maboye
SRC: Marketing and Public
Relations Officer



Rebecca Mantso
SRC: Residence Officer
(Acting)



Tshepiso Tau
SRC: Sport Officer



Thabang Mnculwane
SRC: Societies Liaison and
International Students' Officer



Poppy Machete
SRC: Treasurer-General



Obakeng Sefodi
 SCC: Chairperson



Nomsa Hlongwane
 SCC: Deputy-Chairperson



Kgopotso Sekgobela
 SCC: Secretary



Khonadzeo Mudau
 SCC: Transformation and Diversity
 Officer with Current Affairs



Khangwelo Mulaudzi
 SCC: Academic Officer



Dikeledi Mogajane
 SCC: Arts and Culture Officer



Ditebogo Nkosi
 SCC: Community and
 Stakeholder Engagement
 Officer



Reamogetse Letsoalo
 SCC: Fundraising and RAG
 Officer



Masego Diale
 SCC: Legal Officer



Vanto Moleleki
 SCC: Marketing and Public
 Relations Officer



Emanuel Selota
 SCC: Residence Officer



Cindy Khaphathe
 SCC: Students' Interest and
 Development Officer



Relation Seobela
 SCC: Sport Officer



Felicity Sibabela
 SCC: Societies' Liaison and
 International Students' Officer



Poppy Machete
 SCC: Treasurer

List of abbreviations

- SRC:** Students' Representative Council
- SCC:** Students' Campus Council
- HC:** House Committee
- SAC:** Students' Academic Chapter
- PC:** Portfolio Committee

Quick facts on student leadership structures

- The SRC comprised of 15 members representative of each campus.
- The SRC is the highest ranking student leadership structure at the NWU.
- An SCC of 15 members is annually elected for each Campus, with the SCCs being accountable to the SRC.
- House Committees are annually elected for each university residence and day house, per campus.
- Students' Academic Chapters are annually elected for each Faculty, per campus.
- Portfolio Committees assist the SCCs in coordinating Student Life activities.
- Student Society Chapters are annually established for a variety of interest groups including arts and culture, religion, social rights, etc.

Message from

PROF BISMARCK TYOBEKA

PRINCIPAL AND VICE-CHANCELLOR



Dear First-Year Students of 2025

A warm and heartfelt welcome to the North-West University (NWU)! Congratulations on making a life-changing decision to join our vibrant and diverse community. This is the beginning of an extraordinary academic journey, one that will challenge, inspire, and transform you.

As you embark on this new chapter, NWU becomes your home away from home. Here, you will not only receive a world-class education but also gain access to countless opportunities to grow personally and professionally. Our commitment to academic excellence, research innovation, community engagement, and a dynamic Student Life ensures that your time with us will be both enriching and rewarding.

I encourage you to approach the Orientation Programme with enthusiasm and an open mind. This essential phase is designed to help you navigate university life, build meaningful connections, and discover the resources and support systems available to help you thrive. From academic assistance to mental health services and co-curricular activities, we are here to support your success every step of the way.

At the NWU, diversity and inclusion are the cornerstones of our values. Our vibrant campus environment celebrates the richness of different cultures, perspectives, and ideas. Embrace these opportunities to engage with people from all walks of life and prepare yourself for an interconnected, multicultural world. We are unwavering in our commitment to creating a safe, respectful, and inclusive community. Bullying, harassment, racism, and gender-based violence will be met with zero tolerance at NWU, as we remain committed to actively promoting a culture of respect, inclusion, and collaboration.

Your safety and well-being are our priorities, and we continue to enhance measures to ensure that our campuses remain safe and welcoming spaces for all. Remember, you are not alone on this journey. Your peers, lecturers, and support staff are here to guide and encourage you.

As you take your first steps, be inspired by the countless successful graduates who once stood where you are today. Many of them forged lifelong friendships, discovered their passions, and achieved their dreams during their time at the NWU. Now it is your turn to seize the opportunities before you - dive into your studies, participate in student activities, and embrace the adventures that come with university life.

Believe in yourself, cherish the values instilled by your loved ones, and trust in your potential to make a difference. The journey ahead is yours to shape - dream big, work hard, and make your mark.

Welcome to the NWU family! Your story begins here.



Message from

PROF SONIA SWANEPOEL

DEPUTY VICE-CHANCELLOR:
COMMUNITY ENGAGEMENT AND
MAHIKENG CAMPUS OPERATIONS

Dear First-year Student

Welcome to the North-West University!
We salute you for achievement in completing your high school education in 2024. Your perseverance led you to pass and be accepted at this university. It is indeed an achievement and a great milestone. We are delighted that you choose the North-West University (NWU) as your university of choice. Congratulations!

From school to university is a big gap and with more freedom comes equal more responsibility and accountability. If your first assessment in a module provides a challenge, your first port of call is to consult with your lecturer for advice and assistance. We can only assist you when we are aware that you have a challenge or experiencing difficulties. Your main purpose for enrolling for the class of 2025 at NWU is to succeed in your studies, therefore stay focused on your academic performance as a priority. As part of our academic project, we want to instil graduate attributes and when you graduate, you should be a responsible citizen, a knowledgeable professional, innovative and critical thinker, skilled collaborator, an effective communicator and a principled leader.

The university provides a variety of support services to students from psycho-social counselling to study methods, all free of charge. These include amongst others, the library, Centre for Teaching and Learning, laboratories, campus health care centres, etc. I encourage you to make use of available resources that will contribute positively to the three areas of life namely, living, learning and working.

Our aim is to deliver well-rounded students and in this regard the university offers many activities from sport to cultural activities and student leadership opportunities. The Student Life department is ready to contribute to your exciting, diverse and vibrant student experience. While it is important to excel in academia, it is equally important to participate in NWU activities such as community engagement projects where we share our expertise and knowledge with the communities around the university campus. It is also our wish for you to engage in the activities that are meant to protect our environment as a caring citizen.

When you have fun time flies and before you know it, your university life will be over, walking over the stage at graduation, whereafter the real world awaits. The NWU will ensure that you are well equipped for the next phase of your life.
Let us join hands and shape your future! We wish you everything of the best for your studies at NWU!

"It all starts here®."



Message from

PROF SIBUSISO CHALUFU

EXECUTIVE DIRECTOR: STUDENT LIFE

Dear First-year Student

On behalf of NWU Student Life, I would like to welcome you, our First-year Students, and congratulate you on completing your high school education. Through achieving this milestone, you have already displayed great perseverance and dedication towards achieving your full potential – something that will come handy as you continue to discover your bright future ahead.

As Student Life we strive to enable your holistic development by ensuring that you become a well-rounded, innovative, and socially responsible citizen of the world. The NWU is committed to providing a diverse, safe and valuable student experience through a rich variety of co-curricular programmes and activities including arts and culture, sports, student leadership, residence life, student media, health and psycho-social support.

The 2025 Orientation Programme has been planned to assist you in seamlessly joining the NWU community whilst enjoying our vibrant Student Life. It is important that you participate in this programme to ensure that you acquire the necessary skills and information needed to commence with your academic programme, access support services, and embrace co-curricular opportunities and residence life experiences. Acquiring these skills will enable you to navigate your first few months at the NWU with ease, and thereafter successfully complete your academic journey towards graduation!

From today onwards you are part of the NWU community of staff and students who are here to support and guide you every step of the way. I implore you to explore, use and enjoy the wealth of opportunities available to you, remembering that exciting new horizons lie ahead.

I further encourage you to continue to persevere and rise above your circumstances, thereby ensuring that your goals and dreams are realised. Remain confident and know that with our support and encouragement **YOU WILL ACHIEVE SUCCESS.**

I wish you everything of the best during your time at the NWU – embrace every moment and remember:

"It all starts here®."



Message from
KAMOHELO ZWANE

SRC PRESIDENT

Dear First-year Student

Congratulations on your admission to the North-West University! On behalf of the Students' Representative Council (SRC) I would like to extend a warm welcome to the North-west University (NWU), congratulations for taking this step towards shaping your future.

As you all begin this journey, I want to assure you that you made an excellent choice in choosing the NWU. The university has a vibrant community, dedicated to academic excellence, transformation and student development. From this point onwards, your campus is known as a home-away-from-home for all students, including our international students.

As the SRC: President, I encourage you to step outside of your comfort zone and explore the various opportunities that Student Life has to offer. Here you will discover many opportunities to participate in the co-curricular activities and our vibrant student life. The next chapter of your life is the most exciting, and I don't want you to miss out on anything that the NWU has to offer. I highly recommend that you participate in numerous co-curricular activities including sports, arts and culture, student leadership, social engagements, and more. We strive to create an environment where you all will feel valued, supported, and empowered to reach your full potential and soar.

It is important to know that you are not alone as you begin your journey at the NWU. Although you will face challenges during this time, you should not be discouraged because we will be there for you every step of the way. The SRC, student leaders, staff and fellow students are all working together to ensure that you have a memorable and exciting university experience. Please do not hesitate to contact us should you require assistance.

I challenge you to start making a difference here at North-West University and when it's your time to leave, may you leave a better institution than you found it.

"It all starts here®."



Message from
OBAKENG SEFODI

SCC CHAIRPERSON

Dear First-year Student

Congratulations! The North-West University (NWU) is excited to welcome you all! You are about to embark on an incredible journey of personal growth, academic achievement, and unforgettable experiences. Rest assured, our university management, student leaders, and senior students are here to support and guide you as you unlock your fullest potential.

At the NWU, we are committed not only to academic excellence but also to fostering talents in sports, arts, leadership development, and a wide range of opportunities that contribute to a dynamic and fulfilling Student Life. You'll soon discover these exciting aspects of the NWU as you immerse yourself in campus life.

The Orientation Programme is designed to ease your transition into university life. It's your chance to familiarize yourself with your campus, understand its operations, and embrace NWU's culture. The programme will equip you with insights into the challenges you may face and strategies to navigate them successfully. While you might not remember everything immediately, don't worry—we'll be here every step of the way to guide and support you. Moreover, you'll have the chance to meet fellow students who will make your university journey enriching and memorable.

As you settle into your new home for the next few years, know that you are never alone. Should you need assistance, don't hesitate to reach out to student leaders, senior students, or university staff, all of whom are ready to help.

We are excited about the fresh ideas, enthusiasm, and energy you bring to NWU.

Once again, Welcome to the North-West University - your journey begins here!

NWU STUDENT ACCESS CARD

What is it?

Identity confirmation card declaring you as a student of the NWU.

Collect your Student Access Card from:
Building A16, Room G99

First Student Access card: Free
Replacement: R80.00



What is it used for?

Your student card provides access to the NWU Campus, including:

- Main gates
- Turnstiles
- General access to buildings
- University residences (only registered residents of the university residence)
- Taking attendance in the class and examination rooms

Did you know?

Your student number is automatically generated when you apply at the North-West University. Consecutive numbers differ with a number of 8, e.g. 12345686 will be the follow-up of 12345678. The last two numbers are of such a nature that no two students will have the same first six numbers, e.g. if a number is 12345671 there cannot be a student number 12345679.

[Watch here](#)



BUILDINGS

- A**
 - A-1 ADMINISTRATION BUILDING
 - A-2 BASE BUILDING
 - A-3 GENERAL ACADEMIC BUILDING
 - A-4 PHYSICAL SCIENCE BUILDING
 - A-5 CENTRAL LECTURE BUILDING
 - A-6 THE GREAT HALL
 - A-7 LIBRARY
 - A-8 STUDENT CENTRE
 - A-9 EDUCATION SCIENCE BUILDING
 - A-10 NEW LECTURE HALL
 - A-12 SCIENCE BUILDING
 - A-13 NURSING SCIENCES
 - A-14 LAW BUILDING
- B**
 - B-1 STUDENT RESIDENCE - SEDIBENG
 - B-2 STUDENT RESIDENCE - JAMES MOROKA
 - B-3 STUDENT RESIDENCE - MODIRI MOLEMA
 - B-4 STUDENT RESIDENCE - KGOSI DICK MONTSHIOA
 - B-5 STUDENT RESIDENCE - MBADA
 - B-6 STUDENT HEALTH CLINIC
 - B-7 STUDENT RESIDENCE - SOL PLAATJIE
- C**
 - C-2 STUDENT RESIDENCES - NELSON MANDELA 1
 - C-3 STUDENT RESIDENCES - NELSON MANDELA 2
- E**
 - E-1 STUDENT RESIDENCE SOUTH - LOST CITY
 - E-2 STUDENT RESIDENCE NORTH - LOST CITY
 - E-3 STUDENT RESIDENCE - WARDENS HOUSE
 - E-4 STUDENT RESIDENCE - HOPEVILLE
 - E-5 STUDENT RESIDENCE - KHAYELISHA
 - E-6 STUDENT RESIDENCE - HOUSE OF BIKO

MAHIKENG CAMPUS

ORIENTATION PROGRAMME

ARRIVAL OF FIRST-YEAR STUDENTS ON CAMPUSES

30 JANUARY - 02 FEBRUARY 2025

Following completion of their registration with the NWU, First-year students may proceed to move into their university residence (where applicable). The tables below provide the contact information of the relevant house parents of university residences.

ARRIVAL AND MOVING INTO UNIVERSITY RESIDENCES

08:00 - 17:00

University Residence	Venue	Contact Person	University Residence	Venue	Contact Person
Hopeville Ladies' Residence	Building E4A	Mr Tumi Mambo (018) 389 2948	Khayelitsha Men's Residence	Building E5A	Mr Tumi Mambo (018) 389 2948
Mbada Ladies' Residence	Building 5A	Mr Werner Du Toit (018) 389 2018	Kgosi Dick Montshioa Men's Residence	Building B4A	Mr Werner Du Toit (018) 389 2018
Sedibeng Ladies' Residence	Building 1C	Mr Ninan Samuel (018) 389 2541	Dr James Moroka Men's Residence	Building 2C	Mr Ninan Samuel (018) 389 2541
Ngaka Modiri Molema Ladies' Residence	Building 3F	Dr Neo Morei (018) 389 2484	Dr Nelson Mandela 2 Men's Residence	Building C2A.2	Ms Tlotlo Monakwane (018) 389 2442
Dr Nelson Mandela 1 Ladies' Residence	Building C2.2	Ms Tlotlo Monakwane (018) 389 2442	Khayaletu Men's Residence	Building C10	Mr Phenyo Mokgothu (018) 389 2276
Harmony Heights Ladies' Residence	Building C8	Dr Thami Ndlovu (018) 389 2441	Protea Men's Residence	Building C12	Ms Innocentia Mphuthi (018) 389 2457
Lesedi Ladies' Residence	Building C9	Ms Mariki Strauss (018) 389 2007	Lethabong Men's Residence	Building C13	Mr Ruan Meyer (018) 389 2958
Thutong Ladies' Residence	Building C11	Mr Jim Molautsi (018) 389 2156	Sol Plaatje mixed gender Residence	Building 7C	Ms Charmaine Molosioa (018) 389 2003

SATURDAY, 01 FEBRUARY 2025

WELCOMING EVENTS AT UNIVERSITY RESIDENCES AND DAY HOUSES FOR FIRST-YEAR STUDENTS, PARENTS, GUARDIANS, ETC.

12:00-13:00

Welcoming Events at University Residences and Day Houses

***A welcoming event for all parents and students who reside in University Residences or form part of a Day House will be held at the above indicated venues. Parents and students are encouraged to attend these events, where they will be introduced to the House Parent and House Committee and receive more information on the programme and year ahead.*

Venue: As indicated in table above

SUNDAY, 02 FEBRUARY 2025

BREAKFAST
06:30-07:45

RESIDENCE LIFE EXPERIENCE PROGRAMME

08:00 - 17:00

09:00–10:30

Interdenominational Service

Venue: Building A10, Room G02

LUNCH
13:00-14:00

14:00–17:00

SCC Indigenous Games

Venue: Relevant Residence Rec Hall

DINNER
17:00-19:00

19:00-19:30

Debriefing and Well-being Check-in with House Parent , House Committee and Peer Helper

PROGRAMME ENDS

19:30

MONDAY, 03 FEBRUARY 2025

BREAKFAST
06:30-07:45

**The following groups must attend the orientation sessions indicated BELOW:

Group 1

Faculty of Natural and Agricultural Sciences

Faculty of Theology

08:00–09:30

IT Presentation and Registration

Venue: Building A5, Room G12 (upstairs); Building A2F, Room G16; Building A5, Room G12 (downstairs)

09:30-11:30

Efundi Training

Venue: Building A5, Room G12 (upstairs); Building A2F, Room G16; Building A5, Room G12 (downstairs)

11:30-12:30

Busse And The First-Year Navigator: Your Gateway to Academic Success

Venue: Building A5 Room G12 (upstairs); Building A2F, Room G16; Building A5, Room G12 (downstairs)

12:30-13:30

Adjusting to Higher Education Learning: The Difference Between School and University

Venue: Building A5, Room G12 (upstairs); Building A2F, Room G16; Building A5, Room G12 (downstairs)

**The following groups must attend the orientation sessions indicated BELOW:

Group 2
Faculty of Health Sciences Faculty of Humanities Faculty of Law

08:30-09:30

Introduction to and access to Student Counselling and Development Services

Venue: Building A6, Great Hall

09:30-10:30

Introduction to and access to Campus Health Centre (PHC Services)

Venue: Building A6, Great Hall

10:30-11:30

Introduction to Campus Student Leadership

Venue: Building A6, Great Hall

11:30-12:30

Presentation by Career Centre

Venue: Building A6, Great Hall

12:30 -13:30

Collection of Student Access Cards

Venue: Building A16, Room G99

**The following groups must attend the orientation sessions indicated BELOW:

Group 3
Faculty of Education Faculty of Economic and Management Sciences

08:30-10:00

Campus Tour

Venue: Departure point – Building 06, Great Hall

- CLB Lecture Halls
- Base Building
- Computer Labs
- Disability Rights Unit
- Career Centre
- Library
- Students' Campus Council Office
- Protection
- Cafeteria
- Van Schaik Bookstore
- Nashua Printing
- University Residences
- Campus Health Care Centre
- Student Counselling and Development
- BossMike
- University Residences

10:00-11:30

Library and Information Services

Venue: Building 10, Rooms G01, G02 & G03

11:30-12:30

Presentation by Campus Radio Station

Venue: Building 10, Rooms G01, G02 & G03

12:30-13:00

#Discover my NWU: Learn the NWU Anthem and Values

Venue: Building 10, Rooms G01, G02 & G03

LUNCH
13:00-14:00

14:30–15:30

Language Awareness Presentation

Venue: Building A10, Rooms G01, G02 & G03

Group 1

Faculty of Natural and Agricultural Sciences
Faculty of Theology

14:30–15:30

Language Awareness Presentation

Venue: Building A8, Multipurpose Hall

Group 2

Faculty of Health Sciences
Faculty of Humanities
Faculty of Law

14:30–15:30

Language Awareness Presentation

Venue: Building A6, Great Hall

Group 3

Faculty of Education
Faculty of Economic and Management Sciences

DINNER
17:00-19:00

RESIDENCE LIFE EXPERIENCE PROGRAMME

19:00-21:00

19:00–20:30

Mental Health and Well-being

Venue: Relevant Residence Recreational Hall

20:30–21:00

Debriefing and Well-being Check-in with House Parent, House Committee and Peer Helper

PROGRAMME ENDS
21:00

***In addition to the formal orientation programme indicated in this programme, the Informal Residence Life Experience Programme as approved by the Campus Director: Student Life takes place throughout the period presented to university residence and day house students. The Informal Residence Life Experience Programme may continue until 21:30, as planned by the House Parent and House Committees, and approved by the Campus Director: Student Life. Students who are required to pre-prepare for the Mathematics Induction Courses, and other bridging courses offered by a Faculty may be excused from the informal programmes.*

TUESDAY, 04 FEBRUARY 2025

BREAKFAST
06:30-07:45

****The following groups must attend the orientation sessions indicated BELOW:**

Group 3

Faculty of Education
Faculty of Economic and Management Sciences

08:00–09:30

IT Presentation and Registration

Venue: Building A5, Room G12 (upstairs); Building A2F, Room G16; Building A5, Room G12 (downstairs)

09:30-11:30

eFund Training

Venue: Building A5, Room G12 (upstairs); Building A2F, Room G16; Building A5, Room G12 (downstairs)

11:30-12:30

Busse And The First-Year Navigator: Your Gateway to Academic Success

Venue: Building A5, Room G12 (upstairs); Building A2F, Room G16; Building A5, Room G12 (downstairs)

12:30-13:30

Adjusting to Higher Education Learning: The Difference Between School and University

Venue: Building A5, Room G12 (upstairs); Building A2F, Room G16; Building A5, Room G12 (downstairs)

**The following groups must attend the orientation sessions indicated BELOW:

Group 1
Faculty of Natural and Agricultural Sciences Faculty of Theology

08:30–09:30

Introduction to and access to Student Counselling and Development Services

Venue: Great Hall, Building A6

09:30–10:30

Introduction to and access to Campus Health Centre (Primary Health Care Services)

Venue: Great Hall, Building A6

10:30–11:30

Introduction to Campus Student Leadership

Venue: Great Hall, Building A6

11:30–12:30

#Discover my NWU:

Venue: Great Hall, Building A6

12:30–13:30

Collection of Student Access Cards

Venue: Building A16, Room G99

**The following groups must attend the orientation sessions indicated BELOW:

Group 2
Faculty of Health Sciences Faculty of Humanities Faculty of Law

08:30–10:00

Campus Tour

Venue: Departure point – Building 06, Great Hall

Venue: Building A16, Room G99

- CLB Lecture Halls
- Base Building
- Computer Labs
- Disability Rights Unit
- Career Centre
- Library
- Students' Campus Council Office
- Protection
- Cafeteria
- Van Schaik Bookstore
- Nashua Printing
- University Residences
- Campus Health Care Centre
- Student Counselling and Development
- BossMike
- University Residences

10:00–11:30

Library and Information Services

Venue: Building A10, Rooms G01, G02 & G03

11:30–12:30

Presentation by Campus Radio Station

Venue: Building A10, Rooms G01, G02 & G03

12:30–13:00

#Discover my NWU: Learn the NWU Anthem and Values

Venue: Building A10, Rooms G01, G02 & G03

MATHEMATICS INDUCTION COURSE AND AI TUTOR

11:00-13:00

11:00–13:00

Mathematics Induction Course and AI Tutor

Venue: Building A1, Room 114

First-year Students registered for the following programmes must attend the Mathematics Induction Course and AI Tutor:

Faculty of Natural Sciences	
<ul style="list-style-type: none"> • Applied Mathematics and Chemistry (2FF H13 - N301P/M) • Applied Mathematics and Electronics (2FF H14 - N301M) • Applied Mathematics and Mathematics (2FG H03 - N301M) • Chemistry and Computer Science (2FF H31 - N301M) • Chemistry and Geography (2DJ H18 - N301M) • Chemistry and Mathematics (2FF H11 - N301P/M) • Chemistry and Physics (2FF H05 - N301P/M) 	<ul style="list-style-type: none"> • Electronics and Mathematics (2FF H19 - N301M) • Electronics and Physics (2FF H20 - N301M) • Physics and Applied Mathematics (2FF H24 - N301P/M) • Physics and Computer Science (2FF H25 - N301P/M) • Physics and Mathematics (2FF H23 - N301P/M) • Computer Science and Electronics (2FF H17 - N301M) • Computer Science and Mathematics (2FF H09 - N301P/M/V)

LUNCH
13:00-14:00

**All student groups attend the afternoon sessions indicated below.

14:00–16:00

Safety Imbizo

Venue: Great Hall, Building A6

16:00–17:00

Cultural Union entertainment set

Venue: Great Hall, Building A6

DINNER
19:00-21:00

RESIDENCE LIFE EXPERIENCE PROGRAMME

19:00-21:00

19:00–20:30

Financial Literacy

Venue: Relevant Residence Recreational Hall

20:30–21:00

Debriefing and Well-being Check-in with House Parent, House Committee and Peer Helper

PROGRAMME ENDS

21:00

19:00–20:30

Informal Residence Life Experience Programme

WEDNESDAY, 05 FEBRUARY 2025

BREAKFAST 06:30-07:45

**The following groups must attend the orientation sessions indicated BELOW:

Group 2

Faculty of Health Sciences
Faculty of Humanities
Faculty of Law

08:00–09:30

IT Presentation and Registration

Venue: Building A5, Room G12 (upstairs); Building A2F, Room G16; Building A5, Room G12 (downstairs)

09:30-11:30

eFund Training

Venue: Building A5, Room G12 (upstairs); Building A2F, Room G16; Building A5, Room G12 (downstairs)

11:30-12:30

Busse And the First-Year Navigator: Your Gateway to Academic Success

Venue: Building A5, Room G12 (upstairs); Building A2F, Room G16; Building A5, Room G12 (downstairs)

12:30-13:30

Adjusting to Higher Education Learning: The Difference Between School and University

Venue: Building A5, Room G12 (upstairs); Building A2F, Room G16; Building A5, Room G12 (downstairs)

**The following groups must attend the orientation sessions indicated BELOW:

Group 3

Faculty of Education
Faculty of Economic and Management Sciences

08:30–09:30

Introduction to and access to Student Counselling and Development Services

Venue: Building A6, Great Hall

09:30–10:30

Introduction to and access to Campus Health Centre (PHC Services)

Venue: Building A6, Great Hall

10:30–11:30

Introduction to Campus Student Leadership

Venue: Building A6, Great Hall

11:30–12:30

Presentation by Career Centre

Venue: Building A6, Great Hall

12:30–13:30

Collection of Student Access Cards

Venue: Building A16, Room G99

**The following groups must attend the orientation sessions indicated BELOW:

Group 1

Faculty of Natural and Agricultural Sciences
Faculty of Theology

08:30–10:00

Campus Tour

Venue: Departure point – Building A6, Great Hall

- CLB Lecture Halls
- Base Building
- Computer Labs
- Disability Rights Unit
- Career Centre
- Library
- Students' Campus Council Office
- Protection
- Cafeteria
- Van Schaik Bookstore
- Nashua Printing
- University Residences
- Campus Health Care Centre
- Student Counselling and Development
- BossMike
- University Residences

10:00–11:30

Library and Information Services

Venue: Building A10, Rooms G01, G02 & G03

11:30–12:30

Presentation by Campus Radio Station

Venue: Building A10, Rooms G01, G02 & G03

12:30–13:00

#Discover my NWU: Learn the NWU Anthem and Values

Venue: Building A6, Great Hall

**All student groups attend this sessions.

LUNCH 13:00-14:00

**All student groups attend the afternoon sessions indicated below.

14:30–15:30

Presentation by Campus Disability Rights Unit (DRU)

- Available facilities in DRU
- Introduction to staff members in DRU
- Access to services
- Role play
- Presentation by DRU Alumni #MyVarsityExperience

15:30–17:00

Cultural Union entertainment set

Venue: Building A6, Great Hall

DINNER 17:00-19:00

STUDENT LIFE AND RESIDENCE LIFE EXPERIENCE PROGRAMME

19:00-21:00

19:00–20:30

Community Engagement and Environmental Awareness & NWU Values

Venue: Relevant Residence Recreational Hall

20:30–21:00

Debriefing and Well-being Check-in with House Parent, House Committee and Peer Helper

PROGRAMME ENDS

21:00

21:00–21:30

Informal Residence Life Experience Programme

THURSDAY, 06 FEBRUARY 2025

BREAKFAST
06:30-07:45

ORIENTATION PROGRAMME

08:00-17:00

****ATTENTION!** The following sessions are repeating sessions of orientation sessions already presented. These sessions must only be attended by First-year students who could not attend previous sessions.

08:00–10:00

****eFundi Training**

Venue: Building A5, Room G12 (upstairs); Building A1, Room 114; Building A2F, Room G16; Building A5, Room G12 (downstairs)

10:00-11:00

****BUSSE And The First-Year Navigator: Your Gateway to Academic Success**

Venue: Building A5, Room G12 (upstairs); Building A1, Room 114; Building A2F, Room G16; Building A5, Room G12 (downstairs)

11:00-12:00

****Adjusting to Higher Education Learning: The Difference Between School and University**

Venue: Building A5, Room G12 (upstairs); Building A1, Room 114; Building A2F, Room G16; Building A5, Room G12 (downstairs)

10:00–11:30

****Library and Information Services**

Venue: Building A8, Multipurpose Hall

12:00–13:00

****IT Presentation and Registration**

Venue: Building A2F, Room G16; Building A1, Room 114; Building A5, Room G12

MATHEMATICS INDUCTION COURSE AND AI TUTOR

11:00-13:00

11:00–13:00

Mathematics Induction Course and AI Tutor (Questions & Answer Session)

Venue: Building A1, Room 114

First-year Students registered for the following programmes must attend the Mathematics Induction Course and AI Tutor if any further assistance is required:

Faculty of Natural Sciences	
<ul style="list-style-type: none">Applied Mathematics and Chemistry (2FF H13 - N301P/M)Applied Mathematics and Electronics (2FF H14 - N301M)Applied Mathematics and Mathematics (2FG H03 - N301M)Chemistry and Computer Science (2FF H31 - N301M)Chemistry and Geography (2DJ H18 - N301M)Chemistry and Mathematics (2FF H11 - N301P/M)Chemistry and Physics (2FF H05 - N301P/M)	<ul style="list-style-type: none">Electronics and Mathematics (2FF H19 - N301M)Electronics and Physics (2FF H20 - N301M)Physics and Applied Mathematics (2FF H24 - N301P/M)Physics and Computer Science (2FF H25 - N301P/M)Physics and Mathematics (2FF H23 - N301P/M)Computer Science and Electronics (2FF H17 - N301M)Computer Science and Mathematics (2FF H09 - N301P/M/V)

STUDENT LIFE EXPERIENCE PROGRAMME - SPORTS DAY

09:00-17:00

09:00–10:00

Session Title: Blind Soccer Demonstration

Venue: Building A6, Great Hall

10:00–13:00

Inter-Faculty Goal Ball Tournament – Knock out Rounds

Venue: Building A6, Great Hall

Participating teams

First-year students are grouped per Faculty to participate in the Sport Day.

Faculty Code	Faculty Name	Faculty Code	Faculty Name
F-Edu	Faculty of Education	F-Law	Faculty of Law
F-EMS	Faculty of Economic and Management Sciences	F-NAS	Faculty of Natural and Agricultural Sciences
F-HS	Faculty of Health Sciences	F-Theo	Faculty of Theology
F-Hum	Faculty of Humanities		

09:00–10:00

Introduction to Campus Sports

- Introduction of staff members in the Sports Unit
- An opportunity to sign up to participate in Campus Sports Clubs
- Tour to different Campus Sports Facilities
- Meet the Soccer Kings

Venue: Soccer Institute Field

10:30–11:00

Aerobics Marathon

Venue: Soccer Institute Field

Time	Group	Faculty Code	Faculty Name
12:00-13:00	F-EMS VS F-NAS	Soccer	Soccer Institute Field A
	F-EDU vs F-HUM		Soccer Institute Field B
	F-EMS VS F-NAS	Netball	Netball Court A
	F-EDU vs F-HUM		Netball Court B
13:00-14:00	F-THEO vs F-HS	Soccer	Soccer Institute Field A
	F-LAW vs Mafika Team		Soccer Institute Field B
	F-THEO vs F-HS	Netball	Netball Court A
	F-LAW vs Mafika Team		Netball Court B

LUNCH
13:00-14:00

14:00–17:30

Inter-Faculty Goal Ball Tournament – Finals

Venue: Building A6, Great Hall

Time	Group	Sport Code	Venue
14:00-15:00	Winners vs Winners	Soccer	Soccer Institute Field A
	Losers vs Losers		Soccer Institute Field B
15:00-16:00	Winners vs Winners	Netball	Netball Court A
	Losers vs Losers		Netball Court B
17:00-18:00	Tournament Finals	Soccer	Soccer Institute Field A
	Tournament Finals	Netball	Netball Court A



Don't hesitate to get in touch with us and talk to one of our ambassadors.
We are ready to answer your questions!

Thoughts-and-complaints line: SMS

MAHIKENG CAMPUS: 34151

Fraud hotline / reporting email:

report-fraud@nwu.ac.za



Email:
studies@mynwu.ac.za



WhatsApp line:
[+27 \(0\)60 070 2606](tel:+270600702606)



Find us on our NWU Website:
studies.nwu.ac.za



SMS line:
34151

DINNER
17:30-19:00

STUDENT LIFE AND RESIDENCE LIFE EXPERIENCE PROGRAMME
19:00-21:00

19:00-20:30

Entertainment

Venue: Relevant Residence Rec Hall

20:30–21:00

Debriefing and Well-being Check-in with House Parent, House Committee and Peer Helper

PROGRAMME ENDS
21:00

****No Informal Residence Life Programmes.**

FRIDAY, 07 FEBRUARY 2024

BREAKFAST
06:30-07:45

FACULTY EXPERIENCE PROGRAMME
08:00-16:30

FACULTY OF EDUCATION		
Time	Activity	Venue
Venue allocation		
Foundation Phase Senior and FET Phase <i>**Students forming part of the groups indicate above remain in the indicated venue, with presenters rotating between venues.</i>		Building A1, Room G46 Building A1, Room G45
08:00-08:15	Welcoming by Deputy Dean	Venues indicated above
08:20-09:10	Importance of languages in teacher education	Venues indicated above
09:15-10:00	Beehive videos and practise	Building A1, Room G46
	Emergency 911 (Concessions and Psychosocial support)	Building A1, Room G45
10:00-10:20	COMFORT BREAK	
10:20-11:10	Emergency 911 (Concessions and Psychosocial support)	Building A1, Room G46
	Beehive videos and practise	Building A1, Room G45
11:10-11:45	Time Management (Timetables and Exam Timetables – Assessment plans on eFundi)	Building A1, Room G46
	Time Management (Timetables and Exam Timetables – Assessment plans on eFundi)	Building A1, Room G45
11:45-12:30	Student Life in the Faculty: Introduction of the Students' Academic Chapter (SAC)	Venues indicated above
14:00-14:30	10 Golden rules for teachers	Building A1, Room G46
	TPrac	Building A1, Room G45
14:35-15:05	TPrac	Building A1, Room G46
	10 Golden rules for teachers	Building A1, Room G45
15:10-15:40	Grievance procedure	Building A1, Room G46
	Grievance procedure	Building A1, Room G45
15:45-16:30	Orientation engagement with SAC	Venues indicated above

FACULTY OF ECONOMIC AND MANAGEMENT SCIENCES		
Time	Activity	Venue
CHARTERED AND FORENSIC ACCOUNTANCY		
08:15-08:30	Opening and Welcome	Building A5, Room G07
08:30-08:45	Introduction of School of Accounting Sciences Staff Members	
08:45-09:30	CA Program Presentation and Q&A: Chartered Accountancy	
09:30-10:15	FA Program Presentation and Q&A: Financial Accountancy	
10:15-10:30	Comfort break	
10:30-11:00	Academic Matters	Building A5, Room G07
11:00-11:30	Academic Integrity	
11:30-12:00	Introduction to F-EMS Students' Academic Chapter	
12:00-13:00	Interactive Activities and Prize Giving: Academic Trainees	
CHARTERED- AND FINANCIAL ACCOUNTANCY FOR NON-ACCOUNTANCY PROGRAMMES		
13:00-13:15	Opening and Welcome	Building A5, Room G07
13:15-13:30	Introduction of SAS Staff Members	
13:30-14:00	Information about ACCS 111 / ACFS111	
14:00-14:15	Comfort break	
14:15-14:45	Time Management and Personal Experiences	Building A5, Room G07
14:45-15:15	Academic Services and Support Systems at NWU: Students' Academic Chapter	
15:15-16:00	Interactive Activities and Prize Giving: Academic Trainees	
SCHOOL OF ECONOMIC SCIENCES		
08:00-08:15	Opening and Welcome	Building A10, Room G02
08:30-08:45	Ice breaker	
08:45-09:00	Programme leaders: Stats and Information	
09:45-09:15	Meet the Student Academic Chapter (SAC – EMS)	
09:15-09:30	Programme leaders TECM, LMNM and ECON	
09:30-09:45	Comfort break	
09:45-10:30	The world of entrepreneurship (bhive EDC)	Building A10, Room G02
10:30-11:00	Q&A session	
11:00-12:00	Academic Integrity	
12:00-13:00	Recreational Activity	
SCHOOL OF MANAGEMENT SCIENCES		
08:15-08:30	Opening and Welcome	Building A5, Room 106
08:30-09:00	Breakfast Show	
09:00-09:15	Overview of NWU, Faculty and School	
09:15-09:30	Introduction to Programme and Faculty Staff	
09:30-09:45	The world of entrepreneurship (bhive EDC)	
09:45-10:00	Meet the F-EMS Students' Academic Chapter	
10:00-10:15	Rally Teams	
10:15-12:15	Rally	
12:15-13:00	Prize Giving	
SCHOOL OF INDUSTRIAL PSYCHOLOGY AND HUMAN RESOURCE MANAGEMENT		
08:15-08:30	Opening and Welcome	Building A10, Room G01
08:30-09:15	Overview of the School	
09:15-10:00	Outlining of Programme Differences	
10:00-10:15	Comfort break	
10:15-10:30	The world of entrepreneurship (bhive EDC)	Building A10, Room G01
10:30-10:45	Meet the Student Academic Chapter (SAC – EMS)	
10:45-11:30	Path to Postgraduate Studies	
11:30-11:50	Q&A Session	
12:50-13:00	Closing	

FACULTY OF ECONOMIC AND MANAGEMENT SCIENCES		
Time	Activity	Venue
SCHOOL OF TOURISM MANAGEMENT		
Time	Activity	Venue
09:00-09:10	Opening and Welcome	Building A5, Room G05
09:15-09:30	R&O Programme Outline	
09:30-10:00	eFundi Introduction	
10:00-10:15	University Life	
10:15-10:30	Meet the Student Academic Chapter (SAC – EMS)	
10:30-10:45	The world of entrepreneurship (bhive EDC)	
10:45-11:15	Industry Guest Speaker	
11:15-12:00	Competition: Facts about South Africa (Tourism specific)	
12:00-13:00	Tour of the School Facility	

FACULTY OF HEALTH SCIENCES		
TIME	DESCRIPTION	VENUE
Faculty of Health Science students are allocated to the following venues for orientation purposes:		
Human Movement Sciences		Building A5, Room 103
Nursing		Building A13, Room G42
Social Work		Building A5, Room G104
Psychology		Building A5, Rooms G107
08:30-09:00	Faculty Welcoming and Introductory Session	Venues indicated above
09:00-12:00	Faculty Welcoming and Information Session <ul style="list-style-type: none"> • Faculty Specific Terminology • Academic & University Terminology • Programme Outlay • Module outcomes, names and abbreviations • Academic Rules • Timetables, assessments and schedules • Tour your classrooms and laboratories 	
12:00-13:00	Introduction to Faculty of Health Sciences Students' Academic Chapter	Venues indicated above
14:00-16:00	Student Administration Assistance <i>**Students who have registration questions or queries have an opportunity to meet with the respective Programme Leaders. Contact the Academic Advisor.</i>	https://health-sciences.nwu.ac.za/academic-advisors OR Psychology: Building A17 Social Work: Building A17 Human Movement Science: Building A17 Nursing: Building A13

FACULTY OF HUMANITIES		
Time	Activity	Venue
08:00-08:30	Welcoming message from Deputy Dean: Teaching and Learning	Building A8, G04
08:30-09:00	Introduction to the Faculty Humanities: Deputy School Directors	
09:00-09:30	Introduction to the Faculty of Humanities Students' Academic Chapter	
10:00-10:30	Get to Know your Faculty and Student Academic Lifecycle Administration	
10:30-10:45	Comfort Beak	
<i>**Students divide into relevant Faculty School Groups</i>		
10:45-13:00	Introduction to Faculty School, Programmes, Lecturers and Processes	
	School of Government Studies	Building A9, G02
	School of Communication	Building A9, G01
	School of Languages	Building A5, 101
	School of Philosophy	Building A1, G48
	School of Social Sciences	Building A8, G04

FACULTY OF LAW		
TIME	DESCRIPTION	VENUE
08:00-08:30	Introduction to Faculty Management Committee and First-year Module Lecturers	Building A5, Rooms G03, G08, G09
08:30-10:00	Curriculum Information Session	
10:00-11:15	Academic Orientation Sessions and Processes: Deputy Director Undergraduate Studies	
11:15-11:30	Comfort break	
11:30-13:00	Academic Ethics and Integrity within the Faculty Context	Building A5, Rooms G03, G08, G09
14:00-15:30	Faculty Mentoring and Tutoring Programme for First-year Students	
15:30-16:30	Introduction to F-LAW Students' Academic Chapter	

FACULTY OF NATURAL AND AGRICULTURAL SCIENCES		
TIME	DESCRIPTION	VENUE
08:00-08:15	Arrival of students and venue allocation	Building A5, Room G06 Building A10, Room G03
08:15-08:30	Welcoming message from Executive Dean and senior staff	
08:30-09:30	Introduction to the Faculty Processes and Important Information	
09:30-09:45	Comfort break	
09:45-13:00	Introduction and engagements with F-NAS Students' Academic Chapter	Building A5, Room G06 Building A10, Room G0
14:00-16:00	Registration Amendment Assistance <i>**Students who have registration questions or queries have an opportunity to meet with the respective Programme Leaders. Contact the Academic Advisor.</i>	Building A4, first-floor

FACULTY OF THEOLOGY		
TIME	DESCRIPTION	VENUE
08:30-09:00	Faculty Welcoming and Introduction	Building A1, Room G41
09:00-09:30	Introduction to Theology Qualifications, Career and Academic Opportunities	
09:30-10:15	Academic Orientation on Computers and Computer Programmes	
10:15-11:00	Academic Writing Style, Study Methods, Faculty Specific Terminology	
11:00-11:30	Curriculum Amendments	
11:30-12:15	Library Introduction	
12:15-13:00	Guided campus tour for Faculty students	
14:00-16:30	Introduction to F-THEO Students' Academic Chapter	Building A1, Room G41

STUDENT LIFE EXPERIENCE PROGRAMME

14:00-17:00

14:00–15:30

Sip & Paint Session 1

Theme: LGBTQI Rights #SafeSpace

Venue: The Stone Park

15:30–17:00

Sip & Paint Session 2

Theme: Anti substance abuse & use

Venue: The Stone Park

DINNER
18:00-19:30



It's more than a greeting!

The #NWUEagles see language as a bridge instead of a barrier. We like talking to one another and use different languages to understand each other. Along the way, we broaden our horizons and make each other feel a little more welcome.

It all starts here® ... with a hello!



STUDENT LIFE AND RESIDENCE LIFE EXPERIENCE PROGRAMME
19:00-21:00

19:00–20:30

Human Rights and Diversity

Venue: Relevant University Residence Recreational Hall

20:30–21:00

Debriefing and Well-being Check-in with House Parent, House Committee and Peer Helper

PROGRAMME ENDS
21:00

21:00–21:30

Informal Residence Life Programme

CAMPUS WELCOMING DAY

SATURDAY, 08 FEBRUARY 2024

CAMPUS WELCOMING EVENT FOR FIRST-YEAR STUDENTS
10:00-12:00

Venue: Building A6, Great Hall

Programme Event	Presenter
Welcoming and Introduction	Ms Masego Diale
Message from Students' Campus Council Chairperson	Mr Obakeng Sefodi
<i>Entertainment</i>	Poetry
Message from Students' Representative Council President (virtual)	Mr Kamohelo Zwane
Message from Campus Director: Student Life	Mr Jim Molautsi
Message from Executive Director: Student Life (virtual)	Prof Sibusiso Chalufu
<i>Entertainment</i>	First-years' Musical Groups
Message from Deputy-Vice Chancellor of the Mahikeng Campus	Prof Sonia Swanepoel
Message from Vice-Chancellor and Principal(virtual)	Prof Bismark Tyobeka
<i>University Anthem</i>	Mafika Harmonies

STUDENT LIFE AND RESIDENCE LIFE EXPERIENCE PROGRAMME
12:00-21:00

15:00–22:00

First Years Got Talent (spoken word, music, drama)

Venue: Building A6, Great Hall

20:30–21:00

Debriefing and Well-being Check-in with House Parent, House Committee and Peer Helper

ORIENTATION PROGRAMME CONCLUDES
21:00

INFORMAL ORIENTATION AND CO-CURRICULAR PROGRAMME

10-15 February 2025

**Informed by the progress made with regards to First-year Student registration and arrival at campus, an Informal Orientation and Co-Curricular programme will be presented to First-year students from 10-15 February 2025. The programme will be developed and approved by the relevant Campus Director: Student Life, within the following framework:

Description	Time	Date
Informal Orientation and Co-Curricular Programme <ul style="list-style-type: none">• University Residences and Day Houses• Private Students (where relevant)	19:00-22:00	10 February 2025
		11 February 2025
		12 February 2025
		13 February 2025
	19:00-00:00	14 February 2025
-	15 February 2025	

More information on the Informal Orientation and Co-Curricular Programme will be communicated directly to First-year Students.

Got a question? Get in touch!



0860 169698 (0860 1mynwu) - Toll free



studies@nwu.ac.za



+27 (0) 60 070 2606



34151

Join our online NWU Family!



NWU - North-West University



North-West University



North-West University



theNWU



@theNWU



NWU - North-West University

