

# DISCOVER NEW FRONTIERS



# 2025

**ORIENTATION PROGRAMME**  
**POTCHEFSTROOM CAMPUS**



# DOWNLOAD THE #MYNWU APP

For everything you need to know about  
**Registration & Orientation**



## Features

-  NEWS UPDATES
-  ORIENTATION CALENDAR
-  PUSH NOTIFICATIONS
-  STUDENT EVENTS

Available to download on:



# TABLE OF CONTENTS



<b>WELCOME TO THE NORTH-WEST UNIVERSITY</b>	<b><u>PAGE 4</u></b>
<b>NWU OFFICE BEARERS</b>	<b><u>PAGE 5</u></b>
<b>NWU STUDENT LEADERSHIP STRUCTURES</b>	<b><u>PAGE 6</u></b>
<b>WELCOME LETTERS</b>	<b><u>PAGE 8</u></b>
<b>NWU STUDENT ACCESS CARD</b>	<b><u>PAGE 11</u></b>
<b>NWU, POTCHEFSTROOM CAMPUS MAP</b>	<b><u>PAGE 12</u></b>
<b>REGISTRATION PERIOD FOR FIRST-YEAR STUDENT</b>	<b><u>PAGE 15</u></b>

## DATES

<b>SATURDAY, 01 FEBRUARY 2025</b>	<b><u>PAGE 15</u></b>
<b>SUNDAY, 02 FEBRUARY 2025</b>	<b><u>PAGE 17</u></b>
<b>MONDAY, 03 FEBRUARY 2025</b>	<b><u>PAGE 18</u></b>
<b>TUESDAY, 04 FEBRUARY 2025</b>	<b><u>PAGE 21</u></b>
<b>WEDNESDAY, 05 FEBRUARY 2025</b>	<b><u>PAGE 23</u></b>
<b>THURSDAY, 06 FEBRUARY 2025</b>	<b><u>PAGE 26</u></b>
<b>FRIDAY, 07 FEBRUARY 2025</b>	<b><u>PAGE 30</u></b>
<b>SATURDAY, 08 FEBRUARY 2025</b>	<b><u>PAGE 35</u></b>

# North-West University

## Bragging rights



### Top 7 University

NWU ranks among the top seven South African universities in the 2024 Academic Ranking of World Universities (ARWU).



### Top 4.2% world's best universities

The Center for World University Rankings (CWUR) places NWU in the top 4.2% of the world's best universities.



### Top 8 universities in Africa

NWU is also recognized as one of the top eight universities in Africa for environmental sustainability.

Find out more: <https://www.nwu.ac.za/rankings>

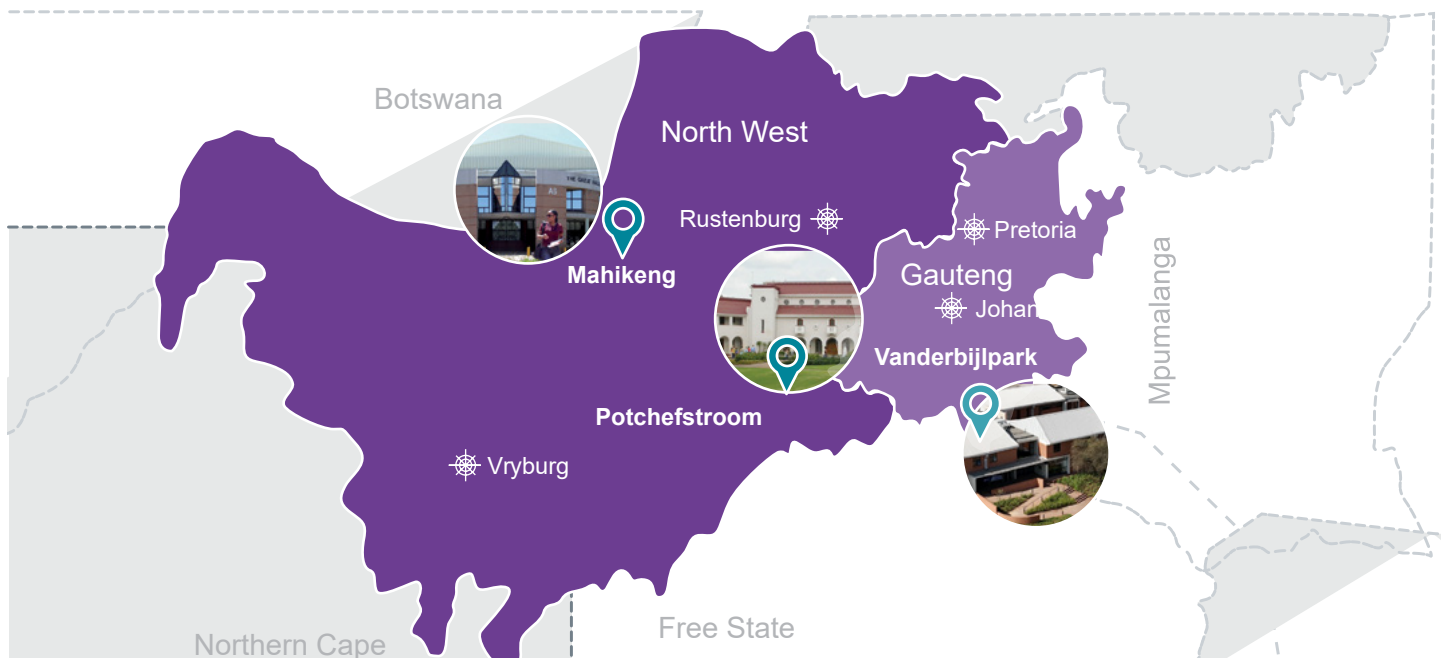
**Discover new frontiers at North-West University (NWU) – one of Africa's top universities!**  
NWU offers a world-class education to an international student body from over 65 countries.

## What can NWU offer you?

- Affordable, quality higher education.
- A safe and inclusive teaching and learning environment.
- High rating of employability as a result of our co-curricular offerings.
- Quality expertise with nationally and internationally-rated academics and world-class research facilities.
- Strong co-curricular and vibrant student life.
- Thriving sport – NWU boasts a great sports culture, with successes that have seen us ranked as champions in successive years.

## What sets us apart

Our core activities, teaching and learning and research, are intertwined with community engagement and innovation in our eight faculties, most of which serve both distance and contact students.





# OFFICE BEARERS

## University Management



**Dr Anna Mokgokong**  
Chancellor



**Prof Bismark Tyobeka**  
Principal and Vice-Chancellor



**Prof Linda du Plessis**  
Deputy Vice-Chancellor:  
Teaching and Learning | Vice-Principal



**Prof Marlene Verhoef**  
Registrar



**Prof Sonia Swanepoel**  
Deputy Vice-Chancellor:  
Community Engagement and  
Mahikeng Campus Operations



**Prof Daryl Baia**  
Deputy Vice-Chancellor:  
Information Technology and  
Potchefstroom Campus Operations



**Prof Jeffrey Mphahlele**  
Deputy Vice-Chancellor:  
Research and Innovation



**Prof Sibusiso Chalufu**  
Acting Deputy Vice-Chancellor  
(Vanderbijlpark Campus)  
Executive Director: Student Life



**Mr Clement Manoko**  
Executive Director:  
Corporate Relations and Marketing



**Mrs Elmarie de Beer**  
Executive Director:  
Finance and Facilities



**Mr Milton Nyamadzawo**  
Acting Executive Director:  
People and Culture

## Executive Deans



**Prof Babs Surujal**  
Executive Dean: Faculty of  
Economic and  
Management Sciences



**Prof Lloyd Conley**  
Executive Dean:  
Faculty of Education



**Prof Liezi van Dyk**  
Executive Dean:  
Faculty of Engineering



**Prof Awie Kotzé**  
Executive Dean: Faculty  
of Health Sciences



**Prof Dumi Moyo**  
Executive Dean:  
Faculty of Humanities



**Prof Neo Morei**  
Executive Dean:  
Faculty of Law



**Prof David Modise**  
Executive Dean: Faculty of Natural and  
Agricultural Sciences



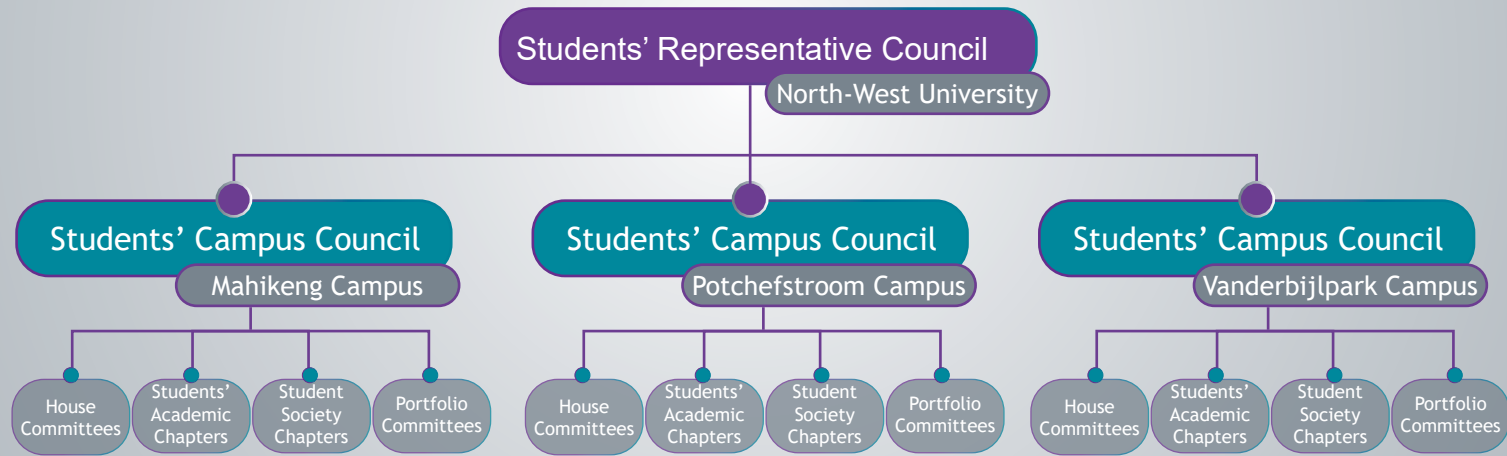
**Prof Hennie Goede**  
Executive Dean:  
Faculty of Theology





NWU

Student Leadership Structures



NORTH-WEST UNIVERSITY  
Students' Representative Council 2024/25



**Kamohelo Zwane**  
SRC: President



**Reuben Coetzer**  
SRC: Deputy-President



**Obakeng Sefodi**  
SRC: Secretary-General



**Dean Dube**  
SRC: Transformation and Diversity  
Officer with Current Affairs



**Katlego Mmokwa**  
SRC: Distance Students'  
Officer



**Celimpilo Manqele**  
SRC: Academic Officer



**Khethiwe Nhlapo**  
SRC: Arts and Culture Officer



**Musa Bizani**  
SRC: Community and Stakeholder  
Engagement Officer



**Nomsa Hlongwane**  
SRC: Fundraising and  
Projects Officer



**Kgopotso Segobela**  
SRC: Legal Officer



**Masego Maboye**  
SRC: Marketing and Public  
Relations Officer



**Rebecca Mantso**  
SRC: Residence Officer  
(Acting)



**Tshepiso Tau**  
SRC: Sport Officer



**Thabang Mnculwane**  
SRC: Societies Liaison and  
International Students' Officer



**Poppy Machete**  
SRC: Treasurer-General



**Reuben Coetzer**  
SCC: Chairperson



**Khethiwe Nhlapo**  
SCC: Secretary



**Musa Bizani**  
SCC: Transformation and Diversity  
Officer with Current Affairs



**Rebecca Mantso**  
SCC: Academic Officer



**Eugene Van der Merwe**  
SCC: Arts and Culture Officer



**Lethabo Maseko**  
SCC: Community and  
Stakeholder Engagement Officer



**Reabetswe Hlhasoane**  
SCC: Fundraising and RAG  
Officer



**Thabang Mnculwane**  
SCC: Legal Officer



**Funanani Kharivhe**  
SCC: Marketing and  
Public Relations Officer



**Masego Maboje**  
SCC: Residence Officer



**Tshepiso Tau**  
SCC: Students' Interest and  
Development Officer



**Selaelo Phosa**  
SCC: Sport Officer



**Anne Venter**  
SCC: Societies Liaison and  
International Students' Officer



**Pieter De La Rey**  
SCC: Treasurer

### List of abbreviations

- SRC:** Students' Representative Council
- SCC:** Students' Campus Council
- HC:** House Committee
- SAC:** Students' Academic Chapter
- PC:** Portfolio Committee

### Quick facts on student leadership structures

- The SRC comprised of 15 members representative of each campus.
- The SRC is the highest ranking student leadership structure at the NWU.
- An SCC of 15 members is annually elected for each Campus, with the SCCs being accountable to the SRC.
- House Committees are annually elected for each university residence and day house, per campus.
- Students' Academic Chapters are annually elected for each Faculty, per campus.
- Portfolio Committees assist the SCCs in coordinating Student Life activities.
- Student Society Chapters are annually established for a variety of interest groups including arts and culture, religion, social rights, etc.

*Message from*

**PROF BISMARCK TYOBEKA**

**PRINCIPAL AND VICE-CHANCELLOR**



**Dear First-Year Students of 2025**

A warm and heartfelt welcome to the North-West University (NWU)! Congratulations on making a life-changing decision to join our vibrant and diverse community. This is the beginning of an extraordinary academic journey, one that will challenge, inspire, and transform you.

As you embark on this new chapter, NWU becomes your home away from home. Here, you will not only receive a world-class education but also gain access to countless opportunities to grow personally and professionally. Our commitment to academic excellence, research innovation, community engagement, and a dynamic Student Life ensures that your time with us will be both enriching and rewarding.

I encourage you to approach the Orientation Programme with enthusiasm and an open mind. This essential phase is designed to help you navigate university life, build meaningful connections, and discover the resources and support systems available to help you thrive. From academic assistance to mental health services and co-curricular activities, we are here to support your success every step of the way.

At the NWU, diversity and inclusion are the cornerstones of our values. Our vibrant campus environment celebrates the richness of different cultures, perspectives, and ideas. Embrace these opportunities to engage with people from all walks of life and prepare yourself for an interconnected, multicultural world. We are unwavering in our commitment to creating a safe, respectful, and inclusive community. Bullying, harassment, racism, and gender-based violence will be met with zero tolerance at NWU, as we remain committed to actively promoting a culture of respect, inclusion, and collaboration.

Your safety and well-being are our priorities, and we continue to enhance measures to ensure that our campuses remain safe and welcoming spaces for all. Remember, you are not alone on this journey. Your peers, lecturers, and support staff are here to guide and encourage you.

As you take your first steps, be inspired by the countless successful graduates who once stood where you are today. Many of them forged lifelong friendships, discovered their passions, and achieved their dreams during their time at the NWU. Now it is your turn to seize the opportunities before you - dive into your studies, participate in student activities, and embrace the adventures that come with university life.

Believe in yourself, cherish the values instilled by your loved ones, and trust in your potential to make a difference. The journey ahead is yours to shape - dream big, work hard, and make your mark.

*Welcome to the NWU family! Your story begins here.*





*Message from*

**PROF DARYL BALIA**

DEPUTY VICE-CHANCELLOR:  
INFORMATION TECHNOLOGY AND  
POTCHEFSTROOM CAMPUS OPERATIONS

**Dear First-year Student**

I am writing this personal message for YOU with a feeling of great expectation and anticipation to introduce you to the Potchefstroom Campus of the North-West University...it all starts here!

Not only am I excited about YOUR decision to come to North-West University (NWU), but also because YOU have chosen the Potchefstroom Campus of NWU to begin the next important phase of your life's journey. Our beautiful campus is the key for you to Discover New Frontiers.

Let me therefore extend a warm welcome to you as a new NWU student in 2025. You are standing on the verge of a completely new and exciting phase in your life during which further moulding, and development will take place. While you are here, become equipped with the necessary knowledge and skills to pursue a career and practise a profession. Thus, an exciting time indeed awaits you here!

The University's Orientation Programme will be an important source of information for you. Become involved and participate fully. This will help you to quickly become a fully-fledged and successful member of our NWU family. In the days ahead, you will be fully introduced to all facets of being a student at North-West University and get to know our special student identity ("Studentity" as we call it).

The Potchefstroom Campus is known for its academic excellence and vibrant student and campus life. It offers a range of programs and opportunities for personal and professional growth. We would like to support and assist you in this regard by building a firm foundation through high-quality teaching and learning, student life experiences as well as a wide variety of developmental opportunities that are based firmly on our core values. The NWU looks forward to helping you shape your plans for a brighter future!

At the NWU, all students are regarded as young adults who are responsible for shaping their own futures. It is important to be motivated and driven to achieve success. The University encourages students to take ownership of their education, make informed decisions, and actively engage in their academic and personal development. By embracing this mindset, students can maximize their potential and make the most of the opportunities provided by NWU to achieve their goals and create a successful future.

*I wish you the best as you embark on this important chapter of your life at the Potchefstroom Campus of the NWU.*



*Message from*

**PROF SIBUSISO CHALUFU**

EXECUTIVE DIRECTOR: STUDENT LIFE

**Dear First-year Student**

On behalf of NWU Student Life, I would like to welcome you, our First-year Students, and congratulate you on completing your high school education. Through achieving this milestone, you have already displayed great perseverance and dedication towards achieving your full potential – something that will come handy as you continue to discover your bright future ahead.

As Student Life we strive to enable your holistic development by ensuring that you become a well-rounded, innovative, and socially responsible citizen of the world. The NWU is committed to providing a diverse, safe and valuable student experience through a rich variety of co-curricular programmes and activities including arts and culture, sports, student leadership, residence life, student media, health and psycho-social support.

The 2025 Orientation Programme has been planned to assist you in seamlessly joining the NWU community whilst enjoying our vibrant Student Life. It is important that you participate in this programme to ensure that you acquire the necessary skills and information needed to commence with your academic programme, access support services, and embrace co-curricular opportunities and residence life experiences. Acquiring these skills will enable you to navigate your first few months at the NWU with ease, and thereafter successfully complete your academic journey towards graduation!

From today onwards you are part of the NWU community of staff and students who are here to support and guide you every step of the way. I implore you to explore, use and enjoy the wealth of opportunities available to you, remembering that exciting new horizons lie ahead.

I further encourage you to continue to persevere and rise above your circumstances, thereby ensuring that your goals and dreams are realised. Remain confident and know that with our support and encouragement YOU WILL ACHIEVE SUCCESS.

I wish you everything of the best during your time at the NWU – embrace every moment and remember:

**"It all starts here®."**



*Message from*  
**KAMOHELO ZWANE**

**SRC PRESIDENT**

**Dear First-year Student**

Congratulations on your admission to the North-West University! On behalf of the Students' Representative Council (SRC) I would like to extend a warm welcome to the North-west University (NWU), congratulations for taking this step towards shaping your future.

As you all begin this journey, I want to assure you that you made an excellent choice in choosing the NWU. The university has a vibrant community, dedicated to academic excellence, transformation and student development. From this point onwards, your campus is known as a home-away-from-home for all students, including our international students.

As the SRC: President, I encourage you to step outside of your comfort zone and explore the various opportunities that Student Life has to offer. Here you will discover many opportunities to participate in the co-curricular activities and our vibrant student life.

The next chapter of your life is the most exciting, and I don't want you to miss out on anything that the NWU has to offer. I highly recommend that you participate in numerous co-curricular activities including sports, arts and culture, student leadership, social engagements, and more. We strive to create an environment where you all will feel valued, supported, and empowered to reach your full potential and soar.

It is important to know that you are not alone as you begin your journey at the NWU. Although you will face challenges during this time, you should not be discouraged because we will be there for you every step of the way. The SRC, student leaders, staff and fellow students are all working together to ensure that you have a memorable and exciting university experience. Please do not hesitate to contact us should you require assistance.

I challenge you to start making a difference here at North-West University and when it's your time to leave, may you leave a better institution than you found it.

*"It all starts here®."*



*Message from*  
**REUBEN COETZER**

**SCC CHAIRPERSON**

**Dear First-year Student**

A sincere and heartfelt welcome to this new and exciting chapter of your life.

Congratulations on being accepted at the North-West University! For many of you this might be a daunting time. You might be the first one in your family to take this giant leap in advancing your education on a tertiary level or you may be the last one in a long generational line of NWU students. But regardless of who you are or where you come from, I want to assure you that the NWU will soon be the place you call your "home away from home". The NWU is a community where we as students take care of each other and where you will have boundless opportunities to excel and reach for your dreams.

My message to you as you start this new chapter in your life is to dream big, be bold and don't be afraid to step outside your comfort zone. Embrace your uniqueness and the opportunities to learn and share your knowledge. You are never too young to change the world, our university or your community. As George Bernard Shaw once said: "Some men see things as they are and say why, I dream of things that never were and say why not." Ask why not, dare to dream and dare to be different and aim to leave a lasting imprint on those around you.

Remember that those around you might not necessarily remember what you have achieved, but they will certainly remember how you made them feel, that you made them laugh and that you cared. The greatest gift of the NWU is not limited to academic excellence, or participation in sport or arts, but also the people that have crossed your path. Allow yourself to make new friends, building new communities and relationships, ultimately cherishing the people around you as they are truly the people that will make your journey worthwhile.

The NWU has the greatest offering of Student Life anywhere in the world. Enjoy all that the university has to offer in terms of academics, sports, arts, social life and community engagement. The next few years are set to be the best time of your life - allow yourself to become the best version of yourself and make lifelong friends and lasting memories.

I wish you all the best on your future endeavours. The Students' Campus Council will be with you all the way to empower you to embrace this new chapter of your life, ensuring that you enjoy the ultimate university experience.

*May you truly soar like an NWU Eagle!*

# NWU STUDENT ACCESS CARD

## What is it?

Identity confirmation card declaring you as a student of the NWU.

**Collect your Student Access Card from:**  
Building A17

**First Student Access card: Free**  
**Replacement: R80.00**



## What is it used for?

Your student card provides access to the NWU Campus, including:

- Main gates
- Turnstiles
- General access to buildings
- University residences (only registered residents of the university residence)
- Taking attendance in the class and examination rooms

## Did you know?







Your student number is automatically generated when you apply at the North-West University. Consecutive numbers differ with a number of 8, e.g. 12345686 will be the follow-up of 12345678. The last two numbers are of such a nature that no two students will have the same first six numbers, e.g. if a number is 12345671 there cannot be a student number 12345679.

[Watch here](#)




# CAMPUS MAP / KAMPUSKAART

#MyNWU

 NWU-Pukke  
 @theNWU  
 NWUtv  
 0860 1mynwu  
 studies.nwu.ac.za  
 studies@mynwu.info

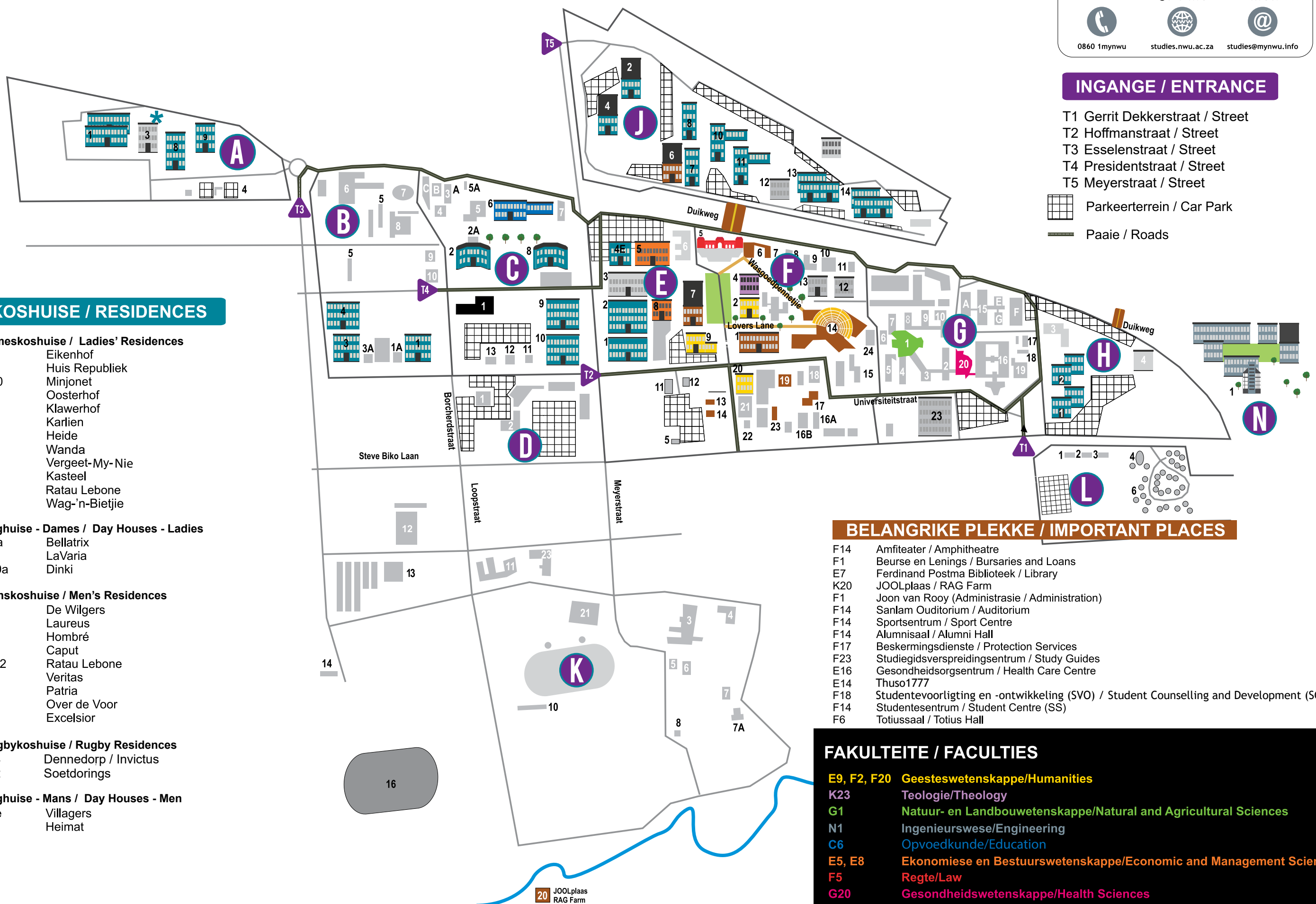
**INGANGE / ENTRANCE**

T1 Gerrit Dekkerstraat / Street  
 T2 Hoffmanstraat / Street  
 T3 Esselenstraat / Street  
 T4 Presidentstraat / Street  
 T5 Meyerstraat / Street

 Parkeerterrein / Car Park  
 Paaie / Roads

**KOSHUISE / RESIDENCES**

- Dameskoshuise / Ladies' Residences**
- B4 Eikenhof
  - C9 Huis Republiek
  - C10 Minjonet
  - E1 Oosterhof
  - E2 Klawerhof
  - J7 Karlien
  - J8 Heide
  - J14 Wanda
  - J11 Vergeet-My-Nie
  - J13 Kasteel
  - A3 Ratau Lebone
  - J10 Wag-'n-Bietjie
- Daghuise - Dames / Day Houses - Ladies**
- C5a Bellatrix
  - B6 LaVaria
  - F10a Dinki
- Manskoshuise / Men's Residences**
- A1 De Wilgers
  - A8 Laureus
  - B1 Hombré
  - B3 Caput
  - C8/2 Ratau Lebone
  - H1 Veritas
  - H2 Patria
  - J2 Over de Voor
  - J4 Excelsior
- Rugbykoshuise / Rugby Residences**
- K13 Denedorp / Invictus
  - K12 Soetdorings
- Daghuise - Mans / Day Houses - Men**
- E4e Villagers
  - F9 Heimat



**BELANGRIKE PLEKKE / IMPORTANT PLACES**

- F14 Amfiteater / Amphitheatre
- F1 Beurse en Lenings / Bursaries and Loans
- E7 Ferdinand Postma Biblioteek / Library
- K20 JOOLplaas / RAG Farm
- F1 Joon van Rooy (Administrasie / Administration)
- F14 Sanlam Ouditorium / Auditorium
- F14 Sportsentrum / Sport Centre
- F14 Alumnisaal / Alumni Hall
- F17 Beskermingsdienste / Protection Services
- F23 Studiegidsverspreidingsentrum / Study Guides
- E16 Gesondheidsorgsentrum / Health Care Centre
- E14 Thuso1777
- F18 Studentevoorligting en -ontwikkeling (SVO) / Student Counselling and Development (SCD)
- F14 Studentesentrum / Student Centre (SS)
- F6 Totiussaai / Totius Hall

**FAKULTEITE / FACULTIES**

- E9, F2, F20 Geesteswetenskappe/Humanities**
- K23 Teologie/Theology**
- G1 Natuur- en Landbouwetenskappe/Natural and Agricultural Sciences**
- N1 Ingenieurswese/Engineering**
- C6 Opvoedkunde/Education**
- E5, E8 Ekonomiese en Bestuurswetenskappe/Economic and Management Sciences**
- F5 Regte/Law**
- G20 Gesondheidswetenskappe/Health Sciences**

# POTCHEFSTROOM CAMPUS

## ORIENTATION PROGRAMME

### ARRIVAL OF FIRST-YEAR STUDENTS ON CAMPUSES

30 JANUARY - 01 FEBRUARY 2025

#### ARRIVAL AND MOVING INTO UNIVERSITY RESIDENCES

08:00 - 17:00

All **Residence Life Experience** activities will take place at the specified venues listed below.

Students who reside in a University Residence will receive their **student access card** at the University Residence during the Orientation period as communicated by the relevant House Parent and House Committee members.

For further details or enquiries regarding student access cards and parking discs, please visit Campus Protection Services at Building F17 on Campus or contact 018 299 2209.

Ladies' University Residences			Men's University Residences		
Residence	Venue	Contact Person	Residence	Venue	Contact Person
Eikenhof	B4	Ms Prudence Sepeng 018 299 2834/1305	Caput	B3	Mr Rethabile Dube 018 299 2005
Heide	J8	Ms Andiswa Msi 018 299 4625	De Wilgers	A1	Dr Myrone Stoffels 018 299 1685/1262
Huis Republiek	C9	Mrs Christina Parsons 018 285 2099	Excelsior	J4	Mr Etienne Mostert 018 299 4501/1184
Kasteel	J13	Mr Nkosinathi Tom 018 285 3002/299 1146	Hombré	B1	Mr Greg Roberts 018 299 1115/4415
Karliën	J7	Prof Michelle Barnard 018 299 1033/1166	Laureus	A8	Mr LeRoux Malan 018 285 2410/299 2852
Klawerhof	E2	Prof Michael Temane 018 299 4557/1264	Over de Voor	J2	Mr Philip Malan 018 299 4564
Minjonet	C10	Dr Lerato Mdaka 018 299 4168	Patria	H2	Prof Johan Botha 018 285 2265/299 1140
Oosterhof	E1	Ms Nthabiseng Leokaoko 018 299 1662/1190	Ratau Lebone	A3	Mr Odirile Mosiane 018 299 2738
Vergeet-My-Nie	J11	Mr Vincent Eastes 018 299 2600/1152	Veritas	H1	Mr Leslie Barends 018 299 4845
Wag-'n-Bietjie	A2	Adv Rene Koraan 018 299 4287/1156	Dennedorp	K13	Mr Funani Mabala 018 299 2919
Wanda	J14	Mrs Martine Vorster 018 299 2254	Soetdorings	K12	Mr Funani Mabala 018 299 2919
			Invictus	K13	Mr Funani Mabala 018 299 2919

## 30 JANUARY - 01 FEBRUARY 2025

### REGISTRATION TO DAY HOUSES

08:00 - 17:00

\*\*First-year students who do **not reside in University Residences** are invited to **register** with a **Day House** to ensure that they can experience the vibrant Student Life offering at the North-West University.

**Registration stalls** will be available **on campus** where students who have not yet registered with a Day House can do so.

Residence	Stall days	Venue
Bellatrix	31 January (11:00-15:00) 1 February (08:00-12:00)	Lover's Lane and Bellatrix Office (Building F14)
Dinki	31 January (08:00-16:00) 1 February (08:00-13:00)	Wasgoedpennetjelaan and Totius Hall (Building F6)
LaVaria	30 January (08:00-17:00) 31 January (08:00-17:00) 1 February (08:00-17:00)	Lover's Lane and LaVaria Office (Building F14)
Heimat	30 January (08:00-15:00) 31 January (08:00-15:00) 1 February (08:00-15:00)	Lover's Lane and Heimat Office (Building F14)
Villagers	31 January (10:00-16:00) 1 February (08:00-11:30)	Lover's Lane and Villagers office (Building F14)

More information on the various Day Houses can be found on the websites below. All Residence Life activities will take place at the specified venues listed below for each Day House.

Students who form part of Day Houses will receive their **student access card** at the relevant venue during the Orientation Period as communicated by the relevant House Parent and House Committee members.

For further details or enquiries regarding student cards and parking discs, please visit Protection Services at Building F17 on campus, or contact 018 299 2209.

Day House	Website	Venue	Contact Person
Bellatrix	<a href="http://studies.nwu.ac.za/bellatrix">http://studies.nwu.ac.za/bellatrix</a>	Building J6 (Weet & Sweet Hall)	Ms Juan-Ri Potgieter 018 285 2568
Dinki	<a href="http://studies.nwu.ac.za/dinki">http://studies.nwu.ac.za/dinki</a>	Building F6 (Totius Hall)	Mrs Christi Cloete 018 285 2763
LaVaria	<a href="http://studies.nwu.ac.za/lavaria">http://studies.nwu.ac.za/lavaria</a>	Building H4 (D'Vine Venue)	Prof Daryl Balia 018 299 2601
Heimat	<a href="http://studies.nwu.ac.za/HEIMAT">http://studies.nwu.ac.za/HEIMAT</a>	Building E1 (Oosterhof Dining Hall)	Prof Risimati Hobyane 018 299 1531
Villagers	<a href="http://studies.nwu.ac.za/villagers">http://studies.nwu.ac.za/villagers</a>	Building F14 (Alumni Hall)	Dr Bertus le Roux 018 299 1744

## SATURDAY, 01 FEBRUARY 2025

### WELCOMING EVENTS AT UNIVERSITY RESIDENCES AND DAY HOUSES FOR FIRST-YEAR STUDENTS, PARENTS, GUARDIANS, ETC.

12:00-13:00

#### Welcoming Events

**Venue:** refer to venues indicated above

**\*\*A welcoming event for all parents and students who reside in University Residences or form part of a Day House will be held at the above indicated venues. Parents and students are encouraged to attend these events, where they will be introduced to the House Parent and House Committee and receive more information on the programme and year ahead.**



## CONTACT INFORMATION FOR PRIVATE STUDENTS

**\*\*All First-year students who do not form part of a university residence or a day house are referred to as *Private Students*.**

Private Students are invited to partake in the specific activities that will take place at:

Private Student Group	Venue
Group 1	Building E3, Room B12
Group 2	Building E3, Room G20
Group 3	Building E8, Room G42
Group 4	Building E8, Room G01
Group 5	Building G20, Room 101

Private students are requested join one of the following WhatsApp groups for more information:

Private Student Group	WhatsApp Group Link
Group 1	<a href="https://chat.whatsapp.com/Ful1mks4f9Q5tgFHD2LtnM">https://chat.whatsapp.com/Ful1mks4f9Q5tgFHD2LtnM</a>
Group 2	<a href="https://chat.whatsapp.com/Jy6Q6WEI2MH07D8fUwZjeX">https://chat.whatsapp.com/Jy6Q6WEI2MH07D8fUwZjeX</a>
Group 3	<a href="https://chat.whatsapp.com/EkGNg5WH5Y66Ws9YqklB9b">https://chat.whatsapp.com/EkGNg5WH5Y66Ws9YqklB9b</a>
Group 4	<a href="https://chat.whatsapp.com/J7xVu02OLvB3qhAnR5e7BE">https://chat.whatsapp.com/J7xVu02OLvB3qhAnR5e7BE</a>
Group 5	<a href="https://chat.whatsapp.com/KXUsFoGWD01LmeprW2dmve">https://chat.whatsapp.com/KXUsFoGWD01LmeprW2dmve</a>

Further enquiries may be directed to the SCC: Students' Interest and Development Officer, Mr Tshepiso Tau, 018 299 2887, or [PCSCC-SID@NWU.ac.za](mailto:PCSCC-SID@NWU.ac.za).

Private Students can collect their **student access cards** from Campus Protection Services at Building F17 on campus during the times indicated in the programme.

For further details or enquiries regarding student cards and parking discs, please visit Campus Protection Services at Building F17 on campus or contact 018 299 2209.

**LUNCH**  
**12:00-14:00**

## RESIDENCE LIFE EXPERIENCE PROGRAMME FOR DAY HOUSES

**14:00-20:30**

14:00–20:30

### Residence Life Experience Programme for Day Houses

**Venue:** Relevant Day House Venue

**Theme: Welcoming and orientation to residence**

- Ice Breaker
- Meet and greet with House Committee, House Parent, Peer helpers, SCC Guardian and Peer Helper
- Get-to-Know-Each Other
- Human Rights

## RESIDENCE LIFE EXPERIENCE PROGRAMME FOR UNIVERSITY RESIDENCES

**14:00-20:30**

14:00–20:30

### Residence Life Experience Programme for University Residences

**Venue:** Relevant University Residence

**Theme: Welcoming and orientation to residence**

- Ice Breaker
- Meet and Greet with House Committee, House Parent, Residence Officer, SCC Guardian and Peer Helper
- Get-to-Know-Each Other
- University Residence tour
- Human Rights

# STUDENT LIFE EXPERIENCE PROGRAMME FOR PRIVATE STUDENTS

## 14:00–20:30

14:00–20:30

### Student Life Experience Programme for Private Students

**Venue:** Relevant venues as indicated in programme

**Theme: Meet and Greet**

- Ice breaker
- Meet and greet with SCC: Students' Interest and Development Officer Portfolio Committee and R&O Committee members responsible for Private Students.
- Introduction to Peer helpers
- Human rights
- Group allocation for Private Students
- Get-to-Know-Each Other

## DINNER

### 16:30-18:30

16:00–18:00

**#MyNWU Session:** University Anthem, Message from the Campus DVC, NWU Brand and Values Introduction, and NWU Mascots

**Venue:** Building F14 – Amphitheatre

Private Students Group 1, Private Students Group 2, Private Students Group 4, Huis Republiek, Caput, Eikenhof, Ratau Lebone, Hombré, Vergeet-My-Nie, Heimat, Minjonet, Dinki, Villagers

18:30-20:30

**#MyNWU Session:** University Anthem, Message from the Campus DVC, NWU Brand and Values Introduction, and NWU Mascots

**Venue:** Building F14 – Amphitheatre

Private Students Group 5, Private Students Group 3, Soetdorings, Oosterhof, Bellatrix, Patria, LaVaria, Invictus, Veritas, Wag-'n-Bietjie, Heide, De Wilgers, Wanda, Denedorp, Klawerhof, Over de Voor, Karlien, Laureus, Excelsior, Kasteel

20:30–21:00

**Debriefing and Well-being Check-in with House Parent and Peer Helper**

## PROGRAMME ENDS

### 21:00

*\*\*In addition to the formal orientation programme indicated in this programme, the Informal Residence Life Experience Programme as approved by the Campus Director: Student Life takes place throughout the period presented to university residence and day house students. The Informal Residence Life Experience Programme may continue until 21:30, as planned by the House Parent and House Committees, and approved by the Campus Director: Student Life. Students who are required to prepare for the Mathematics Induction Courses, and other bridging courses offered by a Faculty may be excused from the informal programmes.*

## SUNDAY, 02 FEBRUARY 2025

**\*\*Informal Residence Life Experience Programme as approved by Campus Director: Student Life.**

## LUNCH

### 11:30-13:30

## DINNER

### 16:30-18:30

19:00-19:30

**Debriefing and Well-being Check-in with House Parent and Peer Helper**

## FORMAL PROGRAMME ENDS

### 19:30

# MONDAY, 03 FEBRUARY 2025

## BREAKFAST 07:00-08:30

08:00–13:00

### NWU School of Music Bridging Course

**Venue:** Building K1 - NWU Conservatorium

**\*\*All students registered for the following programmes must attend the bridging course:**

- *Diploma in Music*
- *BA Music and Society*
- *Baccalaureus Musicae (BMus)*

08:00–16:00

### Student Access Card Collection for Private Students

**Venue:** Building F17

08:00-12:00

### Campus Safety Summit

**Venue:** Building F14 - Amphitheatre

Time	Group
08:00-09:30	Private Students Group 4, Private Students Group 1, Caput, Huis Republiek, Bellatrix, Patria, LaVaria, Invictus, Denedorp, Wanda, Heimat, Minjonet, Eikenhof, Ratau Lebone, Vergeet-My-Nie, Hombré, Klawerhof, Over de Voor
10:30-12:00	Private Students Group 2, Private Students Group 5, Private Students Group 3, Laureus, Karlien, Excelsior, Kasteel, Villagers, Dinki, Oosterhof, Soetdorings, Veritas, Wag-'n-Bietjie, Heide, De Wilgers

08:00-12:00

### IT Services Introduction

**Venue:** Building E5, Room B04

Time	Group
08:00-08:30	Karlien, Oosterhof, Wag-'n-Bietjie, Veritas
08:30-09:00	Villagers
09:00-09:30	Private Students Group 3, Kasteel
09:30-10:00	Dinki
10:00-10:30	Vergeet-My-Nie, Hombré, Ratau Lebone, Huis Republiek, Denedorp
10:30-11:00	Private Students Group 4, Patria
11:00-11:30	Bellatrix
11:30-12:00	Heimat

08:00-11:30

### IT Services Introduction

**Venue:** Building E5, Room B03

Time	Group
08:00-08:30	Excelsior, Laureus, Soetdorings
08:30-09:00	Private Students Group 5
09:00-09:30	Heide, De Wilgers
09:30-10:00	Private Students Group 2, Minjonet
10:00-10:30	Wanda, Over de Voor, Invictus, Caput, Klawerhof
10:30-11:00	LaVaria
11:00-11:30	Private Students Group 1, Eikenhof



09:00-13:00

**LMS Onboarding Training for First-Year Students**

Time	Venue	Group
09:00-10:00	Building G4, Room 201	Excelsior, Laureus, Wag-'n-Bietjie
	Building G1, Room 117	Veritas
	Building G1, Room 113	Oosterhof
	Building G1, Room 215	Soetdorings
10:00-11:00	Building G4, Room 201	Heimat (300)
	Building G1, Room 117	Minjonet
	Building G1, Room 113	Heimat (50)
	Building G1, Room 215	Eikenhof
11:00-12:00	Building G4, Room 201	Over de Voor, Vergeet-My-Nie, Wanda, Invictus
	Building G1, Room 117	Klawerhof, Denedorp (28)
	Building G1, Room 113	Hombré, Denedorp (9)
	Building G1, Room 215	Ratau Lebone
12:00-13:00	Building G4, Room 201	LaVaria (300)
	Building G1, Room 117	Patria
	Building G1, Room 113	LaVaria (50)
	Building G1, Room 215	Caput

12:00-16:00

**Campus Tours**

Time	Group	Start Point	End Point
12:00-13:00	Private Students Group 4 (80)	Building G1	Building F9 - Heimat Building
12:00-13:00	Private Students Group 4 (80)	Building F12 - Drakenstein Restaurant	Building F5
12:00-13:00	Private Students Group 4 (80)	Building F14 – Auditorium entrance	Building G1
12:00-13:00	Huis Republiek	Building E9 grass area	Building F14 – Auditorium entrance
14:00-15:00	Wanda	Building G1	Building F9 - Heimat Building
14:00-15:00	Oosterhof, Soetdorings, Invictus	Building F12 - Drakenstein Restaurant	Building F5
14:00-15:00	Minjonet	Building F14 – Auditorium entrance	Building G1
14:00-15:00	Kasteel	Building E9 grass area	Building F14 – Auditorium entrance
14:00-15:00	Veritas	Building F5	Building E9 grass area
15:00-16:00	Karliën	Building G1	Building F9 - Heimat Building
15:00-16:00	Excelsior	Building F12 - Drakenstein Restaurant	Building F5
15:00-16:00	Wag-'n-Bietjie	Building F14 – Auditorium entrance	Building G1
15:00-16:00	Patria	Building E9 grass area	Building F14 – Auditorium entrance

**LUNCH**  
12:00-14:00

14:00-16:00

**LMS Onboarding Training for First-Year Students**

Time	Venue	Group
14:00-15:00	Building G4, Room 201	Dinki (300)
	Building G1, Room 117	Heide
	Building G1, Room 113	Dinki (50)
	Building G1, Room 215	De Wilgers
15:00-16:00	Building G4, Room 201	Bellatrix (150), Huis Republiek, Denedorp
	Building G1, Room 117	Bellatrix (85)
	Building G1, Room 113	Bellatrix (55)
	Building G1, Room 215	Bellatrix (60)

15:30-17:30

**Library and Information Services**

**Venue:** Building F14 - Amphitheatre

Time	Group
15:30-16:30	Dinki, Villagers, Heide, De Wilgers, Eikenhof, Ratau Lebone, Hombré, Vergeet-My-Nie, Over de Voor, Klawerhof, Private Students Groups 1-4
16:30-17:30	Bellatrix, Patria, Huis Republiek, Caput, Heimat, Minjonet, LaVaria, Invictus, Laureus, Karlien, Excelsior, Kasteel, Wag-'n-Bietjie, Veritas, Wanda, Denedorp, Soetdorings, Oosterhof, Private Students Group 5

**DINNER**  
**16:30-18:30**

**STUDENT LIFE AND RESIDENCE LIFE EXPERIENCE PROGRAMME**

**19:00-21:00**

19:00–20:00

**Residence Life Experience Programme for Day Houses**

**Venue:** Relevant Day House Venue

**Theme: Leadership Introduction and Trivia**

- Introduction to House Committee member portfolios
- Chapters and Societies
- General information regarding the NWU, campus and residences

19:00–20:00

**Residence Life Experience Programme for University Residences**

**Venue:** Relevant University Residence

**Theme: Leadership Introduction and Trivia**

- Introduction to House Committee member portfolios
- Chapters and Societies
- General information regarding the NWU, campus and residences

19:00–20:00

**Student Life Experience Programme for Private Students**

**Venue:** Relevant venues as indicated in programme

**Theme: Leadership Introduction and Trivia**

- Introduction to SCC members and SCC portfolios
- Chapters and Societies
- General information regarding the NWU, campus and residences

20:30–21:00

**Debriefing and Well-being Check-in with House Parent, House Committee and Peer Helper**

**PROGRAMME ENDS**  
**21:00**

21:00–21:30

**Informal Residence Life Experience Programme**

# TUESDAY, 04 FEBRUARY 2025

## BREAKFAST

07:00-08:30

08:00–13:00

### NWU School of Music Bridging Course

Venue: Building K1 - NWU Conservatorium

**\*\*All students registered for the following programmes must attend the bridging course:**

- *Diploma in Music*
- *BA Music and Society*
- *Baccalaureus Musicae (BMus)*

08:00–16:00

### Student Access Card Collection for Private Students

Venue: Building F17

08:00-12:00

### Financial Literacy

Venue: Building F14 – Amphitheatre

Time	Group
08:00-09:30	Private Students Group 5, Bellatrix, Patria, Vergeet-My-Nie, Hombré, Heide, De Wilgers, LaVaria, Invictus, Eikenhof, Ratau Lebone, Laurues, Karlien, Kasteel, Excelsior, Wanda, Dennedorp, Heimat, Minjonet
10:30-12:00	Private Students Groups 1-4, Dinki, Villagers, Huis Republiek, Caput, Wag-'n-Bietjie, Veritas, Soetdorings, Oosterhof, Klawerhof, Over de Voor

08:00-13:00

### LMS Onboarding Training for First-Year Students

Time	Venue	Group
08:00-09:00	Building G4, Room 201	Private Students Group 1, Private Students Group 2 (50)
	Building G1, Room 117	Private Students Group 2 (88)
	Building G1, Room 113	Private Students Group 2 (57)
	Building G1, Room 215	Private Students Group 2 (69)
09:00-10:00	Building G4, Room 201	Villagers (300)
	Building G1, Room 215	Villagers (50)
10:00-11:00	Building G4, Room 201	Private Students Group 5
	Building G1, Room 117	Kasteel
	Building G1, Room 113	Karlien (44)
	Building G1, Room 215	Karlien (44)
12:00-13:00	Building G4, Room 201	Private Students Group 3, Private Students Group 4 (50)
	Building G1, Room 117	Private Students Group 4 (88)
	Building G1, Room 113	Private Students Group 4 (57)
	Building G1, Room 215	Private Students Group 4 (69)

08:00-13:00

### Adjusting to Higher Education: The Difference Between School and University

Time	Venue	Group
08:00-09:00	Building E5, Room B04	Wag-'n-Bietjie, Veritas, Soetdorings
09:00-10:00		Huis Republiek, Klawerhof, Caput, Oosterhof, Over de Voor
10:00-11:00		Hombré, Heide, Eikenhof, Vergeet-My-Nie, Invictus, De Wilgers
11:00-12:00		Patria, Minjonet, Karlien, Wanda
12:00-13:00		Private Students Group 5, Dennedorp, Kasteel



Time	Venue	Group
08:00-09:00	Building E5, Room B03	Villagers
09:00-10:00		Dinki
10:00-11:00		LaVaria, Excelsior
11:00-12:00		Bellatrix
12:00-13:00		Heimat

08:30-16:00

### Campus Tours

Time	Group	Start Point	End Point
08:30-09:30	Private Students Group 3 (80)	Building G1	Building F9 - Heimat Building
08:30-09:30	Private Students Group 3 (80)	Building F12 - Drakenstein Restaurant	Building F5
08:30-09:30	Private Students Group 3 (80)	Building F14 – Auditorium entrance	Building G1
10:00-11:00	Laureus	Building F14 – Auditorium entrance	Building G1
11:30-12:30	Ratau Lebone	Building G1	Building F9 - Heimat Building
14:00-15:00	Villagers (90)	Building G1	Building F9 - Heimat Building
14:00-15:00	Villagers (90)	Building F12 - Drakenstein Restaurant	Building F5
14:00-15:00	Villagers (90)	Building F14 – Auditorium entrance	Building G1
14:00-15:00	Villagers (90)	Building E9 grass area	Building F14 – Auditorium entrance
14:00-15:00	De Wilgers, Denedorp	Building F5	Building E9 grass area
15:00-16:00	Heide	Building G1	Building F9 - Heimat Building
15:00-16:00	Private Students Group 5 (80)	Building F14 – Auditorium entrance	Building G1
15:00-16:00	Private Students Group 5 (80)	Building E9 grass area	Building F14 – Auditorium entrance
15:00-16:00	Private Students Group 5 (80)	Building F5	Building E9 grass area

## LUNCH 12:00-14:00

14:00-15:00

### Adjusting to Higher Education: The Difference Between School and University

Time	Venue	Group
14:00-15:00	Building E5, Room B04	Private Students Group 1 Ratau Lebone
14:00-15:00	Building E5, Room B03	Private Students Group 2, Laureus
14:00-15:00	Building E5, Room B02	Private Students Group 3
14:00-15:00	Building E5, Room B01	Private Students Group 4

14:00-16:00

### Mathematics Induction Course (All Faculty of Natural and Agricultural Sciences students)

**Venue:** Building G4, Room 201

First-year student registered for the following programmes with the Faculty of Natural and Agricultural Sciences are requested to attend.

Faculty of Natural Sciences	
<ul style="list-style-type: none"> <li>• Actuarial Science (2FQ H01 - N301P)</li> <li>• Applied Mathematics and Chemistry (2FF H13 - N301P/M)</li> <li>• Business Analytics (2FR H01 - N301P/V)</li> <li>• Chemistry and Mathematics (2FF H11 - N301P/M)</li> <li>• Chemistry and Physics (2FF H05 - N301P/M)</li> <li>• Computer Science and Economics (2FF H28 - N301P/V)</li> <li>• Computer Science and Mathematics (2FF H09 - N301P/M/V)</li> <li>• Computer Science and Statistics (2FF H26 - N301P/V)</li> <li>• Financial Mathematics (2FS H01 - N301P/V)</li> </ul>	<ul style="list-style-type: none"> <li>• Geography and Applied Mathematics (2FF H30 - N301P)</li> <li>• Information Technology and Computer Science (2DX H01 N302P/V) if MTHS111 is elected</li> <li>• Mathematics (2FG H01 - N301P)</li> <li>• Mathematics and Economics (2FF H29 - N301P/V)</li> <li>• Physics and Applied Mathematics (2FF H24 - N301P/M)</li> <li>• Physics and Computer Science (2FF H25 - N301P/M)</li> <li>• Physics and Mathematics (2FF H23 - N301P/M)</li> <li>• Quantitative Risk Management (2FT H01 - N301P/V)</li> <li>• Statistics and Mathematics (2FG H02 - N301P/V)</li> </ul>
<p><b>Students appointed by the admission office or Faculty Manager to attend the course for possible admission</b></p>	

**DINNER**  
**16:30-18:30**

16:00–18:00

**#MyStudentLife Session: Introduction to Student Life, Portfolio Committees, Students' Chapter Chairpersons**

**Venue:** Building F14 – Amphitheatre

Private Students Group 1, Private Students Group 2, Private Students Group 4, Eikenhof, Ratau Lebone, Huis Republiek, Caput, Hombré, Vergeet-My-Nie, Heimat, Minjonet, Dinki, Villagers

18:00–20:00

**#MyStudentLife Session: Introduction to Student Life, Portfolio Committees, Students' Chapter Chairpersons**

**Venue:** Building F14 – Amphitheatre

Private Students Group 3, Private Students Group 5, Bellatrix, Patria, Excelsior, Kasteel, Veritas, Wag-'n-Bietjie, Heide, De Wilgers, Wanda, Denedorp, Klawerhof, Over de Voor, Karlien, Laureus, Soetdorings, Oosterhof, LaVaria, Invictus

**STUDENT LIFE AND RESIDENCE LIFE EXPERIENCE PROGRAMME**

**19:00-21:00**

19:00-20:00

**Residence Life Experience Programme for Day Houses**

**Venue:** Relevant Day House venue

**Theme:** Introduction to CSE, CSE projects and RAG

19:00-20:00

**Residence Life Experience Programme for University Residence**

**Venue:** Relevant University Residence

**Theme:** Introduction to CSE, CSE projects and RAG

19:00-20:00

**Student Life Experience Programme for Private Students**

**Venue:** Relevant venues as indicated in programme

**Theme:** Introduction to CSE, CSE projects and RAG

20:30–21:00

**Debriefing and Well-being Check-in with House Parent, House Committee and Peer Helper**

**PROGRAMME ENDS**

**21:00**

21:00–21:30

**Informal Residence Life Experience Programme**

**WEDNESDAY, 05 FEBRUARY 2025**

**BREAKFAST**  
**07:00-08:30**

08:00–13:00

**NWU School of Music Bridging Course**

**Venue:** NWU Conservatorium, Building K1

**\*\*All students registered for the following programmes must attend the bridging course:**

- *Diploma in Music*
- *BA Music and Society*
- *Baccalaureus Musicae (BMus)*

08:00–16:00

**Student Access Card Collection for Private Students**

**Venue:** Building F17

08:00-10:00

**Mathematics Induction Course**

**Venue:** Building G4, Room 201 and Building G1, Room 117

First-year student registered for the following programmes with the Faculty of Engineering and Faculty of Humanities are requested to attend.

Faculty of Humanities	Faculty of Engineering
Any BA with Mathematics as elective	<ul style="list-style-type: none"> <li>• Chemistry (7CG K03 - I401P)</li> <li>• Computer and Electronics (7CH K01 - I424P)</li> <li>• Electrical and Electronics (7CN K01 - I423P)</li> <li>• Electromechanical (7CL K01 - I425P)</li> <li>• Industrial (7CK K01 - I437P)</li> <li>• Mechanical (7CJ K01 - I426P)</li> <li>• Mechatronics (7CR K01 - I401P)</li> </ul>
Students appointed by the admission office or Faculty Manager to attend the course for possible admission	

10:00-14:00

**Mathematics Induction Course (available to Mathematics Induction Course students to continue on their own)**

**Venue:** Building G4, Room 201 and Building G1, Rooms 117, 113, 215

08:00-12:30

**Community and Stakeholder Engagement Bus tours**

Time	Group
08:00-10:00	Dinki, Laureus, Oosterhof, Soetdorings, Huis Republiek, Caput, Hombré, Vergeet-My-Nie, Kasteel, Excelsior, Klawerhof, Over de Voor, Veritas, Wag-'n-Bietjie, Private Students
10:30-12:30	LaVaria, Invictus, Bellatrix, Patria, Heimat, Minjonet, Wanda, Denedorp, Eikenhof, Ratau Lebone, Heide, De Wilgers, Villagers, Karlien, Private Students

08:30-17:30

**GBV and Gender Awareness**

Time	Venue	Group
08:30-10:30	Building E5, Room B04	Invictus, Minjonet, De Wilgers, Karlien, Wanda
10:30-12:30		Caput, Soetdorings, Laureus, Oosterhof, Huis Republiek, Klawerhof
13:30-15:30		Heimat
15:30-17:30		Ratau Lebone, Wag-'n-Bietjie, Eikenhof, Excelsior, Kasteel
08:30-10:30	Building E5, Room B03	Villagers
10:30-12:30		Dinki
13:30-15:30		Bellatrix
15:30-17:30		Private Students Group 5, Veritas

**LUNCH**  
12:00-14:00

08:00-15:00

**Campus Tours**

Time	Group	Start Point	End Point
08:00-09:00	LaVaria (90)	Building G1	Building F9 - Heimat Building
08:00-09:00	LaVaria (90)	Building F12 - Drakenstein Restaurant	Building F5
08:00-09:00	LaVaria (90)	Building F14 – Auditorium entrance	Building G1
08:00-09:00	Eikenhof	Building E9 grass area	Building F14 – Auditorium entrance
08:00-09:00	LaVaria (90)	Building F5	Building E9 grass area
09:00-10:00	Heimat (90)	Building F12 - Drakenstein Restaurant	Building F5
09:00-10:00	Heimat (90)	Building F14 – Auditorium entrance	Building G1
09:00-10:00	Heimat (90)	Building E9 grass area	Building F14 – Auditorium entrance

Time	Group	Start Point	End Point
09:00-10:00	Heimat (90)	Building F5	Building E9 grass area
11:00-12:00	Hombre	Building G1	Building F9 - Heimat Building
11:00-12:00	Vergeet-My-Nie	Building F12 - Drakenstein Restaurant	Building F5
11:00-12:00	Over de Voor	Building F14 – Auditorium entrance	Building G1
14:00-15:00	Private Student Group 2 (80)	Building G1	Building F9 - Heimat Building
14:00-15:00	Private Student Group 2 (80)	Building F12 - Drakenstein Restaurant	Building F5
14:00-15:00	Private Student Group 2 (80)	Building F14 – Auditorium entrance	Building G1
14:00-15:00	Klawerhof	Building E9 grass area	Building F14 – Auditorium entrance

14:00-17:00

**The First-Year Navigator: Your Gateway to Academic Success (BUSSE survey will also be completed)**

Time	Venue	Group
14:00-15:00	Building G4, Room 201	Wanda, Wag-'n-Bietjie, Minjonet, Private Students Group 5 (50)
	Building G1, Room 117	Private Students Group 5 (88)
	Building G1, Room 113	Private Students Group 5 (57)
	Building G1, Room 215	Private Students Group 5 (69)
15:00-16:00	Building G4, Room 201	Private Students Group 3, Private Students Group 4 (50)
	Building G1, Room 117	Private Students Group 4 (88)
	Building G1, Room 113	Private Students Group 4 (57)
	Building G1, Room 215	Private Students Group 4 (69)
16:00-17:00	Building G4, Room 201	Private Students Group 1, Private Students Group 2 (50)
	Building G1, Room 117	Private Students Group 2 (88)
	Building G1, Room 113	Private Students Group 2 (57)
	Building G1, Room 215	Private Students Group 2 (69)

**DINNER**  
16:30-18:30

**STUDENT LIFE EXPERIENCE PROGRAMME**

**14:00-21:00**

14:00–16:00

**#MyStudentLife Session: Primarii Introduction**

**Venue:** Building F14 – Amphitheatre

Dinki, Villagers, Oosterhof, Soetdorings, LaVaria, Invictus, Caput, Huis Republiek, Laureus, Karlien

16:00–18:00

**#MyStudentLife Session: Primarii Introduction**

**Venue:** Building F14 – Amphitheatre

Heimat, Minjonet, Denedorp, Wanda, Heide, De Wilgers, Over de Voor, Klawerhof, Oppirif

18:00–20:00

**#MyStudentLife Session: Primarii Introduction**

**Venue:** Building F14 – Amphitheatre

Bellatrix, Patria, Veritas, Wag-'n-Bietjie, Ratau Lebone, Eikenhof, Excelsior, Kasteel, Vergeet-My-Nie, Hombré

18:00–20:00

**Student Life Experience Programme for Private Students**

**Theme:** Movie Night

**Venue:** Building N2A, Room G01 & G02



## RESIDENCE LIFE EXPERIENCE PROGRAMME

19:00-21:00

19:00–20:00

### Residence Life Experience Programme for Day Houses

**Venue:** Relevant Day House Venue

**Theme:** Traditions and Anthem

19:00–20:00

### Residence Life Experience Programme for University Residence

**Venue:** Relevant University Residence

**Theme:** Traditions and Anthem

20:30–21:00

### Debriefing and Well-being Check-in with House Parent, House Committee and Peer Helper

## PROGRAMME ENDS

21:00

21:00–21:30

### Informal Residence Life Experience Programme

## THURSDAY, 06 FEBRUARY 2025

### BREAKFAST

07:00-08:30

08:00-13:00

### NWU School of Music Bridging Course

**Venue:** Building K1 - NWU Conservatorium

**\*\*All students registered for the following programmes must attend the bridging course:**

- *Diploma in Music*
- *BA Music and Society*
- *Baccalaureus Musicae (BMus)*

08:00-16:00

### Student Access Card Collection for Private Students

**Venue:** Building F17

08:00-13:00

### The First-Year Navigator: Your Gateway to Academic Success (BUSSE survey will also be completed)

Time	Venue	Group
08:00-09:00	Building G4, Room 201	LaVaria (300)
	Building G1, Room 117	Kasteel
	Building G1, Room 113	LaVaria (50)
	Building G1, Room 215	Ratau Lebone
09:00-10:00	Building G4, Room 201	Laureus, Patria
	Building G1, Room 117	Veritas
	Building G1, Room 113	Oosterhof
	Building G1, Room 215	Klawerhof
10:00-11:00	Building G4, Room 201	Villagers (300)
	Building G1, Room 117	Karliën
	Building G1, Room 113	Villagers (50)
	Building G1, Room 215	Caput, Soetdorings

Time	Venue	Group
11:00-12:00	Building G4, Room 201	Heimat (300)
	Building G1, Room 117	Heide
	Building G1, Room 113	Hombré
	Building G1, Room 215	Heimat (50)
12:00-13:00	Building G4, Room 201	Dinki (300)
	Building G1, Room 117	Vergeet-My-Nie
	Building G1, Room 113	Eikenhof
	Building G1, Room 215	Dinki (50)

08:00-16:00

#### GBV and Gender awareness

Time	Venue	Group
08:00-10:00	Building E5, Room B04	Private Students Group 2, (190) Heide, Over de Voor
10:00-12:00		Private Students Group 3, Private Students Group 4 (100)
08:00-10:00	Building E5, Room B03	Private Students Group 1, Private Students Group 2 (60), Dennedorp
10:00-12:00		Private Students Group 4 (150), LaVaria
14:00-16:00	Building E5, Room B01	Patria, Hombré, Vergeet-My-Nie, Eikenhof

08:00-13:00

#### Language Awareness

Time	Venue	Group
08:00-09:00	Building E5, Room B01	Private Students Group 3
09:00-10:00		Vergeet-My-Nie, Wanda, Excelsior
10:00-11:00		Kasteel, Huis Republiek, Invictus
11:00-12:00		Oosterhof, Over de Voor, Wag-'n-Bietjie
12:00-13:00		Private Students Group 2
12:00-13:00	Building E5, Room B03	Bellatrix
08:00-09:00	Building E5, Room B02	Private Students Group 4
09:00-10:00		Hombré, Eikenhof, De Wilgers
10:00-11:00		Ratau Lebone, Minjonet, Dennedorp
11:00-12:00		Private Students Group 5
12:00-13:00		Patria, Laureus, Klawerhof
12:00-13:00	Building E5, Room B04	Private Students Group 1, Karlien

**LUNCH**  
12:00-14:00

14:00-16:00

#### Language Awareness

Time	Venue	Group
14:00-15:00	Building E5, Room B04	Villagers
15:00-16:00		Heide, Caput, Veritas, Soetdorings
14:00-15:00	Building E5, Room B03	Dinki
15:00-16:00		Heimat
14:00-15:00	Building E5, Room B02	LaVaria
14:00-15:00	Building E5, Room B04	Villagers

08:00-09:00

**Campus Tours**

Time	Group	Start Point	End Point
08:00-09:00	Bellatrix (90)	Building G1	Building F9 - Heimat Building
08:00-09:00	Bellatrix (90)	Building F12 - Drakenstein Restaurant	Building F5
08:00-09:00	Bellatrix (90)	Building F14 – Auditorium entrance	Building G1
08:00-09:00	Bellatrix (90)	Building E9 grass area	Building F14 - Auditorium entrance
08:00-09:00	Caput	Building F5	Building E9 grass area
09:00-10:00	Dinki (90)	Building G1	Building F9 - Heimat Building
09:00-10:00	Dinki (90)	Building F12 - Drakenstein Restaurant	Building F5
09:00-10:00	Dinki (90)	Building F14 – Auditorium entrance	Building G1
09:00-10:00	Dinki (90)	Building E9 grass area	Building F14 - Auditorium entrance
14:00-15:00	Private Students Group 1 (80)	Building G1	Building F9 - Heimat Building
14:00-15:00	Private Students Group 1 (80)	Building F12 - Drakenstein Restaurant	Building F5
14:00-15:00	Private Students Group 1 (80)	Building F14 – Auditorium entrance	Building G1

14:00-16:00

**The First-Year Navigator: Your Gateway to Academic Success (BUSSE survey will also be completed)**

Time	Venue	Group
14:00-15:00	Building G4, Room 201	Excelsior, De Wilgers, Over de Voor
	Building G1, Room 117	Huis Republiek
	Building G1, Room 113	Dennedorp
	Building G1, Room 215	Invictus
15:00-16:00	Building G4, Room 201	Bellatrix (300)

16:00-17:00

**Mathematics Induction Course (available to Mathematics Induction Course students to continue on their own)**

**Venue:** Building G4, Room 201 and Building G1, Rooms 117, 113, 215

14:00–20:00

**Leadership Introduction: SCC Introduction**

**Venue:** Building F14 - Amphitheatre

Time	Group
14:00-16:00	Private Students Group 3, Private Students Group 4, Private Students Group 5, Wanda, Ratau Lebone, Wag-'n-Bietjie, Kasteel, Klawerhof, Oosterhof, Karlien
16:00-18:00	Private Students Group 1, Private Students Group 2, De Wilgers, Excelsior, Dinki, Dennedorp, Invictus, Villagers, Huis Republiek, LaVaria, Over de Voor, Laureus
18:00-20:00	Caput, Patria, Veritas, Heide, Heimat, Soetdorings, Minjonet, Bellatrix, Vergeet-My-Nie, Hombré, Eikenhof

**DINNER**  
**16:30-18:30**

20:30–21:00

**Debriefing and Well-being Check-in with House Parent, House Committee and Peer Helper**

**PROGRAMME ENDS**  
**21:00**

*\*\*No Informal Residence Life Programmes will be presented on this day.*



Don't hesitate to get in touch with us and talk to one of our ambassadors.  
We are ready to answer your questions!

**Thoughts-and-complaints line: SMS**

**POTCHEFSTROOM CAMPUS: 31750**

**Fraud hotline / reporting email:**

**[report-fraud@nwu.ac.za](mailto:report-fraud@nwu.ac.za)**

**WhatsApp line:**  
+27 (0)60 070 2606



**Email:**  
[studies@mynwu.ac.za](mailto:studies@mynwu.ac.za)

**SMS line:**  
31750



**Find us on our NWU Website:**  
[studies.nwu.ac.za](http://studies.nwu.ac.za)



# FRIDAY, 07 FEBRUARY 2024

**BREAKFAST**  
07:00-08:30

## FACULTY EXPERIENCE PROGRAMME

08:00-13:00

FACULTY OF EDUCATION		
Time	Activity	Venue
<b>Venue allocation</b>		
Foundation Phase		Building C5, Room G05
Intermediate Phase		Building C5, Room G06
Senior and FET Phase		Building C6, Room G07
**Students forming part of the groups indicate above remain in the indicated venue, with presenters rotating between venues.		
08:00-08:15	Welcoming by Deputy Dean	Venues indicated above
08:20-09:10	Importance of languages in teacher education	Venues indicated above
09:15-10:00	Beehive videos and practise	Building C5, Room G05
	Emergency 911 (Concessions and Psychosocial support)	Building C5, Room G06
	Time Management (Timetables and Exam Timetables – Assessment plans on eFundi)	Building C6, Room G07
10:00-10:20	COMFORT BREAK	
10:20-11:10	Emergency 911 (Concessions and Psychosocial support)	Building C5, Room G05
	Time Management (Timetables and Exam Timetables – Assessment plans on eFundi)	Building C5, Room G06
	Beehive videos and practise	Building C6, Room G07
11:10-11:45	Time Management (Timetables and Exam Timetables – Assessment plans on eFundi)	Building C5, Room G05
	Beehive videos and practise	Building C5, Room G06
	Emergency 911 (Concessions and Psychosocial support)	Building C6, Room G07
11:45-12:30	Student Life in the Faculty: Introduction of the Students' Academic Chapter (SAC)	Venues indicated above
14:00-14:30	10 Golden rules for teachers	Building C5, Room G05
	Grievance procedure	Building C5, Room G06
	TPrac	Building C6, Room G07
14:35-15:05	TPrac	Building C5, Room G05
	10 Golden rules for teachers	Building C5, Room G06
	Grievance procedure	Building C6, Room G07
15:10-15:40	Grievance procedure	Building C5, Room G05
	TPrac	Building C5, Room G06
	10 Golden rules for teachers	Building C6, Room G07
15:45-16:30	Orientation engagement with SAC	Venues indicated above

FACULTY OF ECONOMIC AND MANAGEMENT SCIENCES		
Time	Activity	Venue
<b>CHARTERED AND FORENSIC ACCOUNTANCY</b>		
08:00-08:15	Welcoming Message by Deputy-Director	Building E5 Room B04
08:15-08:30	Meet your lecturers	
08:30-09:30	Programme Presentation: Chartered and Forensic Accountancy	
09:30-10:00	How to engage with the eFundi sites	
10:00-10:15	The importance of consultation	
10:15-10:30	Time management tips	
10:30-10:45	Comfort break	

FACULTY OF ECONOMIC AND MANAGEMENT SCIENCES		
Time	Activity	Venue
10:45-11:15	Interactive activities	Building E5 Room B04
11:15-11:30	Managing your finances	
11:30-11:45	The importance of textbooks	
11:45-12:15	General Q&A	
12:15-12:30	The world of entrepreneurship (bhive EDC)	
12:30-12:45	Meet the Student Academic Chapter (SAC – EMS)	
12:15-12:30	Closure	
FINANCIAL AND MANAGEMENT ACCOUNTANCY		
08:00-08:15	Meet your lecturers	Building E5 Room B03
08:15-08:30	Welcoming Message by Deputy-Director	
08:30-09:30	Programme Presentation: Financial and Management Accountancy	
09:30-10:00	Interactive activities	
10:00-10:15	Time management tips	
10:15-10:30	The importance of consultation	
10:30-10:45	Comfort break	
10:45-11:15	How to engage with the eFundi sites	Building E5 Room B03
11:15-11:30	The importance of textbooks	
11:30-11:45	Managing your finances	
11:45-12:15	General Q&A	
12:15-12:30	Meet the Student Academic Chapter (SAC – EMS)	
12:30-12:45	The world of entrepreneurship (bhive EDC)	
12:15-12:30	Closure	
SCHOOL OF ECONOMIC SCIENCES		
08:30-08:45	Opening and Welcome	Building E3, Room K12
08:45-08:55	Programme Outcomes: International Trade	
08:55-09:05	Programme Outcomes: Economics	
09:05-09:15	Programme Outcomes: Agricultural Economics	
09:15-09:25	Programme Outcomes: Risk Management	
09:25-09:45	Time Management	
09:45-10:00	Textbooks and Class Attendance	
10:00-10:15	Comfort Break	Building E3, Room K12
10:15-10:30	The Use of Artificial Intelligence in Your Studies	
10:30-11:00	eFundi	
	Entrepreneurship	
	Meet the SAC	
11:00-11:30	Q&A Session	
SCHOOL OF MANAGEMENT SCIENCES		
08:30-08:45	Opening and Welcome	Building E5 Room B01 and B02
08:45-09:00	Introduction to Business Management	
09:00-09:15	Introduction to Marketing Management, Marketing and Communication, Marketing and Tourism	
09:15-09:30	The world of entrepreneurship (bhive EDC)	
09:30-09:45	Meet the Student Academic Chapter (SAC – EMS)	
09:45-10:30	Quiz Activity	
10:30-11:00	Q&A Session	
SCHOOL OF INDUSTRIAL PSYCHOLOGY AND HUMAN RESOURCE MANAGEMENT		
08:15-08:30	Opening and Welcome	Building E3 Room G20
08:30-08:45	Overview of the School of Industrial Psychology and Human Resource Management	
08:45-09:15	Outlining the Differences between Programmes Introduction to Lecturers	
09:15-09:45	Expectations and Responsibilities	
09:45-10:15	In's-&-out's of Assessment	

FACULTY OF ECONOMIC AND MANAGEMENT SCIENCES		
Time	Activity	Venue
10:15-10:30	Comfort Break	
10:30-10:45	The world of entrepreneurship (bhive EDC)	Building E3 Room G20
10:45-11:30	Support Structures within the NWU and the School (Including Meet the Student Academic Chapter (SAC – EMS))	
11:30-12:00	Introducing Professional Bodies and Industry Partners	
12:00-12:30	Path to Postgraduate Studies	
12:30-13:00	Interactive Activity	
SCHOOL OF TOURISM MANAGEMENT		
08:30-08:45	Opening and Welcome	Building E8 Room G34
08:45-09:15	Meet and Greet with Lecturers and Staff	
09:15-09:30	The world of entrepreneurship (bhive EDC)	
09:30-09:45	Meet the Student Academic Chapter (SAC – EMS)	
09:45-11:40	Team Building Activity	
11:40-12:15	Introduction to eFundi: Tourism Edition	

FACULTY OF ENGINEERING				
TIME	DESCRIPTION			
08:00-08:20	Registration and moving to halls			
VENUE	Building N2A, Room G01 (EERI and IE)		Building N2A, Room G02 (MEGI and CEMI)	
08:20-08:40	Dean opening and welcome		SAC welcome	
08:40-09:00	ECSA		Mentorship program	
09:00-09:20	SAC welcome		Dean opening and welcome	
09:20-09:40	Mentorship program		SALA and Bursary office	
09:40-10:00	SALA and Bursary office		ECSA	
10:00-10:30	Break time			
VENUE	Building N2A, Room G01	Building N2A, Room G02	Building N2B, Room G01	Building N2B, Room G02
10:30-11:00	EERI	CEMI	MEGI	IE
	N2A G01		SAC Office	
11:00-12:30	Faculty OHS and Safety induction (EERI & IE)		SAC Computer software installation (MEGI & CEMI)	
12:30-13:30	Lunch break			
13:30-15:30	Faculty OHS and Safety induction (MEGI & CEMI)		SAC Computer software installation (EERI & IE)	

FACULTY OF HEALTH SCIENCES		
TIME	DESCRIPTION	VENUE
Faculty of Health Science students are allocated to the following venues for orientation purposes:		
	Human Movement Sciences	Building G20, Room 101
	Pharmacy	Building G20, Room G01
	Nursing	Building E8, Room 42
	Occupational Hygiene	Building F10, Room 101
	Physiology	Building G16, Room G18
	Consumer Sciences	Building F15, Room 101
	Nutrition	Building G16, Room G16
	Social Work	Building E8, Room G38
	Psychology	Building E8, Rooms G35, G36, G37
08:00-12:00	Faculty Welcoming and Information Session <ul style="list-style-type: none"> <li>• Faculty Specific Terminology</li> <li>• Academic &amp; University Terminology</li> <li>• Programme Outlay</li> <li>• Module outcomes, names and abbreviations</li> <li>• Academic Rules</li> <li>• Timetables, assessments and schedules</li> </ul> Tour your classrooms and laboratories	Venues indicated above
12:00-13:00	Introduction to Faculty of Health Sciences Students' Academic Chapter	Venues indicated above

FACULTY OF HEALTH SCIENCES		
TIME	DESCRIPTION	VENUE
14:00-15:00	Centre for Health and Human Performance <i>**Optional tour of Sport Science and Biokinetics to learn more about joining fees and services.</i>	Building K21 (NWU Fanie du Toit Sport Grounds)
14:00-16:00	Student Administration Assistance <i>**Students who have registration questions or queries have an opportunity to meet with the respective Programme Leaders. Contact the Academic Advisor.</i>	

FACULTY OF HUMANITIES		
Time	Activity	Venue
08:00-09:00	Introduction to the Faculty of Humanities Students' Academic Chapter	Venues indicated below**
09:00-10:00	Get to Know your Faculty and Student Academic Lifecycle Administration	
10:00-10:15	Comfort Break	
<i>**Students divide into relevant Faculty School Groups</i>		
10:15-13:00	Introduction to Faculty School, Programmes, Lecturers and Processes	
	School of Government Studies	Building E8, Rooms G39, G40 & G41
	School of Communication	Building F13, Room 105
	School of Languages	Building F13, Room G20
	School of Philosophy	Building F13, Rooms G18 & G19
	School of Social Sciences	Building E8, Room G01

FACULTY OF LAW		
TIME	DESCRIPTION	VENUE
08:00-08:30	Introduction to Faculty Management Committee and First-year Module Lecturers	Building B14
08:30-10:00	Curriculum Information Session	
10:00-11:15	Academic Orientation Sessions and Processes: Deputy Director Undergraduate Studies	
11:15-11:30	Comfort break	
11:30-13:00	Academic Ethics and Integrity within the Faculty Context	
14:00-15:30	Faculty Mentoring and Tutoring Programme for First-year Students	
15:30-16:30	Introduction to F-LAW Students' Academic Chapter	

FACULTY OF NATURAL AND AGRICULTURAL SCIENCES		
TIME	DESCRIPTION	VENUE
08:00-08:15	Arrival of students and venue allocation	Building G1
08:15-08:30	Welcoming message from Executive Dean and senior staff	Building G1, Rooms 102, 111, 112
08:30-09:30	Introduction to the Faculty Processes and Important Information	
09:30-09:45	Comfort break	
09:45-13:00	Introduction and engagements with F-NAS Students' Academic Chapter	Building G1, Rooms 102, 111, 112
14:00-16:00	Registration Amendment Assistance <i>**Students who have registration questions or queries have an opportunity to meet with the respective Programme Leaders. Contact the Academic Advisor.</i>	Building G5, Rooms G03, G13, G14

FACULTY OF THEOLOGY		
TIME	DESCRIPTION	VENUE
08:00-08:30	Faculty Welcoming and Introduction	Building K11, Room 110
08:30-09:00	Diversity of Faculty and Theological Paradigms	
09:00-09:45	Introduction to Theology Qualifications, Career and Academic Opportunities	

FACULTY OF THEOLOGY		
TIME	DESCRIPTION	VENUE



09:45-10:15	Academic Orientation on Computers and Computer Programmes	Building K11, Room 110
10:15-11:15	Academic Writing Style, Study Methods, Faculty Specific Terminology	
11:15-12:00	Library Introduction	
12:00-13:00	Curriculum Amendments	
14:00-16:30	Introduction to F-THEO Students' Academic Chapter	

**LUNCH**  
**12:00-14:00**

14:00-17:00

**Mathematics Induction Course (available to Mathematics Induction Course students to continue on their own)**

**Venue:** Building G4, Room 201 and Building G1, Rooms 117, 113, 215

**ORIENTATION PROGRAMME**  
**16:00-20:00**

16:00-18:00

**#MyCampus Session: Introduction to Health Care Centre, SCD: Thuso, Emergency Services, Protection Services, Student Judicial Services and Safety Health Environment Department**

**Venue:** Building F14 – Amphitheatre

Private Students Group 3, Private Students Group 5, Bellatrix, Patria, LaVaria, Invictus, Veritas, Wag-'n-Bietjie, Heide, De Wilgers, Wanda, Denedorp, Klawerhof, Over de Voor, Karlien, Laureus, Excelsior, Kasteel, Soetdorings, Oosterhof

18:00–20:00

**#MyCampus Session: Introduction to Health Care Centre, SCD: Thuso, Emergency Services, Protection Services, Student Judicial Services and Safety Health Environment Department**

**Venue:** Building F14 – Amphitheatre

Private Students Group 1, Private Students Group 2, Private Students Group 4, Huis Republiek, Caput, Hombré, Vergeet-My-Nie, Eikenhof, Ratau Lebone, Heimat, Minjonet, Dinki, Villagers

**DINNER**  
**16:30-18:30**

**STUDENT LIFE AND RESIDENCE LIFE EXPERIENCE PROGRAMME**  
**19:00-21:00**

19:00-20:00

**Residence Life Experience Programme for Day Houses Venue: Relevant Day House Venue**

**Theme:** Diversity in Residences and on Campus (Multi-culturalism and Multilingualism)

19:00-20:00

**Residence Life Experience Programme for University Residences Venue: Relevant University Residence**

**Theme:** Diversity in Residences and on Campus (Multi-culturalism and Multilingualism)

19:00-20:00

**Student Life Experience Programme for Private Students Venue: Relevant venues as indicated in programme**

**Theme:** Diversity on Campus (Multi-culturalism and Multilingualism)

20:30–21:00

**Debriefing and Well-being Check-in with House Parent, House Committee and Peer Helper**

**PROGRAMME ENDS**  
**21:00**

21:00-21:30

**Informal Residence Life Programme**

# CAMPUS WELCOMING DAY

SATURDAY, 08 FEBRUARY 2024

**BREAKFAST**  
07:00-08:30

## CAMPUS WELCOMING EVENT FOR FIRST-YEAR STUDENTS 10:00-12:00

10:00-11:00

The following students will attend this session:

Private Students Group 5, Private Students Group 3, Bellatrix, Patria, LaVaria, Invictus, Veritas, Wag-'n-Bietjie, Soetdorings, Oosterhof, Heide, De Wilgers, Wanda, Denedorp, Klawerhof, Over de Voor, Karlien, Laureus, Excelsior, Kasteel

Programme Event	Presenter
Welcoming and Introduction	-
Message from Students' Campus Council Chairperson	Mr Reuben Coetzer
<i>Entertainment</i>	-
Message from Students' Representative Council President (virtual)	Mr Kamohelo Zwane
Message from Campus Director: Student Life	Dr Corrie Rheeder
Message from Executive Director: Student Life (virtual)	Prof Sibusiso Chalufu
<i>Entertainment</i>	-
Message from Deputy-Vice Chancellor of the Mahikeng Campus	Prof Daryl Balia
Message from Vice-Chancellor and Principal (virtual)	Prof Bismark Tyobeka
<i>University Anthem</i>	-

11:30-12:30

The following students will attend this session:

Private Students Group 1, Private Students Group 2, Private Students Group 4, Huis Republiek, Caput, Hombré, Vergeet-My-Nie, Eikenhof, Ratau Lebone, Heimat, Minjonet, Dinki, Villagers

Programme Event	Presenter
Welcoming and Introduction	-
Message from Students' Campus Council Chairperson	Mr Reuben Coetzer
<i>Entertainment</i>	-
Message from Students' Representative Council President (virtual)	Mr Kamohelo Zwane
Message from Campus Director: Student Life	Dr Corrie Rheeder
Message from Executive Director: Student Life (virtual)	Prof Sibusiso Chalufu
<i>Entertainment</i>	-
Message from Deputy-Vice Chancellor of the Mahikeng Campus	Prof Daryl Balia
Message from Vice-Chancellor and Principal(virtual)	Prof Bismark Tyobeka
<i>University Anthem</i>	-

**LUNCH**  
12:00-14:00



**It's more than a greeting!**

The #NWUEagles see language as a bridge instead of a barrier. We like talking to one another and use different languages to understand each other. Along the way, we broaden our horizons and make each other feel a little more welcome.

**It all starts here® ... with a hello!**



## STUDENT LIFE FUN DAY

14:00-20:00

14:00 -20:00

**First-years' Netball, Fun day and Picnic**

**Venue:** Fanie du Toit Sports Grounds

20:30–21:00

**Debriefing and Well-being Check-in with House Parent, House Committee and Peer Helper**

## FORMAL ORIENTATION PROGRAMME CONCLUDES

21:00

## INFORMAL ORIENTATION AND CO-CURRICULAR PROGRAMME

10-15 FEBRUARY 2025

**\*\*Informed by the progress made with regards to First-year Student registration and arrival at campus,** an Informal Orientation and Co-Curricular programme will be presented to First-year students from 10-15 February 2025. The programme will be developed and approved by the relevant Campus Director: Student Life, within the following framework:

Description	Time	Date
Informal Orientation and Co-Curricular Programme <ul style="list-style-type: none"><li>University Residences and Day Houses</li><li>Private Students (where relevant)</li></ul>	19:00-22:00	10 February 2025
		11 February 2025
		12 February 2025
		13 February 2025
	19:00-00:00	14 February 2025
-	15 February 2025	

More information on the Informal Orientation and Co-Curricular Programme will be communicated directly to First-year Students.



# Got a question? Get in touch!

---



0860 169698 (0860 1mynwu) - Toll free



studies@nwu.ac.za



+27 (0) 60 070 2606



31750

# Join our online NWU Family!

---



NWU - North-West University



North-West University



North-West University



theNWU



@theNWU



NWU - North-West University

