

DISCOVER NEW FRONTIERS



2025

ORIENTATION PROGRAMME
VAN DER BIJLPARK CAMPUS

DOWNLOAD THE #MYNWU APP

For everything you need to know about
Registration & Orientation



Features

-  NEWS UPDATES
-  ORIENTATION CALENDAR
-  PUSH NOTIFICATIONS
-  STUDENT EVENTS

Available to download on:



TABLE OF CONTENTS



WELCOME TO THE NORTH-WEST UNIVERSITY	<u>PAGE 4</u>
NWU OFFICE BEARERS	<u>PAGE 5</u>
NWU STUDENT LEADERSHIP STRUCTURES	<u>PAGE 6</u>
WELCOME LETTERS	<u>PAGE 8</u>
NWU STUDENT ACCESS CARD	<u>PAGE 11</u>
NWU, VANDERBIJLPARK CAMPUS MAP	<u>PAGE 12</u>
REGISTRATION PERIOD FOR FIRST-YEAR STUDENT	<u>PAGE 15</u>

DATES

SATURDAY, 01 FEBRUARY 2025	<u>PAGE 15</u>
SUNDAY, 02 FEBRUARY 2025	<u>PAGE 16</u>
MONDAY, 03 FEBRUARY 2025	<u>PAGE 16</u>
TUESDAY, 04 FEBRUARY 2025	<u>PAGE 18</u>
WEDNESDAY, 05 FEBRUARY 2025	<u>PAGE 20</u>
THURSDAY, 06 FEBRUARY 2025	<u>PAGE 22</u>
FRIDAY, 07 FEBRUARY 2025	<u>PAGE 25</u>
SATURDAY, 08 FEBRUARY 2025	<u>PAGE 30</u>

North-West University

Bragging rights



Top 7 University

NWU ranks among the top seven South African universities in the 2024 Academic Ranking of World Universities (ARWU).



Top 4.2% world's best universities

The Center for World University Rankings (CWUR) places NWU in the top 4.2% of the world's best universities.



Top 8 universities in Africa

NWU is also recognized as one of the top eight universities in Africa for environmental sustainability.

Find out more: <https://www.nwu.ac.za/rankings>

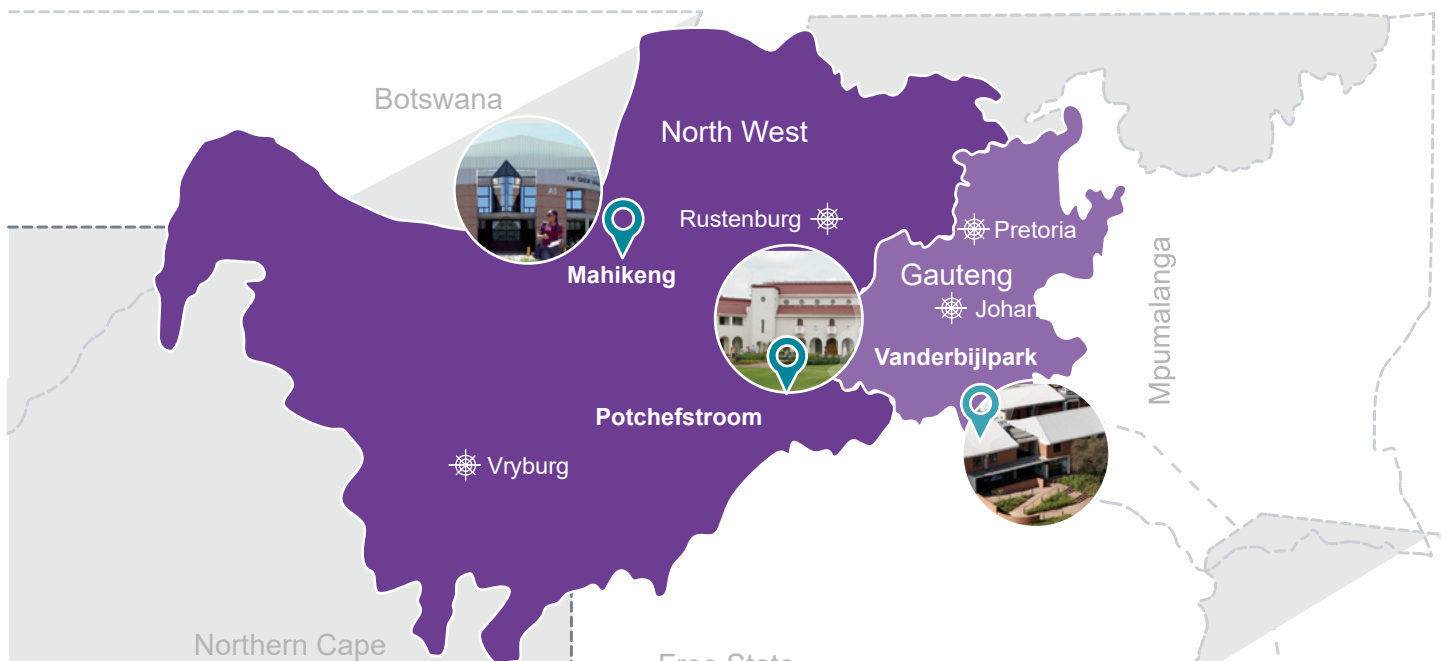
Discover new frontiers at North-West University (NWU) – one of Africa's top universities!
NWU offers a world-class education to an international student body from over 65 countries.

What can NWU offer you?

- Affordable, quality higher education.
- A safe and inclusive teaching and learning environment.
- High rating of employability as a result of our co-curricular offerings.
- Quality expertise with nationally and internationally-rated academics and world-class research facilities.
- Strong co-curricular and vibrant student life.
- Thriving sport – NWU boasts a great sports culture, with successes that have seen us ranked as champions in successive years.

What sets us apart

Our core activities, teaching and learning and research, are intertwined with community engagement and innovation in our eight faculties, most of which serve both distance and contact students.





OFFICE BEARERS

University Management



Dr Anna Mokgokong
Chancellor



Prof Bismark Tyobeka
Principal and Vice-Chancellor



Prof Linda du Plessis
Deputy Vice-Chancellor:
Teaching and Learning | Vice-Principal



Prof Marlene Verhoef
Registrar



Prof Sonia Swanepoel
Deputy Vice-Chancellor:
Community Engagement and
Mahikeng Campus Operations



Prof Daryl Baia
Deputy Vice-Chancellor:
Information Technology and
Potchefstroom Campus Operations



Prof Jeffrey Mphahlele
Deputy Vice-Chancellor:
Research and Innovation



Prof Sibusiso Chalufu
Acting Deputy Vice-Chancellor
(Vanderbijlpark Campus)
Executive Director: Student Life



Mr Clement Manoko
Executive Director:
Corporate Relations and Marketing



Mrs Elmarie de Beer
Executive Director:
Finance and Facilities



Mr Milton Nyamadzawo
Acting Executive Director:
People and Culture

Executive Deans



Prof Babs Surujal
Executive Dean: Faculty of
Economic and
Management Sciences



Prof Lloyd Conley
Executive Dean:
Faculty of Education



Prof Liezi van Dyk
Executive Dean:
Faculty of Engineering



Prof Awie Kotzé
Executive Dean: Faculty
of Health Sciences



Prof Dumi Moyo
Executive Dean:
Faculty of Humanities



Prof Neo Morei
Executive Dean:
Faculty of Law



Prof David Modise
Executive Dean: Faculty of Natural and
Agricultural Sciences

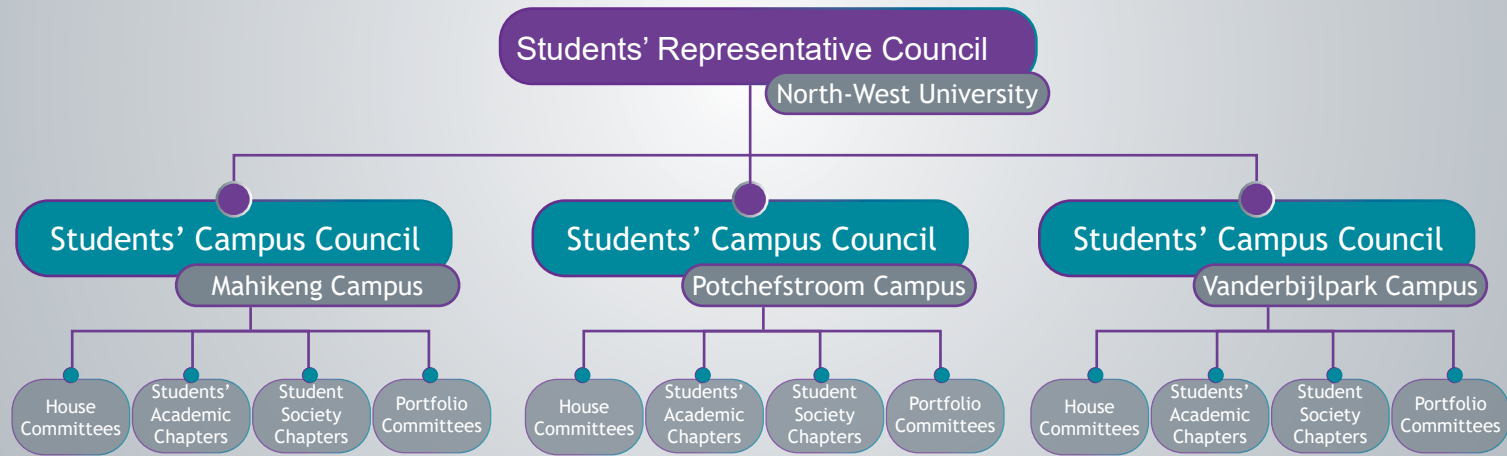


Prof Hennie Goede
Executive Dean:
Faculty of Theology



NWU

Student Leadership Structures



NORTH-WEST UNIVERSITY Students' Representative Council 2024/25



Kamohelo Zwane
SRC: President



Reuben Coetzer
SRC: Deputy-President



Obakeng Sefodi
SRC: Secretary-General



Dean Dube
SRC: Transformation and Diversity
Officer with Current Affairs



Katlego Mmokwa
SRC: Distance Students'
Officer



Celimpilo Manqele
SRC: Academic Officer



Khethiwe Nhlapo
SRC: Arts and Culture Officer



Musa Bizani
SRC: Community and Stake-
holder Engagement Officer



Nomsa Hlongwane
SRC: Fundraising and
Projects Officer



Kgopotso Sekgobela
SRC: Legal Officer



Masego Maboye
SRC: Marketing and Public
Relations Officer



Rebecca Mantso
SRC: Residence Officer
(Acting)



Tshepiso Tau
SRC: Sport Officer



Thabang Mnculwane
SRC: Societies Liaison and
International Students' Officer



Poppy Machete
SRC: Treasurer-General



Kamohelo Zwane
SCC: Chairperson



Celimpilo Manqele
SCC: Deputy-Chairperson



Dean Dube
SCC: Secretary



Busisiwe Nkabinde
SCC: Transformation and Diversity
Officer, with Current Affairs



Kalitso Mandlate
SCC: Academic Officer



Oratilwe Modisane
SCC: Arts and Culture Officer



Neo Gamede
SCC: Community and Stake-
holder Engagement Officer



Boitumelo Sebabe
SCC: Fundraising and RAG
Officer



Samukelo Nkosi
SCC: Legal Officer



Simphiwe Daza
SCC: Marketing and Public
Relations Officer



Quinton Klaas
SCC: Residence Officer



Lwanda Stefaans
SCC: Students' Interest and
Development Officer



Thomas Mazwaya
SCC: Sport Officer



Lovejoy Magezi
SCC: Societies' Liaison and
International Students' Officer



Keamogetswe Khunou
SCC: Treasurer

List of abbreviations

- SRC:** Students' Representative Council
SCC: Students' Campus Council
HC: House Committee
SAC: Students' Academic Chapter
PC: Portfolio Committee

Quick facts on student leadership structures

- The SRC comprised of 15 members representative of each campus.
- The SRC is the highest ranking student leadership structure at the NWU.
- An SCC of 15 members is annually elected for each Campus, with the SCCs being accountable to the SRC.
- House Committees are annually elected for each university residence and day house, per campus.
- Students' Academic Chapters are annually elected for each Faculty, per campus.
- Portfolio Committees assist the SCCs in coordinating Student Life activities.
- Student Society Chapters are annually established for a variety of interest groups including arts and culture, religion, social rights, etc.

Message from

PROF BISMARCK TYOBEKA

PRINCIPAL AND VICE-CHANCELLOR



Dear First-Year Students of 2025

A warm and heartfelt welcome to the North-West University (NWU)! Congratulations on making a life-changing decision to join our vibrant and diverse community. This is the beginning of an extraordinary academic journey, one that will challenge, inspire, and transform you.

As you embark on this new chapter, NWU becomes your home away from home. Here, you will not only receive a world-class education but also gain access to countless opportunities to grow personally and professionally. Our commitment to academic excellence, research innovation, community engagement, and a dynamic Student Life ensures that your time with us will be both enriching and rewarding.

I encourage you to approach the Orientation Programme with enthusiasm and an open mind. This essential phase is designed to help you navigate university life, build meaningful connections, and discover the resources and support systems available to help you thrive. From academic assistance to mental health services and co-curricular activities, we are here to support your success every step of the way.

At the NWU, diversity and inclusion are the cornerstones of our values. Our vibrant campus environment celebrates the richness of different cultures, perspectives, and ideas. Embrace these opportunities to engage with people from all walks of life and prepare yourself for an interconnected, multicultural world. We are unwavering in our commitment to creating a safe, respectful, and inclusive community. Bullying, harassment, racism, and gender-based violence will be met with zero tolerance at NWU, as we remain committed to actively promoting a culture of respect, inclusion, and collaboration.

Your safety and well-being are our priorities, and we continue to enhance measures to ensure that our campuses remain safe and welcoming spaces for all. Remember, you are not alone on this journey. Your peers, lecturers, and support staff are here to guide and encourage you.

As you take your first steps, be inspired by the countless successful graduates who once stood where you are today. Many of them forged lifelong friendships, discovered their passions, and achieved their dreams during their time at the NWU. Now it is your turn to seize the opportunities before you - dive into your studies, participate in student activities, and embrace the adventures that come with university life.

Believe in yourself, cherish the values instilled by your loved ones, and trust in your potential to make a difference. The journey ahead is yours to shape - dream big, work hard, and make your mark.

Welcome to the NWU family! Your story begins here.



Message from
PROF SIBUSISO CHALUFU

**ACTING DEPUTY VICE-CHANCELLOR:
VANDERBIJLPARK CAMPUS OPERATIONS**

Dear First-year Student

Congratulations to each and every one of you for successfully completing your final year of high school! You've officially crossed the threshold into a brand new and exciting chapter of your life, and that's a big deal. Take a moment to pat yourselves on the back because you've earned it and you are now enrolled at one of the top universities in the country.

As the NWU community, we are excited that you have chosen to join us as part of your academic adventure. The value proposition we offer you is quality education and a unique student experience. As you dive into university life, know that we're here to make sure it's nothing short of awesome. From learning new stuff, engaging in community projects and making new friends, there are endless ways to make your time here unforgettable!

Your well-being and safety will always come first, and academic success is central to our mission at the NWU. Creating an inclusive culture is of paramount importance for the NWU! Remember, learning isn't just confined to the classroom. It happens through dialogue, robust debates, daily interactions, and all the cool stuff we have planned for you as part of our vibrant student life.

As a student, you've got to take charge of your learning and time management, and we've got an awesome team here to help you every step of the way. During the Orientation Programme, you will be introduced to all the services we offer to enhance your student experience. We encourage you to explore everything the university has to offer and tap into our services to help you reach your full potential. Please ensure that you attend all the scheduled sessions!

We can't wait to see you leave your mark on our community during your time as a student! We hope that your journey here will be personally and professionally rewarding. Welcome to the NWU family! We can't wait for you to look back at the end of the year and say, "Wow, what a wonderful and successful year it's been!".

Let's make it awesome together!

EXECUTIVE DIRECTOR: STUDENT LIFE

Dear First-year Student

On behalf of NWU Student Life, I would like to welcome you, our First-year Students, and congratulate you on completing your high school education. Through achieving this milestone, you have already displayed great perseverance and dedication towards achieving your full potential – something that will come handy as you continue to discover your bright future ahead.

As Student Life we strive to enable your holistic development by ensuring that you become a well-rounded, innovative, and socially responsible citizen of the world. The NWU is committed to providing a diverse, safe and valuable student experience through a rich variety of co-curricular programmes and activities including arts and culture, sports, student leadership, residence life, student media, health and psycho-social support.

The 2025 Orientation Programme has been planned to assist you in seamlessly joining the NWU community whilst enjoying our vibrant Student Life. It is important that you participate in this programme to ensure that you acquire the necessary skills and information needed to commence with your academic programme, access support services, and embrace co-curricular opportunities and residence life experiences. Acquiring these skills will enable you to navigate your first few months at the NWU with ease, and thereafter successfully complete your academic journey towards graduation!

From today onwards you are part of the NWU community of staff and students who are here to support and guide you every step of the way. I implore you to explore, use and enjoy the wealth of opportunities available to you, remembering that exciting new horizons lie ahead.

I further encourage you to continue to persevere and rise above your circumstances, thereby ensuring that your goals and dreams are realised. Remain confident and know that with our support and encouragement YOU WILL ACHIEVE SUCCESS.

I wish you everything of the best during your time at the NWU – embrace every moment and remember:

"It all starts here®."



Message from
KAMOHELO ZWANE

SRC PRESIDENT

Dear First-year Student

Congratulations on your admission to the North-West University!

On behalf of the Students' Representative Council (SRC) I would like to extend a warm welcome to the North-west University (NWU), congratulations for taking this step towards shaping your future.

As you all begin this journey, I want to assure you that you made an excellent choice in choosing the NWU. The university has a vibrant community, dedicated to academic excellence, transformation and student development. From this point onwards, your campus is known as a home-away-from-home for all students, including our international students.

As the SRC: President, I encourage you to step outside of your comfort zone and explore the various opportunities that Student Life has to offer. Here you will discover many opportunities to participate in the co-curricular activities and our vibrant student life.

The next chapter of your life is the most exciting, and I don't want you to miss out on anything that the NWU has to offer. I highly recommend that you participate in numerous co-curricular activities including sports, arts and culture, student leadership, social engagements, and more. We strive to create an environment where you all will feel valued, supported, and empowered to reach your full potential and soar.

It is important to know that you are not alone as you begin your journey at the NWU. Although you will face challenges during this time, you should not be discouraged because we will be there for you every step of the way. The SRC, student leaders, staff and fellow students are all working together to ensure that you have a memorable and exciting university experience. Please do not hesitate to contact us should you require assistance.

I challenge you to start making a difference here at North-West University and when it's your time to leave, may you leave a better institution than you found it.

"It all starts here®."

NWU STUDENT ACCESS CARD

What is it?

Identity confirmation card declaring you as a student of the NWU.

Collect your Student Access Card from:
Building A25

First Student Access card: Free
Replacement: R80.00



What is it used for?

Your student card provides access to the NWU Campus, including:

- Main gates
- Turnstiles
- General access to buildings
- University residences (only registered residents of the university residence)
- Taking attendance in the class and examination rooms

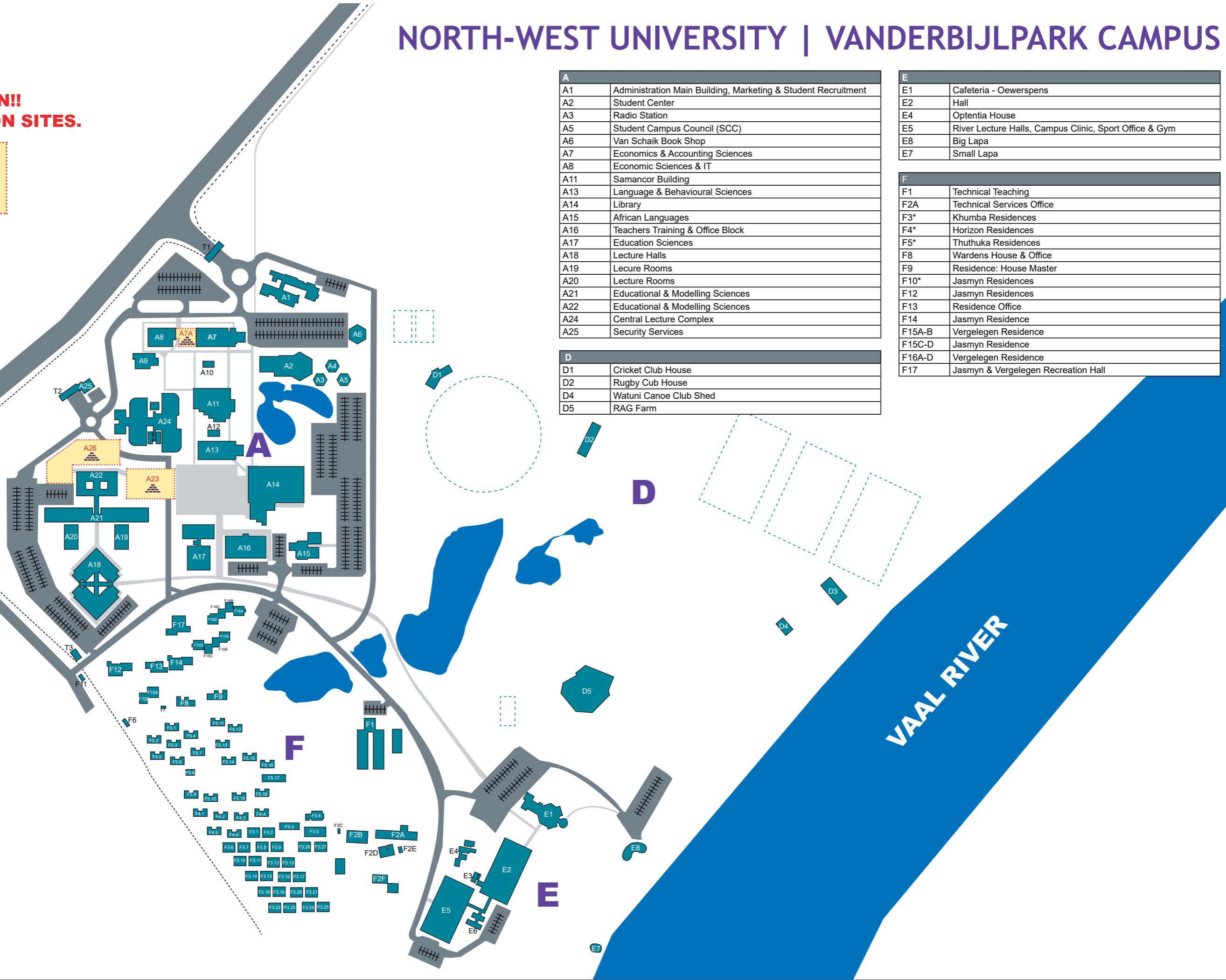
Did you know?

Your student number is automatically generated when you apply at the North-West University. Consecutive numbers differ with a number of 8, e.g. 12345686 will be the follow-up of 12345678. The last two numbers are of such a nature that no two students will have the same first six numbers, e.g. if a number is 12345671 there cannot be a student number 12345679.

[Watch here](#)

NORTH-WEST UNIVERSITY | VANDERBIJLPARK CAMPUS

**CAUTION!!
CONSTRUCTION SITES.**



A	
A1	Administration Main Building, Marketing & Student Recruitment
A2	Student Center
A3	Radio Station
A5	Student Campus Council (SCC)
A6	Van Schaik Book Shop
A7	Economics & Accounting Sciences
A8	Economic Sciences & IT
A11	Samancor Building
A13	Language & Behavioural Sciences
A14	Library
A15	African Languages
A16	Teachers Training & Office Block
A17	Education Sciences
A18	Lecture Halls
A19	Lecture Rooms
A20	Lecture Rooms
A21	Educational & Modelling Sciences
A22	Educational & Modelling Sciences
A24	Central Lecture Complex
A25	Security Services

D	
D1	Cricket Club House
D2	Rugby Cub House
D4	Watuni Canoe Club Shed
D5	RAG Farm

E	
E1	Cafeteria - Oewerspens
E2	Hall
E4	Optentia House
E5	River Lecture Halls, Campus Clinic, Sport Office & Gym
E8	Big Lapa
E7	Small Lapa

F	
F1	Technical Teaching
F2A	Technical Services Office
F3*	Khumba Residences
F4*	Horizon Residences
F5*	Thuthuka Residences
F8	Wardens House & Office
F9	Residence: House Master
F10*	Jasmyn Residences
F12	Jasmyn Residences
F13	Residence Office
F14	Jasmyn Residence
F15A-B	Vergelegen Residence
F15C-D	Jasmyn Residence
F16A-D	Vergelegen Residence
F17	Jasmyn & Vergelegen Recreation Hall

VAN DER BIJLPARK CAMPUS

ORIENTATION PROGRAMME

ARRIVAL OF FIRST-YEAR STUDENTS ON CAMPUSES

30 JANUARY - 01 FEBRUARY 2025

ARRIVAL AND MOVING INTO UNIVERSITY RESIDENCES

08:00-17:00

Students who reside in a University Residence will receive their student access card at the University Residence during the Orientation period as communicated by the relevant House Parent and House Committee members.

University Residence	Venue	Contact Person	Contact Number and Email Address
Bohlale Village	Parking Lot	Ms Thoko Tswaile	083 802 7288 Thoko.tswaile@nwu.ac.za
		Mr Joseph Matlhong	064 191 6121 joseph.matlhong@nwu.ac.za
Ebukhosini Village	Parking Lot	Ms Nthabiseng Maseko	016 910 3041 Nthabiseng.Maseko@nwu.ac.za
Faranani	Recreational Hall	Mr Jan Kruger	016 910 3065 Jan.Kruger@nwu.ac.za
		Ms Monyadiwe Ramatlotlo	016 910 3021 Monyadiwe.Ramatlotlo@nwu.ac.za
Jasmyn	Recreational Hall	Mr Ujeet Maharaj	016 910 3176 Ujeet.maharaj@nwu.ac.za
Kumba	Recreational Hall	Mr Sabelo Chizwina	Sabelo.Chizwina@nwu.ac.za
Longfellow	Parking lot	Mr Makhotsa Mosikidi	016 910 3052 23245344@nwu.ac.za
Moahi Village	Parking lot	Ms Tumi Ledwaba	Tumi.Ledwaba@nwu.ac.za
Thuthuka	Recreation Hall	Mr Puso Kgosinkwe	016 910 3224 Puso.Kgosinkwe@nwu.ac.za
Vergelegen	Recreation Hall	Mr Ujeet Maharaj	016 910 3176 Ujeet.maharaj@nwu.ac.za

30 JANUARY - 02 FEBRUARY 2025

REGISTRATION TO DAY HOUSES

08:00 - 16:30

University Residence	Venue	Contact Person	Contact Person and Email Address
Acacia Ladies' Day House	NWU Cricket Clubhouse	Mr George Sibanyoni	066 247 6043 Figane.Sibanyoni@nwu.ac.za
Oryx Men's Day House			

**Students who form part of Day Houses will receive their student access card at the relevant venue during the Orientation Period as communicated by the relevant House Parent and House Committee members.

SATURDAY, 01 FEBRUARY 2025

WELCOMING EVENTS AT UNIVERSITY RESIDENCES AND DAY HOUSES FOR FIRST-YEAR STUDENTS, PARENTS, GUARDIANS, ETC.

12:00-13:00

12:00-13:00

Welcoming Events at the University Residences and Day House Residences

- Introduction of the House Parent, Residence Officer, and House Committee members.
- Ice breaker games

Venue: refer to venues indicated above

LUNCH

13:00-14:00

**First-year Students, Parents, guardians, etc. may bring their own refreshments to enjoy on campus during lunch.

RESIDENCE LIFE EXPERIENCE PROGRAMME FOR DAY HOUSES

14:00-18:00

14:00-18:00

Battle of the Blocks (Indigenous Games and Board Games Challenge)

Venue: as indicated in the tables above

DINNER

18:00-19:00

19:00-20:00

Residence Culture Education

Venue: Relevant University Residence

20:30-21:00

Debriefing and Well-being Check-in with House Parent, House Committee and Peer Helper

PROGRAMME ENDS

21:00

**In addition to the formal orientation programme indicated in this programme, the Informal Residence Life Experience Programme as approved by the Campus Director: Student Life takes place throughout the period presented to university residence and day house students. The Informal Residence Life Experience Programme may continue until 21:30, as planned by the House Parent and House Committees, and approved by the Campus Director: Student Life. Students who are required to pre-prepare for the Mathematics Induction Courses, and other bridging courses offered by a Faculty may be excused from the informal programmes.

SUNDAY, 02 FEBRUARY 2025

BREAKFAST
06:30-07:45

RESIDENCE LIFE EXPERIENCE PROGRAMME FOR DAY HOUSES 09:00-19:30

10:00-12:00

Residence-based Activities

Venue: Relevant University Residence and Day House venue

12:00-13:00

Welcoming Events at the University Residences and Day House Residences (repeating session)

- Introduction of the House Parent, Residence Officer, and House Committee members.
- Ice breaker games

Venue: as indicated in the tables above

LUNCH
13:30-14:00

14:00-16:00

Residence Life Programme

Venue: Relevant University Residence

DINNER
16:00-19:00

19:00-19:30

Debriefing and Well-being Check-in with House Parent, House Committee and Peer Helper

PROGRAMME ENDS
19:30

MONDAY, 03 FEBRUARY 2025

BREAKFAST
06:30-07:45

08:00-10:00

Information Technology Registration and Onboarding

Venue: Building A17, Lab; Building A21, Rooms 103, 104, 106 and 107

Group 1	
Faculty of Education	Faculty of Law
Faculty of Health Sciences	

08:00-10:00

Library and Information Services

Venue: Building E2, Room G07 - Tsebonokeng Hall

Group 2	
Faculty of Economic and Management Sciences	Faculty of Natural and Agricultural Sciences
Faculty of Humanities	Faculty of Theology

10:00-12:00

Information Technology Registration and Onboarding

Venue: Building A17, Lab; Building A21, Rooms 103, 104, 106 and 107

Group 1	
Faculty of Education	Faculty of Law
Faculty of Health Sciences	

10:00-12:00

Collection of Student Access Cards

Venue: Building A25 Campus - Protection Services

****Students who do not form part of a University Residence of Day House can collect their student access cards from Campus Protection Services.**

LUNCH
12:00-14:00

STUDENT LIFE EXPERIENCE PROGRAMME

14:00-17:00

14:00-16:00

Mathematics Induction Course

Venue: Building A24, Room G02

First-year Students **registered** for the following **programmes** must attend the compulsory

Mathematics Induction Course:

Faculty of Natural and Agricultural Sciences	
<ul style="list-style-type: none"> • Business Analytics (2FR H01 - N301P/V) • Computer Science and Economics (2FF H28 - N301P/V) • Computer Science and Mathematics (2FF H09 - N301P/M/V) • Computer Science and Statistics (2FF H26 - N301P/V) • Financial Mathematics (2FS H01 - N301P/V) 	<ul style="list-style-type: none"> • Information Technology and Computer Science (2DX H01 N302P/V) if MTHS111 is elected • Mathematics and Economics (2FF H29 - N301P/V) • Quantitative Risk Management (2FT H01 - N301P/V) • Statistics and Mathematics (2FG H02 - N301P/V)

Faculty of Humanities

<ul style="list-style-type: none"> • Any Bachelor of Arts Programme with Mathematics as an elective module <p>Students identified by the Admission Office or Faculty Administrative Officer to attend the course</p>
--

14:00-16:00

Auditions Talent show, whereby students that will participate in Orientation Inter-res **Sport day** will be selected

Venue: RAG Farm

****Session attended by Group 1 and Group 2 simultaneously.**

16:00-17:00

Learning the NWU Anthem with Voices of the River Choir

Venue: RAG FARM

****Session attended by Group 1 and Group 2 simultaneously.**

****Buses will depart at 17:00 from RAG FARM parking lot to respective off-campus university residences.**

DINNER
17:00-19:30

RESIDENCE LIFE EXPERIENCE PROGRAMME

19:00-21:00

19:00–19:30

Introduction to University Residence Programmes and Rules

Venue: Relevant University Residence

19:30-20:00

Introduction to House Committee Members: Roles, Functions and Responsibilities

Venue: Relevant University Residence

20:30–21:00

Debriefing and Well-being Check-in with House Parent, House Committee and Peer Helper

PROGRAMME ENDS

21:00

21:00–21:30

Informal Residence Life Experience Programme

TUESDAY, 04 FEBRUARY 2025

BREAKFAST

06:30-07:45

RESIDENCE LIFE EXPERIENCE PROGRAMME

08:00-17:00

08:00–10:00

Information Technology Registration and Onboarding

Venue: Building A17, Lab; Building A21, Rooms 103, 104, 106 and 107

Group 1	
Faculty of Economic and Management Sciences	Faculty of Natural and Agricultural Sciences
Faculty of Humanities	Faculty of Theology

09:00-10:00

Campus Tour

Departure Point: Sports Bar

The following interest points will be visited:

- Cricket Clubhouse and Sports Bar
- Student Counselling and Development
- Career Centre
- Student Centre and ATM's
- Van Schaik Bookstore
- Administration Building
- Main Lecture Halls
- Residence and Catering Services

Group 2	
Faculty of Education	Faculty of Law
Faculty of Health Sciences	-

10:00–12:00

Information Technology Registration and Onboarding

Venue: Building A17, Lab; Building A21, Rooms 103, 104, 106 and 107

Group 2	
Faculty of Education	Faculty of Law
Faculty of Health Sciences	-

11:00-12:00

Campus Tour

Departure Point: Sports Bar

The following interest points will be visited:

- Cricket Clubhouse and Sports Bar
- Student Counselling and Development
- Career Centre
- Student Centre and ATM's
- Van Schaik Bookstore
- Administration Building
- Main Lecture Halls
- Residence and Catering Services

Group 1	
Faculty of Economic and Management Sciences	Faculty of Natural and Agricultural Sciences
Faculty of Humanities	Faculty of Theology

12:00-13:00

How to Access Class - and Examination Timetables

Venue: Building E2, Room G07 - Tsebonokeng Hall

****Session attended by Group 1 and Group 2 simultaneously.**

LUNCH
13:00-14:00

STUDENT LIFE EXPERIENCE PROGRAMME

14:00-17:00

14:00-15:00

Introduction to Student Life Services

- Campus Arts
- Campus Health Care Centre
- Campus Radio Station
- Campus Sport
- Student Counselling and Development

Venue: Building E2, Tsebonokeng Hall

****Session attended by Group 1 and Group 2 simultaneously.**

15:00-16:00

Stress Management Techniques and Strategies

Venue: Building E2, Tsebonokeng Hall

****Session attended by Group 1 and Group 2 simultaneously.**

16:00-17:00

Introduction to the North-West University, Our History, Vision, Mission and Values

Venue: Building E2, Tsebonokeng Hall

****Session attended by Group 1 and Group 2 simultaneously.**

***Buses will depart at 17:00 from RAG FARM parking lot to respective off-campus university residences.*

DINNER
17:00-19:00

RESIDENCE LIFE EXPERIENCE PROGRAMME

19:00-21:00

19:00-20:00

Theme Discussion: Diversity and Inclusivity Awareness, and Wellness and Healthy Lifestyle Choices

Venue: Relevant University Residence

20:00-20:30

Residence-based Activities

Venue: Relevant University Residence

20:30-21:00

Debriefing and Well-being Check-in with House Parent, House Committee and Peer Helper

PROGRAMME ENDS

21:00

21:00-21:30

Informal Residence Life Experience Programme

WEDNESDAY, 05 FEBRUARY 2025

BREAKFAST

06:30-07:45

ORIENTATION PROGRAMME

08:00-17:00

08:30-10:00

LMS Onboarding Training for First-Year Students (eFundi Training)

Venue: Building A17, Lab; Building A21, Rooms 103, 104, 106 and 107

Group 1	
Faculty of Economic and Management Sciences	Faculty of Natural and Agricultural Sciences
Faculty of Humanities	Faculty of Theology

08:30-10:00

Multilingualism at the NWU

Venue: Building E2, Tsebonokeng Hall

Group 2	
Faculty of Education	Faculty of Law
Faculty of Health Sciences	-

10:00-11:30

LMS Onboarding Training for First-Year Students (eFundi Training)

Venue: Building A17, Lab; Building A21, Rooms 103, 104, 106 and 107

Group 2	
Faculty of Education	Faculty of Law
Faculty of Health Sciences	-

10:00-11:30

Adjusting to Higher Education: The Difference Between School and University

Venue: To be confirmed

Group 1	
Faculty of Economic and Management Sciences	Faculty of Natural and Agricultural Sciences
Faculty of Humanities	Faculty of Theology

11:30-13:00

Adjusting to Higher Education: The Difference Between School and University

Venue: To be confirmed

Group 2	
Faculty of Education	Faculty of Law
Faculty of Health Sciences	-

11:30-13:00

Multilingualism at the NWU

Venue: Building E2, Tsebonokeng Hall

Group 1	
Faculty of Economic and Management Sciences	Faculty of Natural and Agricultural Sciences
Faculty of Humanities	Faculty of Theology

11:00-13:00

Collection of Student Access Cards

Venue: Building A25 Campus - Protection Services

***Students who do not form part of a University Residence or Day House can collect their student access cards from Campus Protection Services.*

LUNCH
13:00-14:00

STUDENT LIFE EXPERIENCE PROGRAMME

14:00-17:00

14:00-17:00

Recreational Sport Fair

***First-year students will participate in different sport codes such as netball, soccer, chess, E-Sport and athletics as well as indigenous games.*

Venue: Sport bar Cricket field

***Session attended by Group 1 and Group 2 simultaneously.*

***Buses will depart at 17:00 from Student Centre parking lot to respective off-campus university residences.*

DINNER
17:00-19:00

RESIDENCE LIFE EXPERIENCE PROGRAMME

19:00-21:00

19:00-20:00

Financial Literacy: How to Manage Your Finances and Live on a Budget

Venue: Relevant University Residence

20:00-20:30

Residence-based Activities

Venue: Relevant University Residence

20:30-21:00

Debriefing and Well-being Check-in with House Parent, House Committee and Peer Helper

**PROGRAMME ENDS
21:00**

21:00-21:30

Informal Residence Life Experience Programme

THURSDAY, 06 FEBRUARY 2025

**BREAKFAST
06:30-07:45**

**ORIENTATION PROGRAMME
08:00-17:00**

08:00-10:00

The First-Year Navigator: Your Gateway to Academic Success (during this session the BUSSE survey will also be completed)

Venue: Buildings A17 and Building A21

Group 1	
Faculty of Economic and Management Sciences	Faculty of Natural and Agricultural Sciences
Faculty of Humanities	Faculty of Theology

08:30-10:00

Student Life Expo

Venue: Building E2, Tsebonokeng Hall

Group 2	
Faculty of Education	Faculty of Law
Faculty of Health Sciences	-

10:00-11:30

The First-Year Navigator: Your Gateway to Academic Success (during this session the BUSSE survey will also be completed)

Venue: Buildings A17 and Building A21

Group 2	
Faculty of Education	Faculty of Law
Faculty of Health Sciences	-

10:00-12:00

Student Life Expo

Venue: Building E2, Tsebonokeng Hall

Group 1	
Faculty of Economic and Management Sciences	Faculty of Natural and Agricultural Sciences
Faculty of Humanities	Faculty of Theology

12:00-13:00

First-years' Talent Carnival Auditions

Venue: Building E2, Tsebonokeng Hall

****Session attended by Group 1 and Group 2 simultaneously.**



Don't hesitate to get in touch with us and talk to one of our ambassadors.
We are ready to answer your questions!

Thoughts-and-complaints line: SMS

VAN DER BIJLPARK CAMPUS: 41617

Fraud hotline / reporting email:

report-fraud@nwu.ac.za

WhatsApp line:
+27 (0)60 070 2606



Email:
studies@mynwu.ac.za

SMS line:
41617



Find us on our NWU Website:
studies.nwu.ac.za

LUNCH
12:00-14:00

14:00-17:00

First-years' Talent Carnival Auditions

Venue: Building E2, Tsebonokeng Hall

****Session attended by Group 1 and Group 2 simultaneously.**

***Buses will depart at 17:00 from Student Centre parking lot to respective off-campus university residences.*

DINNER
17:00-19:00

RESIDENCE LIFE EXPERIENCE PROGRAMME
19:00-21:00

19:00-20:00

Residence Life Experience Programme for University Residence

Venue: Relevant University Residence

Theme: Traditions and Anthem

20:30-21:00

Debriefing and Well-being Check-in with House Parent, House Committee and Peer Helper

PROGRAMME ENDS
21:00

****No Informal Residence Life Experience Programme presented on this evening.**



FRIDAY, 07 FEBRUARY 2024

BREAKFAST
06:30-07:45

FACULTY EXPERIENCE PROGRAMME

08:00-13:00

FACULTY OF EDUCATION		
Time	Activity	Venue
Venue allocation		
Foundation Phase Intermediate Phase Senior and FET Phase <i>**Students forming part of the groups indicate above remain in the indicated venue, with presenters rotating between venues.</i>		Building A24, Room G01, G02, G12
08:00-08:15	Welcoming by Deputy Dean	Building A24, Room G01, G02, G12
08:20-09:10	Importance of languages in teacher education	Building A24, Room G01, G02, G12
09:15-10:00	Beehive videos and practise	Building A24, Room G01
	Emergency 911 (Concessions and Psychosocial support)	Building A24, Room G02
	Time Management (Timetables and Exam Timetables – Assessment plans on eFundi)	Building A24, Room G12
10:00-10:20	COMFORT BREAK	
10:20-11:10	Emergency 911 (Concessions and Psychosocial support)	Building A24, Room G01
	Time Management (Timetables and Exam Timetables – Assessment plans on eFundi)	Building A24, Room G02
	Beehive videos and practise	Building C6, Room G07
11:10-11:45	Time Management (Timetables and Exam Timetables – Assessment plans on eFundi)	Building C5, Room G05
	Beehive videos and practise	Building A24, Room G02
	Emergency 911 (Concessions and Psychosocial support)	Building A24, Room G12
11:45-12:30	Student Life in the Faculty: Introduction of the Students' Academic Chapter (SAC)	Building A24
14:00-14:30	10 Golden rules for teachers	Building A24, Room G01
	Grievance procedure	Building A24, Room G02
	TPrac	Building A24, Room G12
14:35-15:05	TPrac	Building A24, Room G01
	10 Golden rules for teachers	Building A24, Room G02
	Grievance procedure	Building A24, Room G12
15:10-15:40	Grievance procedure	Building A24, Room G01
	TPrac	Building A24, Room G02
	10 Golden rules for teachers	Building A24, Room G12
15:45-16:30	Orientation engagement with SAC	Building A24

FACULTY OF ECONOMIC AND MANAGEMENT SCIENCES		
Time	Activity	
CHARTERED AND FORENSIC ACCOUNTANCY		
08:015-08:30	Faculty matters/rules and processes	Building A18, Room G02
08:30-08:45	Opening and Welcoming	
08:45-09:45	Programme Presentation and Q&A: Chartered Accountancy	
09:45-10:00	Comfort break	
FINANCIAL ACCOUNTANCY, MANAGEMENT ACCOUNTANCY AND GENERAL ACCOUNTING STUDENTS		
10:00-10:15	Opening and Welcoming	Building A18, Room G02
10:15-11:15	FA & MA Programme presentation and Q&A	
11:15-11:30	Comfort break	

FACULTY OF ECONOMIC AND MANAGEMENT SCIENCES		
Time	Activity	
CHARTERED-, FINANCIAL, MANAGEMENT-, AND GENERAL ACCOUNTING STUDENTS		
11:30-11:45	The world of entrepreneurship (bhive EDC)	Building A18, Room G02
11:45-12:00	Meet the Student Academic Chapter (SAC – EMS)	
12:00- 13:00	Fun Activity:	
SCHOOL OF ECONOMIC SCIENCES		
08:30-08:45	Opening and Welcome	Building A18, Room G03
08:45-09:00	Programme Presentation: Risk Management	
09:00-09:15	Programme Presentation: Transport Economics	
09:15-09:30	Programme Presentation: Economic Sciences	
09:30-09:45	Programme Presentation: International Trade	
09:45-10:00	Faculty related Rules and Procedures	
10:00-10:15	Q&A Session	
10:15-10:30	Comfort break	
10:30-10:45	How to Read and Write like a University Student	Building A18, Room G03
10:45-10:55	The NWU Learner Management System: eFund	
10:55-11:05	Understanding the Importance of Consultation	
11:05-11:15	Tips and Tricks Towards Preparing for Assessments	
11:15-11:25	Tutors, Supplemental Instructors and Faculty Mentors Introduction to the Students' Academic Chapter (SAC)	Building A18, Room G03
11:25-11:40	Q&A Session	
11:40-12:00	Break	
12:00-12:15	The world of entrepreneurship (bhive EDC)	Building A18, Room G03
12:15-12:30	Pathway to Honours and Postgraduate Studies	
12:30-12:50	Economics General Knowledge Competition and Prize Giving	
12:50-13:00	Conclusion and Closing Remarks	
SCHOOL OF MANAGEMENT SCIENCES		
08:30-08:45	Opening, Welcome and Overview	Building A18, Room G01
08:45-09:15	<ul style="list-style-type: none"> • Programme Introductions and Orientation: • Marketing Management • Business Management • Sport Management and Safety Management 	
09:15-09:40	Faculty Relates Rules and Process Allocation of Teams for Amazing Race.	
09:40-09:50	The world of entrepreneurship (bhive EDC)	
09:50-10:00	Meet the Students' Academic Chapter (SAC)	
10:00-13:00	Amazing Race	
SCHOOL OF INDUSTRIAL PSYCHOLOGY AND HUMAN RESOURCE MANAGEMENT		
08:15-08:30	Opening and Welcome	Building A18, Room G04
08:30-09:00	Overview of School of Industrial Psychology and Human Resource Management	
09:00-10:30	Outlining the Differences between Programmes	
10:30-11:00	Expectations and Responsibilities	
11:00-11:30	Faculty related Rules and Processes	
11:30-11:45	The world of entrepreneurship (bhive EDC)	
11:45-12:00	Comfort break	
12:00-12:30	How Assessments Work	Building A18, Room G04
12:30-13:00	Academic Support available in the School and University Introduction to Professional Bodies and F-EMS Student Academic Chapter	

FACULTY OF ECONOMIC AND MANAGEMENT SCIENCES		
Time	Activity	
13:45-14:00	Entrepreneurship	Building A18, Room G04
14:00-14:30	Path to Postgraduate Studies	
14:30-15:30	Team Building Activity	

FACULTY OF HEALTH SCIENCES		
TIME	DESCRIPTION	VENUE
Faculty of Health Science students are allocated to the following venues for orientation purposes:		
Social Work		Building A20, Room G01
Psychology		Building A20, Room G02
08:00-12:00	<ul style="list-style-type: none"> Faculty Welcoming and Information Session Faculty Specific Terminology Academic & University Terminology Programme Outlay Module outcomes, names and abbreviations Academic Rules Timetables, assessments and schedules Tour your classrooms and laboratories 	Venues indicated above
12:00-13:00	Introduction to Faculty of Health Sciences Students' Academic Chapter	Venues indicated above
14:00-16:00	Student Administration Assistance **Students who have registration questions or queries have an opportunity to meet with the respective Programme Leaders. Contact the Academic Advisor.	https://health-sciences.nwu.ac.za/academic-advisors OR Psychology: Building 07, Room108C Social Work: Building 9A

FACULTY OF HUMANITIES		
TIME	DESCRIPTION	VENUE
08:00-08:30	Welcoming message from Deputy Dean: Research and Innovation	Building A14
08:30-09:00	Introduction to the Faculty Humanities: Deputy/ School Directors	Building A14
09:00-09:30	Introduction to the Faculty of Humanities Students' Academic Chapter	Building A14
10:00-10:30	<i>Get to Know your Faculty and Student Academic Lifecycle Administration</i>	Building A14
10:30-10:45	<i>Comfort Break</i>	
**Students divide into relevant Faculty School Groups		
10:45-13:00	School of Government Studies	Building A14
	School of Communication	Building A14
	School of Languages	Building A14
	School of Philosophy	Building A14
	School of Social Sciences	Building A14

FACULTY OF LAW		
TIME	DESCRIPTION	VENUE
08:00-08:30	Introduction to Faculty Management Committee and First-year Module Lecturers	Building A7, Room B03
08:30-10:00	Curriculum Information Session	
10:00-11:15	Academic Orientation Sessions and Processes: Deputy Director Undergraduate Studies	
11:15-11:30	Comfort break	
11:30-13:00	Academic Ethics and Integrity within the Faculty Context	Building A7, Room B03
14:00-15:30	Faculty Mentoring and Tutoring Programme for First-year Students	
15:30-16:30	Introduction to F-LAW Students' Academic Chapter	



It's more than a greeting!

The #NWUEagles see language as a bridge instead of a barrier. We like talking to one another and use different languages to understand each other. Along the way, we broaden our horizons and make each other feel a little more welcome.

It all starts here® ... with a hello!



FACULTY OF NATURAL AND AGRICULTURAL SCIENCES		
TIME	DESCRIPTION	VENUE
08:00-08:15	Arrival of students and venue allocation	Building A18, Room G02
08:15-08:30	Welcoming message from Executive Dean and senior staff	Building A18, Room G02
08:30-09:30	Introduction to the Faculty Processes and Important Information	
09:30-09:45	Comfort break	
09:45-13:00	Introduction and engagements with F-NAS Students' Academic Chapter	Building A18, Room G02
14:00-16:00	Registration Amendment Assistance <i>**Students who have registration questions or queries have an opportunity to meet with the respective Programme Leaders. Contact the Academic Advisor.</i>	Building A18, Room G02

FACULTY OF THEOLOGY		
TIME	DESCRIPTION	VENUE
08:00-08:30	Faculty Welcoming and Introduction	Building A19, Room G02
08:30-09:00	Diversity of Faculty and Theological Paradigms	
09:00-09:30	Introduction to Theology Qualifications, Career and Academic Opportunities	
09:30-10:15	Academic Orientation on Computers and Computer Programmes	
10:15-11:00	Academic Writing Style, Study Methods, Faculty Specific Terminology	
11:00-12:00	Curriculum Amendments	
12:00-13:00	Library Introduction	
14:00-16:30	Introduction to F-THEO Students' Academic Chapter	

***Buses will depart at 17:00 from RAG FARM parking lot to respective off-campus university residences.*

DINNER
17:30-19:00

RESIDENCE LIFE EXPERIENCE PROGRAMME
19:00-21:00

19:00–20:30

Introduction to Students' Campus Council Guardians

Venue: Relevant University Residence

20:30–21:00

Debriefing and Well-being Check-in with House Parent, House Committee and Peer Helper

PROGRAMME ENDS
21:00

21:00-21:30

Informal Residence Life Experience Programme

CAMPUS WELCOMING DAY

SATURDAY, 08 FEBRUARY 2024

CAMPUS WELCOMING EVENT FOR FIRST-YEAR STUDENTS

10:00-12:00

Venue: Building E2, Tsebonokeng Hall
All First-year students will attend this session.

Programme Event	Presenter
Welcoming and Introduction	-
Message from Students' Campus Council Chairperson	Mr Kamohelo Zwane
<i>Entertainment</i>	-
Message from Students' Representative Council President (virtual)	Mr Kamohelo Zwane
Message from Campus Director: Student Life	Mr Chris Williams
Message from Executive Director: Student Life	Prof Sibusiso Chalufu
<i>Entertainment</i>	-
Message from Acting Deputy-Vice Chancellor of the Vanderbijlpark Campus	Prof Sibusiso Chalufu
Message from Vice-Chancellor and Principal	Prof Bismark Tyobeka
<i>University Anthem</i>	-

LUNCH

12:00-14:00

STUDENT LIFE EXPERIENCE PROGRAMME

14:00-22:00

14:00-17:00

First-years' Talent Carnival

Venue: RAG FARM

17:00 – 22:00

First-years' Pre-Freshers

Venue: RAG FARM

**Buses will depart at 22:00 from RAG FARM parking lot to respective off-campus university residences.

FORMAL ORIENTATION PROGRAMME CONCLUDES

21:00

INFORMAL ORIENTATION AND CO-CURRICULAR PROGRAMME

10-15 FEBRUARY 2025

**Informed by the progress made with regards to First-year Student registration and arrival at campus, an Informal Orientation and Co-Curricular programme will be presented to First-year students from 10-15 February 2025. The programme will be developed and approved by the relevant Campus Director: Student Life, within the following framework:

Description	Time	Date
Informal Orientation and Co-Curricular Programme <ul style="list-style-type: none"> University Residences and Day Houses Private Students (where relevant) 	19:00-22:00	10 February 2025
		11 February 2025
		12 February 2025
		13 February 2025
	19:00-00:00	14 February 2025
-	15 February 2025	

More information on the Informal Orientation and Co-Curricular Programme will be communicated directly to First-year Students.

Got a question? Get in touch!



0860 169698 (0860 1mynwu) - Toll free



studies@nwu.ac.za



+27 (0) 60 070 2606



341617

Join our online NWU Family!



NWU - North-West University



North-West University



North-West University



theNWU



@theNWU



NWU - North-West University

