

#MYNWU

GUIDE/GIDS/TATAISO

2020



It all starts here®

welcome to

NWU

It all starts here[®]



44 742

(On campus/contact)



24 087

(distance learning)



47 217

Women
(contact and distance)



21 612

Men
(contact and distance)



The NWU's (Norh-West University) core activities, teaching-learning and research, are intertwined with community engagement and innovation on our three campuses which serve both distance and contact students.



8 FACULTIES

Health Sciences

Law

Theology

Humanities

Engineering

Education

Natural and Agricultural Sciences

Economic and Management

NWU OFFICE BEARERS / AMPSDRAERS



Dr Anna Mokgokong
Chancellor / Kanselier



Prof Dan Kgwadi
Vice-Chancellor and Principal /
Visekanselier en Prinsipaal



Prof Linda du Plessis
Vice-Principal and Deputy Vice-
Chancellor: Planning and Campus
Operations Vanderbijlpark campus /
Adjunk-visekanselier: Toewysbare Funksies
en Vanderbijlparkkampusbedryf



Prof Marlene Verhoef
Registrar / Registrateur



Prof Marilyn Settlaentoa
Deputy Vice-Chancellor:
Community Engagement and
Campus Operations Mahikeng Campus /
Adjunk-visekanselier: Toewysbare
Funksies en Mahikengkampusbedryf



Prof Daryl Balla
Deputy Vice-Chancellor:
Information Technology and
Campus Operations Potchefstroom Campus /
Adjunk-visekanselier:
Toewysbare Funksies en
Potchefstroomkampusbedryf



Prof Refilwe Phaswana-Mafuya
Deputy Vice-Chancellor:
Research and Innovation /
Adjunk-visekanselier: Navorsing en Innovasie



Prof Robert Balfour
Deputy Vice-Chancellor:
Teaching and Learning /
Adjunk-visekanselier: Onderrig en Leer



Mr/Mnr Clement Manoko
Executive Director:
Corporate Relations and Marketing /
Uitvoerende Direkteur: Korporatiewe
Verhoudinge en Bemarking



Ms/Me Elmarie de Beer
Executive Director:
Finance and Facilities /
Uitvoerende Direkteur: Finansies en
Fasiliteite



Dr Mala Singh
Executive Director:
People and Culture /
Uitvoerende Direkteur: Mense en Kultuur



Dr Sibusiso Chalufu
Executive Director:
Student Life /
Uitvoerende Direkteur: Studentelewe

STUDENT CAMPUS COUNCIL / KAMPUSTUDENTERAAD 2019/2020 VANDERBIJLPARK



Teboho Siziba
Chairperson/
Voorsitter



Mpho Tlhalefo
Deputy Chairperson/
Ondervoorsitter



Khotsofala Ramasilo
Secretary General/
Sekretaris-Generaal



Lutendo Mathivha
PRO and Projects Officer/
Openbare Betrekkinge en
Projekbeampte



Siyabonga Tshabalala
Current Affairs Officer /
Aktuele Sake beampte



Mitchelle Nhacuongue
Fundraising Officer/
Fondsinsamelingsbeampte



Marley Phaswana
Treasurer/
Tesourier



Ntandokazi Gumedi
Legal Officer/
Regsbeampte



Anelisa Tole
Community and
Stakeholders Engagement
Officer/
Gemeenskapsbetrokken-
heid en Belanghebbendes



**Phumulani Pandora
Ndllovu**
Residence Officer/
Koshuisbeampte



Sheriff Ramphele
Council of Societies
Officer/
Verenigingsskakel-
beampte



Siyabonga Hlophe
Academics Officer/
Akademiese beampte



Tebogo Morake
Arts and Culture Officer/
Kuns en Kultuurbeampte



Tinashe Nzombe
International Students
Officer/ Internasionaal en
Afstandstudente



**Tshelang Shirley
Mosokwene**
Sports Officer/
Sportbeampte



Bless Us, Oh Lord

Translation

Bokone Bophirima *North-West*
 Re kaêlê Morêna *Guide us oh Lord*
 Ka wêna re ka êma *With you we can stand firm*
 Ra tshwarana *And be united*

Ao, Morêna *Oh Lord*
 O re gôgê *Please guide us*
 Leseding re gôrôgê *So we reach where light is.*

Waar die wilgers welig spruit, *Where willows grow abundantly*
 Doringboom sy skadu spreï *Where thorn trees spread there shade*
 Soos ons groei in kundigheid *While we grow in knowledge*
 Mag U ons lei *May You give us guidance*

Seën ons, o Heer *Bless us, Lord,*
 Lei met U hand *Guide with Your hand*
 Laat U seën rus oor ons land *Grant Your blessings o'er our land.*

Three strong streams united flow *Three strong streams united flow*
 Africa stands proud and tall *Africa stands proud and tall*
 As we learn, we trust, we know *As we learn, we trust, we know*
 God is in control *God is in control*

Bless us, oh Lord *Bless us, oh Lord*
 Guide us with grace *Guide us with grace*
 May North-West be blessed always *May North-West be blessed always*

Bless us, oh Lord *Bless us, oh Lord*
 Seën ons, o Heer *Bless us, oh Lord*
 O re tshegofatse *Bless us*
 Morena *Lord*
 Seën ons *Bless us*
 Bless us, oh Lord *Bless us, oh Lord*

Lyrics: Theriso Tsambo, Comeels Schabort

Music: Katlego Maboe, Michael de Villiers, Stefan Pretorius, Niekie van der Walt, Johan Venter • Arrangement: Christa Steyn

National Anthem

English translation

Nkosi sikelel' Afrika
 Maluphakanyisw' uphondo lwayo,
 Yizwa imithandazo yethu,
 Nkosi sikelela, thina lusapho lwayo. (Xhosa and Zulu)

Lord bless Africa
 May her glory be lifted high,
 Hear our prayers
 Lord bless us, your children.

Morena boloka setjhaba sa heso,
 O fedise dintwa le matshwenyeho,
 O se boloke, O se boloke setjhaba sa heso,
 Setjhaba sa South Afrika - South Afrika. (Sesotho)

Lord we ask your to protect our nation,
 Intervene and end all conflicts,
 protect us, Protect our nation,
 Protect South Africa, South Africa.

Uit die blou van onse hemel,
 Uit die diepte van ons see,
 Oor ons ewige gebergtes,
 Waar die kranse antwoord gee, (Afrikaans)

Out of the blue of our heavens,
 Out of the depths of our seas,
 Over everlasting mountains,
 Where the echoing crags resound

Sounds the call to come together,
 And united we shall stand,
 Let us live and strive for freedom,
 In South Africa our land. (English)

Sounds the call to come together,
 And united we shall stand,
 Let us live and strive for freedom,
 In South Africa our land.



PROF DAN KGWADI

WISEKANSELIER | VICE-CHANCELLOR | MOTLATSAMOKANSELIRI

Boodskap van Visekanselier aan eerstejaarstudente 2020

Baie welkom by die Noordwes-Universiteit! Ons wil jou hier laat tuis voel en ons wil hê jy moet 'n sukses maak van hierdie gedeelte van jou opvoeding.

Die Registrasie en Oriënteringsprogram is ontwerp om jou toetred tot die NWU te vergemaklik. Dit is belangrik om te besef dat jy nuwe verantwoordelikhede sal moet aanvaar en baie meer selfstandig sal moet word as dit waaraan jy dalk gewoond was tot nou toe.

Diversiteit en insluiting is sleutelfasette van die studentenervaring by die NWU en ons diens word aangebied binne 'n sorgsaamheidsetiek. Hier is dus geen toleransie vir enige vorm van ontgroeningspraktyke, gedrag wat indruis teen ons verbintenis tot menseregte, enige vorm van teistering, en geslagsgebaseerde geweld nie.

Ons rol as akademiese en ondersteuningspersoneel van die NWU is om jou op jou akademiese reis te ondersteun. Maak asseblief gebruik van al die hulpbronne tot jou beskikking om hierdie reis so glad moontlik te laat verloop.

Leer ken jou medestudente en wees deel van die studenteleeu in al sy fasette. Moet nooit dink dat dit net vir ander mense bedoel is nie - gryp elke geleentheid aan wat die NWU bied.

Daar sal baie afleidings wees, maar onthou dat jou akademiese sukses altyd prioriteit moet geniet. Ons wil hê jy moet suksesvol wees, maar jy moet verantwoordelikheid daarvoor aanvaar. As die klasse begin, bly gefokus, en neem met oorgawe deel.

Onthou, dit begin alles hier.

My beste wense vergesel elke eerstejaarstudent vir 'n suksesvolle jaar en verblyf by die NWU.

Message from Vice-Chancellor to first-year students 2020

A warm welcome to all of you to the North-West University! Our aim is to make you feel at home here and for you to make a success of your education.

This Reception and Orientation programme is designed to equip you to adapt as quickly as possible to life at NWU. It is important to realise that you will need to accept new responsibilities and develop much greater self-reliance than you may have been used to in the past.

Diversity and inclusion are key facets of the student experience at NWU and our service is offered within an ethic of care. This means that we have zero tolerance for any form of initiation practices, behavior which contradicts our commitment to human rights, any form of harassment or gender based violence.

Our role as academic and support staff of NWU is to assist you on your journey. Please access the many resources that are available to make this journey as smooth as possible.

Engage with fellow-students and be part of student life in all its many facets. Never think that this is only meant for others - make sure that you take every opportunity that the NWU offers.

There will be many distractions, but remember that your academic success should take priority. We want you to succeed, but you have to take responsibility for this. When classes commence, stay focused, participate diligently and engage fully.

Remember, it all starts here.

My best wishes accompany each and every first-year for a successful year and stay at NWU.

Molaetsa wa Motlatsa-Mochanselara ho baithuti ba selemong sa pele ka 2020

Re le amohela ka mofuthu kaofela ha lona kwano Univesithi ya North-West. Sepheo sa rona ke hore le ikutwe le phuthulohile le hore le atlehe dithutong tsa lona.

Lenaneo lena la Kamohelo le ho le Tlwaetsa Sebaka le etseditsewe ho le hlomella hore le tlwaele bophelo ba NWU kapele kamoo le ka kgonang. Ke habohlokwa ho lemoha hore le tla lokela ho amohela boikarabelo bo botjha le ho lwanela ho itjara ho feta leha e le neng pele.

Ho se tshwane le ho amohela ditso tse ding ke karolo ya bohlokwa ya boiphihlelo ba baithuti mona NWU mme re latela melao ya boitshwaro ha re fana ka tsebeletso ya rona. Sena se bolela hore ho hang ha re mamelle diketso tsa ho tshwara baithuti ba fihlang hampe, boitshwaro bo kgahlanong le boitlamo ba rona ka ditokelo tsa botho, tlhekefetso leha e le efe kapa ho tshwara batho ba bong bo itseng ka mabifi.

Boikarabelo ba rona re le basebetsi ba fanang ka thuto le tshetso ba NWU ke ho le thusa leetong lena la lona. Ka kopo sebedisang disebediswa tse ngata tse fumanehang kwano e le hore leeto la lona le thelle ka hohle kamoo ho ka kgonehang.

E bang le ditherisano le baithuti mmoho le lona mme le be karolo ya bophelo ba baithuti dikarolong tsohle tsa bona. Le ka mohla le se ke la nahana hore sena se ama ba bang e seng lona - etsang bonnete ba hore le sebedisa monyetla o mong le o mong oo NWU e fanang ka ona.

Ditshitiso di tla ba ngata, feela hopolang hore kattleho ya lona dithutong e lokela ho tla pele ho tsohle. Re batla hore le atlehe, empa le lokela ho jara boikarabelo ba sena. Ha ditlase di qala, tsepamisang mehopolu, nkang karolo ka tjheseho le ho ithukubetsa.

Hopolang, tsohle di qala mona!

Ke lakaetsa moithuti e mong le e mong ya selemong sa pele kattleho selemong sena le hore a dule hantle NWU.

PROF LINDA DU PLESSIS

ADJUNK-UISEKANSIELIER | DEPUTY VICE-CHANCELLOR |
MOTHUSA MOTLATSAMOKANSELERI

Boodskap van prof Linda du Plessis, Adjunk- Visekanselier vir beplanning en kampusbedrywighede in Vanderbijlpark

Dit is vir my aangenaam om jou by die Noordwes-Universiteit (NWU) se kampus in Vanderbijlpark te verwelkom. Jy sal met my saamstem dat dit sonder twyfel een van die mooiste universiteitskampusse in Suid-Afrika is – dalk selfs die héél mooiste een.

As 'n geregistreerde student is jy deel van ons hegte kampusgemeenskap; 'n gemeenskap wat nie net uitnemendheid vier nie, maar ook die rykdom van kulturele diversiteit, die vryheid van akademiese ondersoek en die gees van innovasie. Ons kampus verteenwoordig 'n trotse multikulturele en meertalige omgewing en ek raai jou aan om hierdie unieke studentekultuur jou eie te maak.

Bevestig jou deel-wees van ons gesin deur proaktief nuwe vriende te maak, gebruik te maak van ons nuwe en unieke hulpbronne en met oorgawe deel te neem aan alle aktiwiteite op kampus. Dit is hier, op die oewer van die magtige Vaalrivier, waar jy gaan begin om lewenslange vriendskappe te smee en gaan begin soek na maniere om jou dae vol te maak. Geniet hierdie vryheid met verantwoordelikheid.

Laat my toe om jou raad te gee oor hoe om jou band met die NWU te vier: deel jou begrip en entoesiasme met ander mense; daag jouself elke dag uit; benut elke oomblik met passie en vasberadenheid; absorbeer elke ervaring. En, geniet dit!

Dit is die NWU se droom om 'n internasionaal erkende universiteit in Afrika te wees wat bekend is vir sy wetenskapsbeoefening, maatskaplike responsiwiteit en sorgsaamheidsetiek. Ek sien daarna uit om saam met jou te werk aan die verwesenliking van hierdie droom en om die NWU in die proses 'n sterker, meer verenigde universiteit te maak. Soos ons slagspreuk tereg sê: dit begin alles hier!

Message from Prof Linda du Plessis, Deputy Vice- Chancellor for planning and campus operations in Vanderbijlpark

It gives me great pleasure to welcome you to the North-West University's (NWU's) campus in Vanderbijlpark. You will agree with me, that this is without a doubt one of the most beautiful - if not the most beautiful, university campuses in South Africa.

As a registered student you are part of our close-knit campus community; a community that not only celebrates excellence but also the richness of cultural diversity, the freedom of academic inquiry and the spirit of innovation. Our campus represents a proud multi-cultural and multilingual environment and I want to advise you to embrace this unique student culture.

Solidify your membership to our family by proactively meeting new friends, tapping into our novel and tailor-made resources and joining, wholeheartedly, in all activities on campus. It is here, on the banks of the mighty Vaal River, that you will start building lifelong friendships and start to explore ways to fill out your days. Enjoy this freedom responsibly.

Allow me to share with you some advice on how to best celebrate your association with the NWU: share your understanding and enthusiasm with others; challenge yourself on a daily basis; embrace each moment with sheer passion and determination and absorb every experience. And, have fun!

It is the NWU's dream to be an internationally recognised university in Africa, distinguished for engaged scholarship, social responsiveness and an ethic of care. I am looking forward to working alongside you to realise this dream and in the process make the NWU a stronger, more united university. As our payoff line so rightly states: it all starts here!

Molaetsa o tswang ho Moprofesa Linda du Plessis, letsoho la Motlatsa-Mochanselara wa thero le tshebetso ya khamphase ya Vanderbijlpark

Ke thabo e kgolo ho nna ho le amohela kwano khamphaseng ya Univesithi ya North-West (di-NWU) e Vanderbijlpark. Le tla dumellana le nna ntle ho qeaqeo hore ena ke e nngwe ya dikhamphase tse ntle haholo - haeba ha se yona e ntle ho di feta mona Afrika Borwa.

Jwaloka moithuti ya ngodisitsweng, o karolo ya bathuti ba momahaneng ba khamphaseng mona; bathuti ba sa thabelang katleho feela empa ba boetseng ba thabelang ho se tshwane ha ditso ho teng, tokoloho ya ho botsa ka dithuto hammoho le moya wa ho hlaha ka tsebo e ntjha. Khamphase ya rona e motlotlo ka ho ba le bathuti ba tswang ditsong tse sa tshwaneng le ba buang dipuo tse sa tshwaneng mme ke le eletsa hore le amohela ho se tshwane hona ho ikgethang ha bathuti.

Matlafatsang ho ba ha lona karolo ya lelapa lena la rona ka ho ikitlaetsa hore le be le metswalle e metjha, ka ho sebedisa ka botlalo disebediswa tsa rona tsa setlabo tjha tse entsweng ka morero le ho nka karolo ka ho feletseng dinthong tsohle tse etswang khamphaseng. Ke hona mona le bopong la Noka e kgolo ya Lekwa moo le tla etsa metswalle ya bophelo bohle le ho qala ho hlahloba dintho tseo le ka di etsang ho phetha letsatsi. Thabelang tokoloho ena ka tsela e bontshang boikarabelo.

E re ke le eletse tabeng ya hore na le ka thabela ho ba mona NWU jwang: arolelanang le ba bang tsebo le tjheseho ya lona; lekang bokgoni ba lona ka hohle kamoo le ka kgonang letsatsi le leng le le leng; ebang ba tjhesehang le ba ikemiseditseng ho sebedisa motsotso o mong le o mong mme le thabele ntho e nngwe le e nngwe eo le e etsang. Thabelang ho ba mona!

Ke takatso ya NWU ke hore dinaha tsohle di nke univesithi ena e le e tsebahalang Afrika, e ikgethang ka ho fana ka ditlhapiso bakeng sa thuto, ho hlabolla setjhaba hammoho le ho ba e tsotellang. Ke shebile pele ho sebetso le lona hore toro ena e phethahale ha ka lehlakoreng le leng NWU e ntse e ba univesithi e matla, e momahaneng. Jwalo kaha lepetjo la rona le bua ka nepo: tsohle di qala hona mona!

DR SIBUSISO CHALUFU

UITVOERENDE DIREKTEUR STUDENTELEWE | EXECUTIVE DIRECTOR STUDENT LIFE | MOKAEDI MOKHUDUTHAMAGA BOPHELO JWA BAITHUTI

Namens NWU Studentelewe verwelkom ek graag al die eerstejaarstudente. Jy het inderdaad 'n goeie besluit geneem om die Noordwes-Universiteit as jou tweede tuiste te kies. Ons rol in Studentelewe is om by te dra tot jou holistiese ontwikkeling 'n goed afgeronde, innoverende en sosiaal verantwoordelike burger en leier en om te verseker dat jy 'n wonderlike studente-ervaring by die NWU sal hê.

Van vandag af is jy deel van die NWU-gemeenskap en ons personeel en medestudente is hier om jou te ondersteun en te begelei op jou reis. Die Registrasie- en Oriënteringsprogram is ontwerp om jou met die nodige vaardighede en inligting toe te rus om jou reis by die NWU suksesvol te voltooi, in die akademiese sowel as die ko-kurrikulêre omgewing.

Die NWU is verbind tot 'n veilige, diverse en waardevolle studentelewe-ervaring wat dit vir elke individu moontlik maak om sy of haar volle potensiaal te bereik. Ons bied 'n ryke verskeidenheid ko-kurrikulêre programme en aktiwiteite aan wat insluit kuns en kultuur, sport, studenteleierskap, koshuislewe, studentemedia, studentegesondheid en voorligtingsdienste. Ek wil julle graag motiveer om alle beskikbare geleenthede ten volle te benut en te geniet.

Ons is hier om jou te ondersteun en te motiveer. Dit is egter 'n gedeelde verantwoordelikheid en jy sal eienaarskap moet neem om sukses te verseker. Deur die loop van die volgende aantal weke en jare by die NWU sal talle geleenthede en uitdagings na jou kant toe kom wat uiteindelik help om jou as individu te vorm. Dit sal dalk aanvanklik soos 'n onbegonne taak lyk, maar JY SAL SUKSES BEHAAL deur volharding en harde werk.

Ek wens jou alles van die beste toe vir jou tydjie by die NWU – maak goed gebruik van hierdie tyd en onthou: "Dit begin alles hier."

On behalf of NWU Student Life, I would like to extend my personal welcome to each and every First Year Student. You have indeed made the best decision in choosing the North-West University as your new home-away-from-home! Our role in Student Life is to contribute towards your holistic development as a well-rounded, innovative and socially responsible global citizen and leader and to ensure that you have a rich and fruitful student experience at the NWU.

From today onwards, you are part of the NWU community and our staff and fellow students are here to support and guide you on your journey. The Registration and Orientation Programme is designed to equip you with the necessary skills and information to successfully navigate and complete your journey at the NWU, both within the academic and co-curricular environment.

The NWU is committed to providing a safe, diverse and valuable student life experience that allows each individual the opportunity to reach their full potential. We offer a rich variety of co-curricular programmes and activities that include offerings in arts and culture, sports, student leadership, residence life, student media, student health and counselling services. I would like to motivate you to fully explore, participate and enjoy the wealth of opportunities available to you.

Throughout your journey we are here to support and motivate you, but this remains a shared responsibility requiring you to take full ownership to ensure success. During the course of the next few weeks and years that you will spend at the NWU, you will be faced with numerous opportunities and challenges that will shape you as an individual. Though this may at first seem to be a daunting task, YOU WILL ACHIEVE SUCCESS through perseverance and hard work.

I wish you everything of the best during your stay at the NWU - please make the best of your time and remember: "It all starts here."

Lebitsong la Bophelo ba Moithuti ba NWU, ke rata ho amohela ka mofuthu Moithuti e mong le e mong ya Selemong sa Pele. Ruri le entse qeto e ntle ka ho fetisisa ka ho kgetha Univesithi ya North-West hore e be lehae la lona le letjha hole le hae! Boikarabelo ba rona ho Bophelo ba Moithuti ke ho tlatsetsa ntshetsopeleng ya lona e feletseng jwaloka baahi le baetapele ba lefatsho ba kwetlisiseng hantle, ba tlang ka mekgwa e metjha ya ho etsa dintho le ba nang le boikarabelo setjhabeng, le ho netefatsa hore le ba le boiphihlelo bo enneng le bo le tswelang molemo kwano NWU.

Ho tloha kajeno ho ya pele, le karolo ya baithuti ba NWU mme basebetsi ba rona le baithuti mmoho le lona ba teng mona ho le tshheheta le ho le tataisa leetong lena la lona. Lenaneo la Ngodiso le ho Tlwaetswa Sebaka le reretswe ho le hlomella ka ditsebo le tlhahisoleseding e hlokahalang e le hore le tsamaye leeto lena la lona la NWU le ho le phetha ka katleho, diithutong tsa lona hammoho le dinthong tse ding tse etswang tse tsamaisanang le dithuto.

NWU e ikemiseditse ho fana ka boiphihlelo bo sireletsehileng, bo papafapaneng le boo e leng ba bohlokwa bophelong ba moithuti bo etsang hore e mong le e mong a be le monyetla wa ho finyella bokgoni bohle ba hae. Re fana ka mananeo le mesebetsi e sa tshwaneng e akarelletsang tsa bonono le setso, dipapadi, boetapele ba baithuti, bophelo ba moo baithuti ba dulang, bophatlalatsi ba baithuti, bophelo bo botle ba baithuti le ditshebetso tsa tlhabollo. Ke le kgothalletsa hore ka hohlehohe le batisise, le nke karolo le ho thabela menyetta ena e mengata e le bulehetseng.

Re mona ho le tshheheta le ho le susumetsa leetong lohle la lona, empa bona ke boikarabelo ba rona le ba lona, bo hlokang hore le nke boikarabelo bo feletseng ho netefatsa hore le a atleha. Dibekeng tse mmalwa tse tlang le dilemong tseo le tla di qeta mona NWU, le tla tobana le menyetta e mengata le diphephetso tse tla le bopa le le batho ka bomong. Le hoja qalong seo se ka shebahala se tshosa, LE TLA FINYELLA KATLEHO haeba le mamella le ho sebetsa ka thata.

Ke le lakaletsa sohle se molemo nakong eo le tla e qeta mona NWU – ka kopo etsang hore nako ya lona kwano e be e molemo ka ho fetisisa mme hopolang: "Tsohle di qala mona."

HEINZ SCHOEMAN-STRUWIG

VSR-VOORSITTER | SRC PRESIDENT | MOPERESIDENTE WA SRC

As Voorsitter van die Verteenwoordigende Studenteraad verwelkom ek jou graag by die Noordwes-Universiteit.

Hier by die NWU bied ons jou meer as net 'n internasionaal erkende graad – maar ook 'n onvergeetlike studente-ervaring. Hierdie studentelewe het 'n redelik eenvoudige grondslag: ons aanbod is deur studente, vir studente! Dit word bereik deur die oorbrugging van ideologiese verskille in 'n sorgsame kultuur van begrip, respek, en eenheid.

Dit beteken dat ons as studenteleiers poog om verantwoordbaar, toeganklik, geïntegreerd en relevant te wees – en ek nooi jou om ons aanspreeklik te hou vir daardie belofte. Word deel van 'n verenigde visie wat ons erfenis vier, maar laat ook ruimte vir diversiteit en groei. Maak jouself beskikbaar vir die studentelewe deur jou stem te laat hoor en 'n erfenis hier agter te laat.

Raak betrokke by die vorming van die toekoms van studente-identiteit en onthou altyd: "Niks vir die studente, sônder die studente nie!"

As the Student Representative Council President, I wish you a warm welcome to the North-West University.

At the NWU we offer you more than just an internationally recognized degree – but also an unforgettable student experience. This student life has a rather simple foundation, and that is that our offerings are by students, for students! This is achieved via bridging ideological divides in a caring culture of understanding, respect, and unity.

That means that as student leaders we aim to be responsive, approachable, integrated and relevant – and I invite you to hold us accountable for that promise. Become involved in a united vision that celebrates heritage but also makes space for diversity and growth. Make yourself available to student life by having your voice heard, and leaving your legacy with us.

Become a part of shaping the future of student identity and never forget: "Nothing for students, without students!"

Jwaloka Mopresidente wa Lekgotla la Khamphase ya Baithuti, ke le amohela ka mofuthu kwano Univesithing ya North-West.

Mona NWU ha re fane feela ka lengolo la thuto e phahameng le amohelehang matjhabeng – empa re boetse re fana ka boiphihlelo boo baithuti ba ke keng ba bo lebala lekgale. Bophelo bona ba Moithuti bo na le motheo o bonolo, mme ke wa hore seo re fanang ke sona se tswa ho baithuti, mme ke bakeng sa baithuti! Sena se finyella ka ho kopanya maikutlo a fapaneng tiwaelong eo re nang le yona ya ho tsotella ho ba ba utlwisang, ba hlomphang le ba nang le bonngwe.

Sena se bolela hore re le baetapele ba baithuti re ikemiseditse ho ba ba nkang kgato, ba atamelehang, ba momahaneng le ba tshwanelehang – mme ke le kopa hore le re nke re ikarabella bakeng sa tshetso eo. Nkang karolo ponelopeleng e kopanetsweng e ketekang lefa la rona empa e boetse e re fa monyetla wa ho ba ba fapafapaneng le ba hatelang pele. Iketseng ba fumanehang Bopelong ba Moithuti ka ho ntsha lentse, mme le re siele lefa.

E bang karolo ya ba bopang bokamoso ba boitsebahatso ba moithuti mme le ka mohla le se ke la lebala: "Ka ntle ho baithuti, ha ho letho bakeng sa baithuti!"

TEBOHO SIZIBA

KSR-PRESIDENT | SCC PRESIDENT | MOPERESIDENTE WA SCC

Beste studente

As Voorsitter van die Kampusstudenterraad, ook bekend as die KSR, is dit vir my 'n plesier om julle by die Noordwes-Universiteit te verwelkom. Geluk dat julle so hard gewerk het dat julle gekwalifiseer het om by een van die top vyf universiteite in Suid-Afrika te studeer. Dit is 'n voorreg om betrokke te kan wees by hierdie prestige-universiteit bekend as die NWU.

Dit is nie maklik om toegang te kry tot 'n universiteit nie. Julle verteenwoordig dus die room van die oes – die klein persentasie van skoolverlaters wat die geleentheid kry om hoër onderwys te betree. Maak ten volle gebruik van hierdie geleentheid om jou studies voort te sit en te verseker dat jy jou familie en jousef trots maak. Werk aan iets groots, bly gefokus op jou studies en bereik jou doelwitte.

Nuwelingstudente kom voor allerlei uitdagings te staan, maar hierdie uitdagings help jou uiteindelik om jou volle potensiaal as mens te bereik.

Gedurende jou drie/vier jaar op universiteit sal jy persoonlik en professioneel gevorm word en aangesien sommige uitdagings jou sal toerus vir die werkplek, is dit belangrik om elke uitdaging aan te gryp tydens jou studiejare.

Universiteit sal jou leer om die regte balans te vind tussen jou akademiese, persoonlike en sosiale lewe. Dit is dus belangrik om jousef te omring met mense wat jou visie deel en wat nie sal probeer om jou te verander of te beïnvloed om iemand te word wat jy nie is nie. Onthou altyd, bly getrou aan jousef, akademie kom eerste, en ons het studentestudentdienste as jy ooit sukkel met jou studies of om aan te pas by die nuwe omgewing.

Mag jou reis so suksesvol en produktief wees as wat jy wil hê dit moet wees.

Dear students

As the Chairperson of the Student Campus Council, also known as the SCC, it is with great joy that I welcome you to the North-West University. Congratulations on working hard enough to make the cut, enabling you to study at the one of the top five ranked universities in South Africa. It is a privilege to be a member of this prestigious university known as the NWU.

Gaining access into a university is not easy. You therefore represent the crème of the crop - the top percentile of school-leavers afforded the opportunity to enter into higher education. May you appreciate and take advantage of the opportunities that lie ahead in furthering your studies, thereby ensuring that you not only make your family proud, but also yourself. Work towards something greater, stay focused on your studies and reach your goals.

First-time entering students experience numerous challenges during their time at university, but it is these challenges that enable you to reach your full potential.

During your three/four years at university, you will be moulded both personally and professionally, as some challenges you face will equip for the workplace, it is important that you embrace each challenge during your time here.

University will teach you how to balance your academics, personal and social life. Therefore, it is important that you associate yourself with people who understand you and your vision, and not people who try to change or influence you into becoming someone you are not. Reminder: stay true to who you are, academics come first, and we have student support services who will assist you if you struggle with your studies or adapting to your new environment.

May your journey be as fruitful as you desire it to be.

Baithuti ba ratehang

Jwaloka Modulasetulo wa Lekgotla la Khamphase ya Baithuti leo hape le tsejwang e le SCC, ke thabo e kgolo ho nna ho le amohela mona Univesithing ya North-West. Re a le thoholetsa hore ebe le sebeditse ka thata hore le fihle mona moo le teng ho tla ithuta Univesithing e balwang ho tse 5 Tse Ipabolang kwano Afrika Borwa. Ke tokelo ho ba setho sa univesithi ena e nkelwang hodimo e tsejwang e le NWU.

Ha ho bonolo ho kena univesithi, re se re sa bue ka Univesithi ena ya North West, ka hona le emela baithuti ba bohlahe haholo, baithuti ba ka hodimodimo ba qetileng sekolo yaba ba fuwa monyetla wa ho fumana thuto e phahameng. E se e ka le ka ananela monyetla oo le o filwang le ho o sebedisa ho ntshetsa dithuto tsa lona pele le ho etsa bonnete ba hore lona, hammoho le malapa a lona, le ikotla sefuba. Sebeletsang ho finyella se sehola, tsepamisang dikelelo tsa lona dithutong mme le finyelle dintho tseo le ikemiseditseng ho di finyella.

Hangata baithuti ba batjha univesithi ba teana le diphephetso, mme dintho tsena ke karolo ya tse tla le thusa hore le peseletse le ho finyella seo le ka se kgonang, ditshitiso tsena di tla le thusa hore le iteke ka matla ho bona hore na le ka fella hokae.

Dilemong tse tharo/nne tseo le tla di qeta mona univesithi, botho ba lona le tsebo ya lona di tla kwetliswa, mme diphephetso tse ding tseo le tla kopana le tsona di tla le hlomella hore le lokele boemo ba mosebetsi, ka hona ke habohlokwa hore le amohela phephetso e nngwe le e nngwe eo le teanang le yona dilemong tseo le tla di qeta mona univesithi.

Univesithi e tla le ruta ho lekalekanya taba ya dithuto, bophelo ba lona le boithabiso, ka hona, ke ha bohlokwa hore le tlwaelane le batho ba utlwisang sepheo sa lona mme ba se ke ba leka ho le fetola kapa ho le susumetsa hore le be seo le seng sona. Hopolang : le se ke la fetoha, dithuto di tla pele mme re na le ditshebeletso tsa ho tshehetsa baithuti haeba le hula ka thata tabeng ya sekolo kapa ya ho tlwaela sebaka se setjha.

E se e ka leeto lena la lona le ka le tswela molemo jwalo feela kaha le lakatsa hore ho be jwalo.

NWU

STUDENT CARD



What is it?

Identity confirmation card declaring you as a current full-time registered student at NWU

What is it used for?

Your student card provides access to the NWU's Vanderbijlpark campus:

- Main gates
- Turnstiles
- Residences

(only registered residents of the residence)

Taking attendance in the class and examination rooms.

Did you know?

The student number is automatically generated by the system. Consecutive numbers differs with a number of 8 (e.g. 12345686 will be the follow-up of 12345678). The last two numbers are of such a nature that no two students will have the same first seven numbers (e.g. if a number is 12345671 there cannot be a student number 12345679).

There is a bar in Mozambique (Ponta de Ora), Fernandos, where it is tradition to put your student card up against the wall when you visit.

NWU

On Social Media



Get the latest news, events and activities by liking our page! Don't forget to use **#MYNWU** when posting. [@NWUNorthWestUniversity](#)



Share your unique NWU experience with us by using **#MYNWU**. Follow us [@my_nwu](#)



Connect with us on a professional level. [North-West University/ Noordwes-Universiteit](#)



Follow us [@theNWU](#) and don't forget our hashtag when tweeting - **#MYNWU**



REGISTRATION AND ORIENTATION PROGRAMME (R&O) 2020

- It is compulsory for all first year students to participate in the orientation programme.
- **Web Registration (20-24 January 2020)** - First year students may only register on the web after curriculum control has been done on the mentioned dates below.
- Please go to this link for more information about the registration:
<http://studies.nwu.ac.za/studies/registrations>

MONDAY 20 JANUARY

All students and parents to first attend the Reception before registration.

08:00-09:00 FIRST YEARS RECEPTION (Big Lapa)

Welcome by the Executive Director: Corporate Relations and Marketing	Mr Clement Manoko
Prayer and scripture reading by Member of University Council	Fr David Dinkebogile
The SCC Chairperson introduces Members of the SCC and the SRC President	Mr Tebogo Siziba
Message from the SRC President	Mr Heinz Schoeman-Struwig
Message from the Vice-Chancellor and Principal	Prof Dan Kgwadi
Vote of thanks from the Deputy Vice-Chancellor: Planning and Campus Operations of the Vanderbijlpark Campus	Prof Linda Du Plessis

08:30-16:30 (Registration Building 6) REGISTRATION

All students to assemble at the Registration Building.

All students scheduled to register in the indicated programmes below:

- Students are advised to follow the Student Campus Council's (SCC's) guidance before proceeding.
- Once registration has been completed, students may proceed to collect their study guides in building 25.

PROGRAMME	FACULTY
All Programmes	Education
All Programmes	Law
All Programmes	Natural & Agricultural Sciences

13:00-14:00 LUNCH

16:30 BUSES DEPART FROM BIG LAPA

RESIDENCE PROGRAMME

18:00-19:00
KNOW YOUR HOUSE COMMITTEE AND HOUSE PARENT
All students to assemble at the residences.

19:00-20:00 DINNER

20:00-22:00
CARNIVAL PRACTICE
All students to assemble at the residences.

22:00 PROGRAMME ENDS

TUESDAY 21 JANUARY 2020

All students and parents to first attend the Reception before registration.

08:00-09:00 FIRST YEARS RECEPTION (Big Lapa)

Welcome by the Executive Director: Corporate Relations and Marketing	Mr Clement Manoko
Prayer and scripture reading by Member of University Council	Fr David Dinkebogile
The SCC Chairperson introduces Members of the SCC and the SRC President	Mr Tebogo Siziba
Message from the SRC President	Mr Heinz Schoeman-Struwig
Message from the Vice-Chancellor and Principal	Prof Dan Kgwadi
Vote of thanks from the Deputy Vice-Chancellor: Planning and Campus Operations of the Vanderbijlpark Campus	Prof Linda Du Plessis

08:30-16:30 (Registration Building 6) REGISTRATION

All students to assemble at the Registration Building.

All students scheduled to register in the indicated programmes below:

- Students are advised to follow the Student Campus Council's (SCC's) guidance before proceeding.
- Once registration has been completed, students may proceed to collect their study guides in building 25.

PROGRAMME	FACULTY
All Programmes	Economic and Management Sciences and all BA Programmes

08:00-13:00 (Building 12 room G03)

All students under the Natural & Agricultural Sciences Faculty to attend faculty based activities.

08:00-10:00 (Building 25 room G03)

All students under the Law Faculty to attend faculty based activities.

08:30-13:00

(Building 12 room G02 and Building 9C room G02)

All students under the Faculty of Education to attend faculty based activities.

08:30-10:00 Building 12 room G02 and Building 9C room G02	Welcome by the faculty management
---	-----------------------------------

10:00-13:00 Building 9A rooms 103,104,106 & 107 Building 13 rooms K4 & K10	IT registration
---	-----------------

13:00-14:00
LUNCH

14:00-16:00
TAG & TALL TEST

All students from the following faculties to attend:

ENGLISH (TALL TEST)	VENUE
Education	Building 24 room G67
Law	Building 25 room G08
Natural and Agricultural Sciences	Building 25 room G01

AFRIKAANS (TAG TEST)	Building 25 room G03
-----------------------------	----------------------

SESOTHO TEST	Building 25 room G06
---------------------	----------------------

16:30
BUSES DEPART FROM BIG LAPA TO RESIDENCES

RESIDENCE PROGRAMME

18:00-19:00
TEAM BUILDING ACTIVITIES
All students to assemble at the residences.

19:00-20:00
DINNER

20:00-22:00
CARNIVAL PRACTICE
All students to assemble at the residences.

22:00
PROGRAMME ENDS

WEDNESDAY 22 JANUARY

All students and parents to first attend the Reception before registration.

08:00-09:00
FIRST YEARS RECEPTION (Big Lapa)

Welcome by the Executive Director: Corporate Relations and Marketing	Mr Clement Manoko
Prayer and scripture reading by Member of University Council	Fr David Dinkebogile
The SCC Chairperson introduces Members of the SCC and the SRC President	Mr Tebogo Siziba
Message from the SRC President	Mr Heinz Schoeman-Struwig
Message from the Vice-Chancellor and Principal	Prof Dan Kgwadi
Vote of thanks from the Deputy Vice-Chancellor: Planning and Campus Operations of the Vanderbijlpark Campus	Prof Linda Du Plessis

08:30-16:30 (Building 6)
REGISTRATION
All students to assemble at the Registration Building.

All students scheduled to register in the indicated programmes below:

- Students are advised to follow the Student Campus Council's (SCC's) guidance before proceeding.
- Once registration has been completed, students may proceed to collect their study guides at General Academic Building.

PROGRAMME	FACULTY
All Programmes	Humanities
All Programmes	Theology
All Programmes	Health Sciences BSW (Social Work)

All students from the Faculty of Education to attend Faculty-based activities:

08:00-13:00
(Building 12 room G02 and Building 9C room G02)
TOPIC: WIL, POP and excursions

08:00-13:00 (Building 12 room G06)
All students from the Faculty of Law to attend faculty-based activities:

08:00-09:00	FMC introduction by slides/video
09:00-10:00	LSC - Law student life (Law faculty, Moots, Black Lawyers Association SC, Students for Law and Social Justice, and LSC)
10:00-11:00	Ninette Crous - Legal Writing Test
11:15-12:00	Executive Dean Welcome
12:00-13:00	Career Option.

08:00-13:00 (Building 12 room G03)
All students from the Faculty of Natural & Agricultural Sciences to attend faculty based activities:

<p>Student Chapter Introductions (students are split into three groups):</p> <ul style="list-style-type: none"> - Geo- and Spatial Sciences - Mathematical and Statistical Sciences & BMI - Computer Science and Information Systems <p>Welcoming by the Executive Dean FNAS Academic Structure Presentation: Directors and Subject Chairs (students are split into three groups):</p> <ul style="list-style-type: none"> - Geo- and Spatial Sciences - Mathematical and Statistical Sciences & BMI - Computer Science and Information Systems <p>BREAK</p> <p>Study Methods (a lecturer from each respective school to present an interactive session). Students are split into three groups:</p> <ul style="list-style-type: none"> - Geo- and Spatial Sciences - Mathematical and Statistical Sciences & BMI - Computer Science and Information Systems

08:00-13:00
All students from the Faculty of Economic & Management Sciences to attend faculty based activities:

08:00-11:00	Topic:	Presenters
Building 12 rooms G01, G04 & G05	For your safety <ul style="list-style-type: none"> • Self defence • Awareness • Online safety 	Drs William van Blerk & Charles van der Vyver

IT REGISTRATION 11:00-13:00 Building 9A rooms 103, 104,106 & 107 Building 13 rooms K4, K10 & 301

13:00-14:00 (Student Centre)
LUNCH

14:00-16:00
TAG & TALL TEST

All students from the following faculties to attend:
• Economic & Management Sciences.

BUILDING	ACTIVITY
Building 9B rooms G01 & G02 Building 9C room G01	Afrikaans (TAG TEST)
Building 12 rooms G01, G04 & G05	English (TALL TEST)
Building 12 room G02	Sesotho

14:00-15:30 (Building 24 room G67 and Building 25 rooms G01 & G08)

UPSET Research Focus Area

All students from the following Faculties to Attend:

- Education
- Law
- Natural & Agricultural Sciences

16:30

BUSES DEPART FROM BIG LAPA TO RESIDENCES

RESIDENCE PROGRAMME

18:00-19:00

HUMAN RIGHTS AWARENESS

All students to assemble at the residences.

19:00-20:00

DINNER

20:00-22:00

CARNIVAL PRACTICE

All students to assemble at their respective residences

22:00

PROGRAMME ENDS

THURSDAY 23 JANUARY

08:00-13:00 (Building 12 G01 & G04)

FACULTY BASED PROGRAMMES

All students from the Faculty of Humanities to attend faculty based activities:

TIME	DESCRIPTION
09:00-10:00	Welcome to Humanities
10:00-11:00	Moving from school to university
11:00-12:00	Multilingualism awareness
12:00-13:00	Faculty Rules and procedures

08:00-13:00 (Building 13 room K04)

All students from the Faculty of Theology to attend Faculty-based activities:

IT REGISTRATION

08:00-13:00 (Building 9A room 104)

All students from the Faculty of Health Sciences to attend the Faculty-based programme:

SCHOOL	TOPIC
Social Work & Psychology	Student Chapter introduction and welcoming
	Academic structure presentation

	First year booklet will be distributed
	Career and academic opportunities
	Faculty specific terminology
	(School / subject group specific terminology)

08:00-13:00

All students from the Faculty of Education to attend faculty based activities.

TOPIC: Important aspects of becoming an excellent teacher

08:00-13:00

Building 9A rooms 103,104,106 & 107
Building 13 room K10

eFundi (Introduction to eFundi)

Learn how to navigate the learning management systems of the NWU

Practice submitting assignments

Completing tests and finding course content.

First Years' Navigator (Navigate your way to Success)

Find out about all academic, social and general support on campus.

BUSSE (Beginning University Survey of Student Engagement)

The BUSSE measures entering first-year students' pre-university academic and co-curricular experiences and their expectations regarding participation in educationally purposeful activities during their first year.

08:00-13:00 (Building 25 room G03)

All students from the Faculty of Law to attend faculty based activities:

08:00-09:00	Ethic
09:00-10:00	Faculty Projects
10:00-11:00	Critical Thinking
11:15-13:00	Law Student Life

08:00-13:00 (Building 12 room G03)

All students from the Faculty of Natural & Agricultural Sciences to attend faculty based activities:

TIME	TOPIC
08:00	Welcoming and outline of day's proceedings
08:15	Faculty specific terminology
09:45	Academic Writing Styles
11:45	Career and Academic Opportunities within the Faculty and Industry

08:00-13:00 (Building 24 room G67 and Building 25 rooms G01 & G08)

All students from the Faculty of Economic and Management Sciences to attend faculty-based activities:

TIME	TOPIC (FOR YOURSELF)	PRESENTERS
08:00-09:00	Budgeting and Finances	Prof Thys Swanepoel
09:00-10:00	Ethics	Dr Verona Leendertz
10:00-12:00	eFundi & First year navigator	Elne van Niekerk
12:00-13:00	Social media	Koos de Villiers

13:00-14:00

LUNCH



we care about

YOU!

What do we believe?

We as a community of university students believe in a learning environment based on transparency and accountability.



FREEDOM

Everyone has the right to freedom and security, which includes physical and psychological integrity, as well as freedom of expression, religion and association.



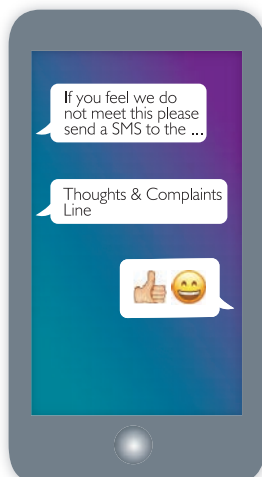
EQUALITY

At the NWU we deem all students equal, irrespective of race, sex, colour, sexual orientation, age, disability, religion, culture or language.



HUMAN DIGNITY

Every individual has an inherent dignity and the right to have that dignity respected and protected.



Therefore:

- Therefore we believe that no-one may be subjected to any treatment that makes him/her feel inferior.
- We regard every life as worthy of protection and create conditions for life that make living worthwhile.
- Every individual is entitled to privacy in his/her personal and student life, and his/her dignity as a humanbeing may not be violated.

Mahikeng Campus - 34151

Potchefstroom Campus - 31750

Vandebijlpark Campus - 41617

DOES THE NWU MAKE YOU...



send an sms to

41617



We receive it
on a database



Anonymity
will be upheld



We provide feedback
on messages received



14:00-16:30

TAG & TALL TEST

All students from the following faculties to attend:

- Humanities
- Theology
- Health Sciences

BUILDING	ACTIVITY
Building 9B rooms G01 & G02 Building 9C room G01	Afrikaans (TAG TEST)
Building 12 rooms G01, G04 & G05 Building 12 room G02	English (TALL TEST) Sesotho

14:00-16:30 (Big Lapa)

UNITS WITHIN STUDENT LIFE

All students from the following Faculties to attend:

- Economic & Management Sciences
- Education
- Law
- Natural & Agricultural Sciences

14:10-14:25	Office of the Director
14:25-14:45	Clinic
14:45-15:00	Arts and Culture
15:00-15:15	Radio Station
15:15-15:30	Sports
15:30-16:30	Student Counselling and Development

16:30

BUSES DEPART FROM BIG LAPA TO RESIDENCES

18:00-19:00

EDUCATIONAL TALK: GENDER BASED VIOLENCE & LGBTQIA+ RIGHT AWARENESS

All students to assemble at the residences.

19:00-20:00

DINNER

20:00-22:00

CARNIVAL PRACTICE

All students to assemble at their respective residences.

22:00

PROGRAMME ENDS

FRIDAY 24 JANUARY

08:00-13:00

(Building 12 room G02 and Building 9C room G02)

All students from the Faculty of Education to attend faculty based activities.

TOPIC: Self-Directed Learning & Role of Reflection & Academic Success.

08:00-13:00 (Building 25 room G03)

All students from the Faculty of Law to attend faculty based activities:

TIME	TOPIC
08:00-09:00	How to take notes
09:00-10:00	Intro First Year Lectures
10:00-11:00	Legal Reading Test
11:15-12:00	Realities of Rape
12:00-13:00	Law Commission Symposium on the Law related Issues

08:00-13:00 (Building 12 room G03)

All students from the Faculty of Natural and Agricultural Sciences to attend Faculty-based activities:

TIME	TOPIC	VENUE
08:30-10:30	FNAS Tours: Faculty Facilities	Building 12 room G03

08:00-13:00 (Building 24 room G67 and Building 25 rooms G01 & G08)

All students from the Faculty of Economic and Management Sciences to attend Faculty-based activities:

TOPIC	PRESENTERS
For your first year · Study tips · Time management · Group work · Health	Dr Jurie van Niekerk

09:00-13:00 (Building 12 rooms G01 & G04)

All students from the Faculty of Humanities to attend Faculty-based activities:

TIME	TOPIC
09:00-10:00	Humanities & The Future
10:00-11:00	Diversity Awareness
11:00-13:00	Academic Integrity

08:00-13:00

All students from the Faculty of Theology to attend Faculty-based activities:

08:00-13:00 Building 13 room K4
eFundi (Introduction to eFundi) Learn how to navigate the learning management systems of the NWU Practice submitting assignments Completing tests and finding course content.
First Years' Navigator (Navigate your way to Success) Find out about all academic, social and general support on campus.
BUSSE (Beginning University Survey of Student Engagement) The BUSSE measures entering first-year students' pre-university academic and co-curricular experiences and their expectations regarding participation in educationally purposeful activities during their first year.

08:00-13:00 (Building 9A room 104)

All students from the Faculty of Health Sciences to attend Faculty-based activities:

SCHOOL	TOPIC
Social Work & Psychology	Simulation activities (School / subject group specific)
All subject groups in Building 9B room G04	Presentation by Centre for Teaching and Learning: First year experience

13:00-14:00

LUNCH

14:00-16:00

UPSET RESEARCH FOCUS GROUP

All students from the following faculties to attend:

FACULTY	VENUE
Economic Management Sciences	Building 24 room G67
Humanities	
Health Sciences	Building 25 rooms G01, G03, G06, G07, G08 & G09
Theology	

14:00-16:00

IT REGISTRATION

All students from the following faculties to attend:

FACULTY	VENUE
Law	Building 9A rooms 103, 104, 106 & 107
Natural and Agricultural Sciences	
Education	Building 13 rooms K4, K10 & 301

16:30

BUSES DEPART FROM BIG LAPA TO RESIDENCES

RESIDENCE PROGRAMME

18:00-19:00

EDUCATIONAL TALK ON RESIDENCE RULES.

All students to assemble at the residences.

19:00-20:00

DINNER

20:00-22:00

CARNIVAL PRACTICE

All students to assemble at their respective residences.

22:00

PROGRAMME ENDS

SATURDAY 25 JANUARY

08:30-15:00

REACH OUT AND GIVE

SPORTS DAY

All students to attend.

13:00-14:00

LUNCH

15:00

BUSES DEPART TO RESIDENCES

19:00-20:00

DINNER

20:00

CARNIVAL PRACTICE

All students to assemble at the residences.

22:00

PROGRAMME ENDS

SUNDAY 26 JANUARY

08:00-09:00

BREAKFAST

09:00-13:00

SING-ALONG FESTIVAL (STUDENT LIFE AND SCC)

13:00-14:00

LUNCH GRAB & GO

Buses depart to residences

19:00-20:00

DINNER

20:00

CARNIVAL PRACTICE

All students to assemble at their respective residences

22:00

PROGRAMME ENDS

MONDAY 27 JANUARY

All students from the Faculty of Education to attend Faculty-based activities:

08:00-13:00

(Building 12 room G02 and Building 9C room G02)

All students from the Faculty of Education to attend faculty based activities.

Topic: Reflecting on social justice and diversity

08:00-13:00 (Building 25 Room G03)

All students from the Faculty of Law to attend faculty based activities:

TIME	TOPIC
08:00-09:00	Welcome & Explain Process
09:00-13:00	Selection Test

08:00-13:00

All students from the Faculty of Economic and Management Sciences to attend CTL:

09:00-13:00 (Building 9A rooms 103, 104, 106 & 107 and Building 13 rooms K4, K10 & 301)

<p>eFundi (Introduction to eFundi) Learn how to navigate the learning management systems of the NWU Practice submitting assignments Completing tests and finding course content.</p>
<p>First Years' Navigator (Navigate your way to Success) Find out about all academic, social and general support on campus.</p>
<p>BUSSE (Beginning University Survey of Student Engagement) The BUSSE measures entering first-year students' pre-university academic and co-curricular experiences and their expectations regarding participation in educationally purposeful activities during their first year.</p>

08:00-13:00

All students from the Faculty of Humanities to attend Faculty-based activities:

School Specific Day
Building 12 room G01 - School of Social Sciences
Building 12 room G04 - School of Philosophy
Building 12 room G05- School of Government Studies
Building 31 room G10 School of Communication
Building 31 room G02 - School of Languages

08:00-13:00 (Building 12 room G03)

All students from the Faculty of Health Sciences to attend Faculty-based activities:

SCHOOL	TOPIC
Social Work Psychology	Faculty tour: Student Chapter committee members split students into groups and show them specific venues relevant to their field of study.

08:00-13:00 (Building 9A room 102)

All students from the Faculty of Theology to attend faculty based activities:

08:00-09:30	Conversation: Freedom at last! Or not?
11:30-13:00	Gender equality

13:00-14:00 (Student Centre)

LUNCH

14:00-16:30

IT REGISTRATION

All students from the following faculties to attend:

FACULTY	VENUE
Humanities	Building 9A rooms 103, 104, 106 & 107 and Building 13 rooms K4, K10 & 301
Theology	
Health Sciences	

14:00-16:00 (Building 13)

LIBRARY TOURS

Students from the following Faculties to attend:

- Economic and Management Sciences

14:00-16:00

CAMPUS TOURS

Students from the following Faculties to attend:

- Natural and Agricultural Sciences
- Law
- Education

16:30

BUSES DEPART FROM BIG LAPA TO RESIDENCES

RESIDENCE PROGRAMME

18:00-19:30

MY FIRST YEAR INSPIRATION

(House Committee & House-Parent)

All students to assemble at the residences.

20:00-22:00

CARNIVAL PRACTICE

All students to assemble at the residences.

22:00

PROGRAMME ENDS

TUESDAY 28 JANUARY

08:00-13:00 (Building 12 rooms G01 & G04)

All students from the Faculty of Humanities to attend based programmes:

TIME	DESCRIPTION
08:00-10:00	Academic Student Association
10:00-11:00	Academic life versus social life
11:00-13:00	Putting the week in perspective and Inspirational conclusion

08:00-13:00 (Building 9A room 102)

All students from the Faculty of Theology to attend Faculty-based activities.

TOPIC
Word of Welcome
Introduction to the faculty
Introduction of programme
Career and Academic Opportunities
Meeting With Lectures and Module Overview
This is how we operate
Academic Orientation, Computers and programming & eFundi

08:30-11:30

NWU LANGUAGE AWARENESS WORKSHOPS

All students from the following Faculties to attend:

FACULTY	VENUE
Faculty of Economic & Management Sciences	Building 12 rooms G02, G03 & G05
Faculty of Health Sciences	Building 12 room G06

08:00-13:00 (Lab)

All students from the following Faculties to attend CTL:

Law Building 9A rooms 103 & 104	eFundi (Introduction To eFundi) Learn how to navigate the learning management systems of the NWU Practice submitting assignments Completing Tests and finding course content.
Natural and Agricultural Sciences Building 13 rooms 301 & K4	First Years' Navigator (Navigate your way to Success) Find out about all academic, social and general support on campus.
Education (group 1) Building 9A rooms 106 & 107 and Building 13 room K10	BUSSE (Beginning University Survey Of Student Engagement) The BUSSE measures entering first-year students' pre-university academic and co-curricular experiences and their expectations regarding participation in educationally purposeful activities during their first year.

08:30-10:30 (Building 13)

LIBRARY TOURS

Students from the following faculties to attend:

- Education (Group 2)

13:00-14:00 (Student Centre)

LUNCH

14:00-16:00 (Big-Lapa)

KNOW YOUR SUPPORT DEPARTMENTS

Time Table & Academic Assessment	Know how to read your Time-Table & Academic Assessment
Student Accounts & Bursary	Know more about your student account & Services offered in Bursary Office
Business Enterprise Development	Catering; Housing; Transport & Facilities
International Office	Services offered for the International Students
NSFAS	NSFAS First Year Student information session

16:30

BUSES DEPART FROM BIG LAPA TO RESIDENCES

RESIDENCE PROGRAMME

18:00-19:00

KNOW YOUR RULE BOOK

All students to assemble at the residences.

19:00-20:00

DINNER

20:00-22:00

CARNIVAL PRACTICE

All students to assemble at the residences.

22:00

PROGRAMME ENDS

WEDNESDAY 29 JANUARY

08:00-13:00

All students from the following Faculties to attend CTL:

Humanities	eFundi (Introduction to eFundi) Learn how to navigate the learning management systems of the NWU Practice submitting assignments Completing Tests and finding course content.
Building 9A rooms 106 & 107 and Building 13 room 301	First Years' Navigator (Navigate your way to Success) Find out about all academic, social and general support on campus.
	BUSSE (Beginning University Survey of Student Engagement) The BUSSE measures entering first-year students' pre-university academic and co-curricular experiences and their expectations regarding participation in educationally purposeful activities during their first year.

08:30-11:30

NWU LANGUAGE AWARENESS WORKSHOPS

All students from the following Faculties to attend:

FACULTY	VENUE
Faculty of Law	Building 25 room G01
Faculty of Natural & Agricultural Sciences	Building 25 room G08
Faculty of Education	Building 24 room G67 and Building 25 room G03
Faculty of Theology	Building 25 room G07

08:30-10:30 (Building 9A room 102)

FINANCIAL LITERACY

Students from the following faculties to attend:

- Health Sciences

12:00-13:00 (Building 13)

LIBRARY TOURS

Students from the following faculties to attend:

- Law

13:00-14:00

LUNCH

14:00-15:30 (Building 13)

LIBRARY TOURS

Students from the following faculties to attend:

- Humanities

14:00-16:00 (Big Lapa)

BORDERLINE-TEST

All students from the following faculties to attend:

VENUE	ACTIVITY
Building 12 room G06	Afrikaans (TAG TEST)
Building 12 room G02	English (TALL TEST)
Building 12 room G05	Sesotho

14:00-16:00

FINANCIAL LITERACY

All students to attend from the following faculties to attend:

FACULTY	VENUE
Education	Building 24 room G67 and Building 25 room G03
Law	Building 25 room G03
Natural & Agricultural Sciences	Building 25 room G01

16:30

BUSES DEPART FROM BIG LAPA TO RESIDENCES

RESIDENCE PROGRAMME

18:00-19:00

SUBSTANCE ABUSE, PEER PRESSURE, CLEANLINESS AND TAKING CARE OF SURROUNDING FACILITIES

All students to assemble at the residences.

19:00-20:00

DINNER

20:00-22:00

CARNIVAL PRACTICE

All students to assemble at the residences.

22:00

PROGRAMME ENDS

THURSDAY 30 JANUARY

08:00-13:00

(Building 9A room 106 & 107 and Building 13 room 301)

All students from the following Faculties to attend CTL:

Education (Group 2)	eFundi (Introduction To eFundi) Learn how to navigate the learning management systems of the NWU Practice submitting assignments Completing Tests and finding course content.
Theology	First Years' Navigator (Navigate your way to Success) Find out about all academic, social and general support on campus.
Health Sciences	BUSSE (Beginning University Survey Of Student Engagement) The BUSSE measures entering first-year students' pre-university academic and co-curricular experiences and their expectations regarding participation in educationally purposeful activities during their first year.

08:30-11:30

NWU LANGUAGE AWARENESS WORKSHOPS

All students from the following Faculties to attend:

FACULTY	VENUE
Faculty of Humanities	Building 12 rooms G03 & G04

08:00-10:00

CAMPUS TOURS

Students from the following faculties to attend:

- Economic & Management Sciences

08:30-10:30 (Building 13)

LIBRARY TOURS

Students from the following faculties to attend:

- Natural and Agricultural Sciences

10:30-12:30 (Building 13)

CAMPUS TOURS

Students from the following faculties to attend:

- Natural and Agricultural Sciences

11:30-13:00

CAMPUS TOURS

Students from the following faculties to attend:

- Humanities

10:30-12:30

FINANCIAL LITERACY

All students to attend from the following faculties to attend:

FACULTY	VENUE
Economic & Management Sciences	Building 12 rooms G02 & G05

13:00-14:00

LUNCH

14:00-16:00

LATE REGISTRATION

TAG and TALL TEST

LANGUAGE	VENUE
English (Tall Test)	Building 24 room G67
Afrikaans (Tag Test)	Building 25 room G03
Sesotho Test	Building 25 room G06

14:00-16:00 (Big Lapa)

MEET YOUR STUDENT LEADERSHIP

Students from the following faculties to attend:

- Economic & Management Sciences
- Humanities
- Theology
- Health Sciences

16:30

BUSES DEPART FROM BIG LAPA TO RESIDENCES

RESIDENCE PROGRAMME

18:00-19:00

SUICIDAL & PARA-SUICIDAL CRISIS IN RESIDENCE

19:00-20:00

DINNER

20:00-22:00

CARNIVAL PRACTICE

All students to assemble at the residences.

22:00

PROGRAMME ENDS

FRIDAY 31 JANUARY

08:30-10:00

LATE REGISTRATION

TAG and TALL TEST

LANGUAGE	VENUE
English (Tall Test)	Building 24 room G67
Afrikaans (Tag Test)	Building 25 room G03
Sesotho Test	Building 25 room G06

08:30-10:30 (Building 13)

LIBRARY TOURS

Students from the following Faculties to attend:

- Health Sciences

10:30-12:00 (Building 13)

CAMPUS TOURS

Students from the following Faculties to attend:

- Health Sciences

08:00-10:00

FINANCIAL LITERACY

All students from the following Faculties to attend:

FACULTY	VENUE
Humanities	Building 12 room G05
Theology	Building 9A room102

08:00-13:00 (Big Lapa)

Students (those not attending other sessions) from all Faculties to attend Presentations by Support Departments

08:30-12:00 (Big Lapa)

UNITS WITHIN STUDENT LIFE

Office of the Director
Clinic
Arts and Culture
Radio Station
Sports
Student Counselling and Development

11:00-12:00 (Building 13)

LIBRARY TOURS

Student from the following Faculties to attend:

- Theology

12:00-13:00

CAMPUS TOURS

Students from the following Faculties to attend:

- Theology

13:00-14:00

LUNCH

14:00-16:00 (Big Lapa)

All Faculties to attend Presentations by Affiliated Societies.

16:30

BUSES DEPART FROM THE BIG LAPA TO RESIDENCES

RESIDENCE PROGRAMME

18:00-19:00

CARNIVAL PRACTICE

19:00-20:00

DINNER

20:00-22:00

MOVIE-NIGHT

22:00

PROGRAMME ENDS

welkom by die

NWU

Dit begin alles hier[®]



43 527

(kontak)



24 779

(afstandsleer)



44 770

vroue
(kontak- en afstandsleer)

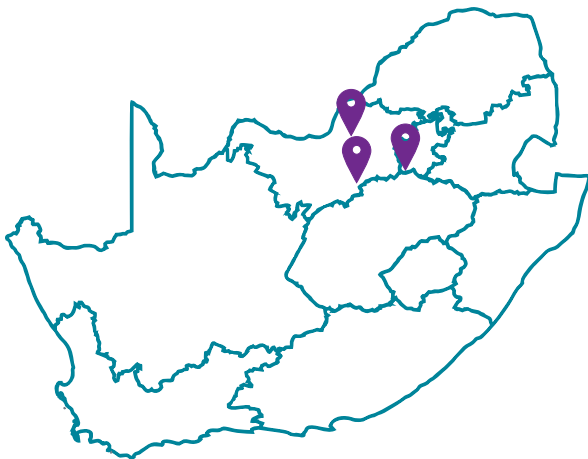


24 779

mans
(kontak- en afstandsleer)



Die NWU (Noordwes-Universiteit se kernaktiwiteite, onderrig-leer en navorsing, is verweef met gemeenskapsimpak en innovasie op ons drie kampusse wat afstand-en kontakstudente bedien.



8 FAKULTEITE

Gesondswetenskappe

Regte

Teologie

Geesteswetenskappe

Ingenieurswese

Opvoedkunde

Natuur- en Landbouwetenskappe

Ekonomiese- en Bestuurswetenskappe

REGISTRASIE - EN

ORIËNTERINGSPROGRAM (R&O) 2020

- Dit is verpligtend vir alle eerstejaarstudente om aan die oriënteringsprogram deel te neem.
- Webregistrasie (20 - 24 Januarie 2020) - Eerstejaarstudente mag eers op die web registreer nadat kurrikulumkontrole op die ondergenoemde datums gedoen is.
- Volg hierdie skakel vir verdere inligting oor die registrasie:
<http://studies.nwu.ac.za/studies/registrations>

MAANDAG, 20 JANUARIE

Alle studente en ouers woon eers die Ontvangs by voor registrasie.

08:00-09:00 EERSTEJAARSONTVANGS (Groot Lapa)

Verwelkoming deur die Uitvoerende Direkteur: Korporatiewe Verhoudinge en Bemaking	Mnr Clement Manoko
Skriflesing en gebed deur lid van Universiteitsraad	Fr David Dinebogile
Die KSR-voorsitter stel lede van die KSR en die VSR-voorsitter voor	Mnr Tebogo Siziba
Boodskap van die VSR-Voorsitter	Mnr Heinz Schoeman-Struwig
Boodskap van die Visekanselier	Prof Dan Kgwadi
Bedankings deur die Adjunk-visekanselier: Beplanning en Kampusbedrywighede van die Vanderbijlparkkampus	Prof Linda Du Plessis

08:30-16:30 (Registrasiegebou 6) REGISTRASIE

Alle studente kom bymekaar by die Registrasiegebou.

- Alle studente wat geskeduleer is om te registreer vir die programme soos hieronder aangedui:
- Studente word aangeraai om na die instruksies van die Kampusstudenterraad te luister rakende die prosesverloop.
 - Sodra registrasie afgehandel is, kan studente hul studiegidse in gebou 25 afhaal.

PROGRAM	FAKULTEIT
Alle programme	Opvoedingswetenskappe
Alle programme	Regte
Alle programme	Natuur- en Landbouwetenskappe

13:00-14:00 MIDDAGETE

16:30 BUSSE VERTREK VANAF GROOT LAPA NA KOSHUISE

KOSHUISPROGRAM

18:00-19:00
LEER KEN JOU HUISKOMITEE EN HUISOUERS
Alle studente kom bymekaar by hul onderskeie koshuise.

19:00-20:00 AANDETE

20:00-22:00
KARNAVALOEFENING
Alle studente kom bymekaar by hul onderskeie koshuise.

22:00 PROGRAM EINDIG

DINSDAG, 21 JANUARIE

Alle studente en ouers woon eers die Ontvangs by voor registrasie

08:00-09:00 EERSTEJAARSONTVANGS (Groot Lapa)

Verwelkoming deur die Uitvoerende Direkteur: Korporatiewe Verhoudinge en Bemaking	Mnr Clement Manoko
Skriflesing en gebed deur lid van Universiteitsraad	Fr David Dinebogile
Die KSR-voorsitter stel lede van die KSR en die VSR-voorsitter voor	Mnr Tebogo Siziba
Boodskap van die VSR-Voorsitter	Mnr Heinz Schoeman-Struwig
Boodskap van die Visekanselier	Prof Dan Kgwadi
Bedankings deur die Adjunk-visekanselier: Beplanning en Kampusbedrywighede van die Vanderbijlparkkampus	Prof Linda Du Plessis

08:30-16:30 (Registrasiegebou 6) REGISTRASIE

Alle studente kom bymekaar by die Registrasiegebou.

- Alle studente wat geskeduleer is om te registreer vir die programme soos hieronder aangedui:
- Studente word geadviseer om die Kampusstudenterraad se riglyne te volg voordat hulle voortgaan
 - Sodra registrasie afgehandel is, kan studente hul studiegidse in Algemene Akademiese Gebou afhaal

PROGRAM	FAKULTEIT
Alle programme	Ekonomiese en Bestuurswetenskappe Alle BA-programme

08:00-13:00 (Gebou 12 lokaal G03)
Alle studente in die Fakulteit Natuur- en Landbouwetenskappe woon fakulteitgebaseerde aktiwiteite by

08:00-13:00 (Gebou 12 lokale G02 en Gebou 9C lokaal G02)
Alle studente in die Fakulteit Opvoedingswetenskappe woon fakulteitgebaseerde aktiwiteite.

08:30-10:00 Gebou 12 lokaal G02 en Gebou 9C lokaal G02	Verwelkoming deur die fakulteitsbestuur
10:00-13:00 Gebou 9A lokale 103,104,106 & 107 Gebou 13 lokale K4 & K10	IT registrasie

08:30-10:00 (Gebou 25 lokaal G03)

Alle studente in die Fakulteit Regte woon fakulteitgebaseerde aktiwiteite by:

13:00-14:00

MIDDAGETE

14:00-16:00

TAG- en TALL-TOETSE

Word bygewoon deur alle studente van die volgende fakulteite:

ENGELS (TALL-TOETS)	Lokaal
Opvoedingswetenskappe	Gebou 24 lokaal G67
Regte	Gebou 25 lokaal G08
Natuur- en Landbou-wetenskappe	Gebou 25 lokaal G01

AFRIKAANS (TAG-TOETS)	Gebou 25 lokaal G03
-----------------------	---------------------

SESOTHO TOETS	Gebou 25 lokaal G06
---------------	---------------------

16:30

BUSSE VERTREK VANAF GROOT LAPA NA KOSHUISE

KOSHUISPROGRAM

18:00-19:00

SPANBOUAKTIWITEITE

Alle studente kom bymekaar by hul onderskeie koshuise.

19:00-20:00

AANDETE

20:00-22:00

KARNAVALOEFENING

Alle studente kom bymekaar by hul onderskeie koshuise.

22:00

PROGRAM EINDIG

WOENSDAG, 22 JANUARIE

Alle studente en ouers woon eers die Ontvangs by voor registrasie.

08:00-09:00

EERSTEJAARSONTVANGS (Groot Lapa)

Verwelkoming deur die Uitvoerende Direkteur: Korporatiewe Verhoudinge en Bemaking	Mnr Clement Manoko
Skriflesing en gebed deur lid van Universiteitsraad	Fr David Dinebogile
Die KSR-voorsitter stel lede van die KSR en die VSR-voorsitter voor	Mnr Tebogo Siziba
Boodskap van die VSR-Voorsitter	Mnr Heinz Schoeman-Struwig
Boodskap van die Visekanselier	Prof Dan Kgwadi
Bedankings deur die Adjunk-visekanselier: Beplanning en Kampusbedrywighede van die Vanderbijlparkkampus	Prof Linda Du Plessis

08:30-16:30 (Registrasiegebou 6)

REGISTRASIE

Alle studente kom bymekaar by die Registrasiegebou.

Alle studente wat geskeduleer is om te registreer vir die programme soos hieronder aangedu:

- Studente word geadviseer om die KSR se riglyne te volg voordat hulle voortgaan
- Sodra registrasie afgehandel is, kan studente hul studiegids in Algemene Akademiese Gebou afhaal

PROGRAM	FAKULTEIT
Alle programme	Geesteswetenskappe
Alle programme	Teologie
Alle programme	Gesondheidswetenskappe BSW (Maatskaplike Werk)

Alle studente in die Fakulteit Opvoedingswetenskappe woon fakulteitgebaseerde aktiwiteite by:

08:00-13:00 (Gebou 12 lokaal G02 en Gebou 9C lokaal G02)
ONDERWERP: WGL, POP en ekskursies

08:00-13:00 (Gebou 12 lokaal G06)

Alle studente in die Fakulteit Regte woon fakulteitgebaseerde aktiwiteite by:

08:00-09:00	FBK-bekendstelling deur skyfies/video
09:00-10:00	RSR - Regstudentelewe (Fakulteit Regte, Moots, "Black Lawyers Association" se Studentetak, Studente vir Regte en Maatskaplike Geregtheid en RSR)
10:00-11:00	Ninette Crous - Regskryftoets
11:15-12:00	Verwelkoming deur Uitvoerende Dekaan
12:00-13:00	Loopbaanopsie

08:00-13:00 (Gebou 12 lokaal G03)

Alle studente in die Fakulteit Natuur- en Landbou-wetenskappe woon fakulteitgebaseerde aktiwiteite by:

Bekendstelling van Studentetakke (studente word in drie groepe verdeel): <ul style="list-style-type: none">• Geo- en Ruimtelike Wetenskappe• Wiskundige en Statistiese Wetenskappe en BWI• Rekenaarwetenskap en Inligtingstelsels
Verwelkoming deur die Uitvoerende Dekaan FNLW Akademiese Struktuur-aanbieding: Direkteurs en Vakvoorsitters. (Studente word in drie groepe verdeel): <ul style="list-style-type: none">• Geo- en Ruimtelike Wetenskappe• Wiskundige en Statistiese Wetenskappe en BWI• Rekenaarwetenskap en Inligtingstelsels
POUSE
Studiemetodes (n dosent van elke Skool bied 'n interaktiewe sessie aan). Studente word in drie groepe verdeel: <ul style="list-style-type: none">• Geo- en Ruimtelike Wetenskappe• Wiskundige en Statistiese Wetenskappe en BWI• Rekenaarwetenskap en Inligtingstelsels

08:00-13:00

Alle studente in die Fakulteit Ekonomiese en Bestuurs-wetenskappe woon fakulteitgebaseerde aktiwiteite by:

08:00-11:00	Onderwerp Vir jou veiligheid •Selfverdediging •Bewustheid •Aanlyn veiligheid	Aanbieders Drs William van Blerk & Charles van der Vyver
Gebou 12 lokale G01, G04 & G05		
IT REGISTRASIE 11:00-13:00 Gebou 9A, lokale 103, 104, 106 & 107 Gebou 13 lokale K4, K10 & 301		

13:00-14:00 (Studentesentrum)
MIDDAGETE

14:00-16:00

TAG- en TALL-TOETSE

Word bygewoon deur alle studente van die volgende fakulteite:

- Ekonomiese en Bestuurswetenskappe

GEBOU	AKTIWITEIT
Gebou 9B lokale G01 & G02 Gebou 9C lokaal G01	Afrikaans (TAG-TOETS)
Gebou 12 lokale G01, G04 & G05 Gebou 12 lokaal G02	Engels (TALL-TOETS) Sesotho

14:00-15:30

(Gebou 24 lokaal G67 and Gebou 25 lokale G01 & G08)

UPSET-navorsingsfokusarea

Word bygewoon deur alle studente van die volgende fakulteite:

- Opvoedingswetenskappe
- Regte
- Natuur- en Landbouwetenskappe

16:30

BUSSE VERTREK VANAF GROOT LAPA NA KOSHUISE

KOSHUISPROGRAM

18:00-19:00

MENSEREGTEBEWUSTHEID

Alle studente kom bymekaar by hul onderskeie koshuise.

19:00-20:00

AANDETE

20:00-22:00

KARNAVALOEFENING

Alle studente kom bymekaar by hul onderskeie koshuis.

22:00

PROGRAM EINDIG

DONDERDAG, 23 JANUARIE

08:00-13:00 (Gebou 12 lokale G01 & G04)

FAKULTEITGEBASEERDE PROGRAMME

Alle studente in die Fakulteit Geesteswetenskappe woon fakulteitgebaseerde aktiwiteite by:

TYD	BESKRYWING
09:00-10:00	Welkom by Geesteswetenskappe
10:00-11:00	Van skool na universiteit
11:00-12:00	Meertaligheidsbewustheid
12:00-13:00	Fakulteitsreëls en -prosedures

08:00-13:00 (Gebou 13 lokaal K4)

Alle studente in die Fakulteit Teologie woon fakulteitgebaseerde aktiwiteite by:

IT REGISTRASIE

08:00-13:00 (Gebou 9A lokaal 104)

Alle studente in die Fakulteit Gesondheidswetenskappe woon die Fakulteitgebaseerde program by:

SKOOL	ONDERWERP
Maatskaplike Werk en Sielkunde	Bekendstelling van Studentetak en verwelkoming
	Akademie se Struktuur-aanbieding
	Eerstejaarsboekies sal uitgedeel word
	Loopbaan- en akademiese geleenthede
	Fakulteitspesifieke terminologie (Skool- /vakgroepspeesifieke terminologie)

08:00-13:00

Alle studente in die Fakulteit Opvoedingswetenskappe woon fakulteitgebaseerde aktiwiteite by:

ONDERWERP: Hoe om 'n uitstekende onderwyser te word

08:00-13:00

Gebou 9A lokale 103, 104, 106 & 107

Gebou 13 lokaal K10

eFundi (Bekendstelling aan eFundi)

Leer hoe om die leerbestuurstelsels van die NWU te gebruik

Oefen hoe om werkopdragte in te dien

Toetse en hoe om kursusinhoud op te spoor.

Eerstejaarsnavigator (Navigeer jou pad na Sukses)

Vind uit oor alle akademiese, maatskaplike en algemene ondersteuning op kampus.

BUSSE (Beginning University Survey of Student Engagement)

Die BUSSE-opname meet nuweling-eerstejaarstudente se pre-universiteits- akademiese en ko-kurrikulêre ervarings en hul verwagtinge ten opsigte van deelname aan opvoedkundig doelgerigte aktiwiteite gedurende hul eerste jaar.

08:00-13:00 (Gebou 25 lokaal G03)

Alle studente in die Fakulteit Regte woon fakulteitgebaseerde aktiwiteite by:

08:00-09:00	Etiek
09:00-10:00	Fakulteitprojekte
10:00-11:00	Kritiese Denke
11:15-13:00	Regstudentelewe

08:00-13:00 (Gebou 12 lokaal G03)

Alle studente in die Fakulteit Natuur- en Landbouwetenskappe woon fakulteitgebaseerde aktiwiteite by:

TYD	ONDERWERP
08:00	Verwelkoming en oorsig van dag se verrigtinge
08:15	Fakulteitspesifieke terminologie
09:45	Akademie se Skryfstyl
11:45	Loopbaan- en Akademie se Geleenthede binne die Fakulteit en Industrie

08:00-13:00 (Gebou 24 lokale G67 en Gebou 25 lokale G01 & G08)

Alle studente in die Fakulteit Ekonomiese en Bestuurswetenskappe woon fakulteitgebaseerde aktiwiteite by:

TYD	ONDERWERP (VIR JOUSELF)	AANBIEDERS
08:00-09:00	Begroting en Finansies	Prof Thys Swanepoel
09:00-10:00	Etiek	Dr Verona Leendertz
10:00-12:00	eFundi	Elne van Niekerk
12:00-13:00	Sosiale Media	Koos de Villiers

13:00-14:00

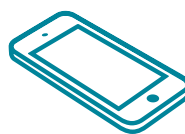
MIDDAGETE

MAAK DIE NWU JOU...



stuur 'n sms na

41617



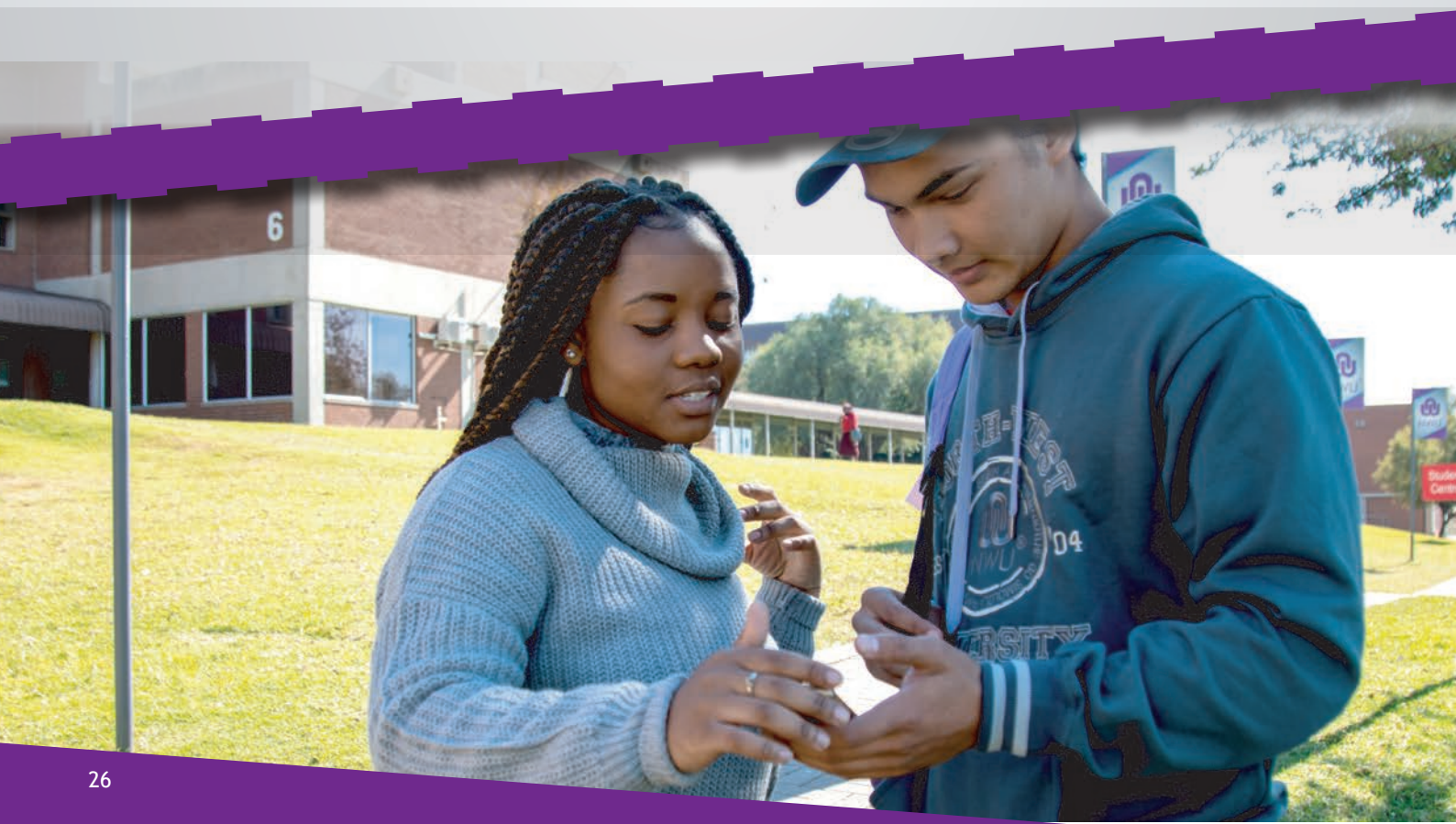
Ons ontvang dit op
'n databasis



Jou klagte/
gedagte bly
anoniem



Ons gee ook terugvoer
op boodskappe



NWU

op sosiale media



Kry die nuutste nuus, gebeure en aktiwiteite deur ons bladsye te 'like'!
Gebruik **#MYNWU** wanneer jy 'n plasing maak.
[@NWUNorthWestUniversity](https://www.facebook.com/NWUNorthWestUniversity)



Deel jou unieke NWU-ervaring deur die **#MYNWU** te gebruik.
Volg ons [@my_nwu](https://www.instagram.com/my_nwu)



Skakel met ons op 'n professionele vlak.
[North-West University/Noordwes-Universiteit](https://www.linkedin.com/company/north-west-university-noordwes-universiteit)



Volg ons [@theNWU](https://twitter.com/theNWU) en gebruik ons hastag wanneer jy tweet - **#MYNWU**



MEET

Eagi 



#NWUEAGLES

14:00-16:30

TAG- en TALL-TOETSE

Word bygewoon deur alle studente van die volgende fakulteite:

- Geesteswetenskappe
- Teologie
- Gesondheidswetenskappe

Gebou	AKTIWITEIT
Gebou 9B lokale G01 & G02 Gebou 9C lokaal G01	Afrikaans (TAG-TOETS)
Gebou 12 lokale G01, G04 & G05 Gebou 12 lokaal G02	Engels (TALL-TOETS) Sesotho

14:00-16:30 (Groot Lapa)

EENHEDE BINNE STUDENTELEWE

Word bygewoon deur alle studente van die volgende fakulteite:

- Ekonomiese en Bestuurswetenskappe
- Opvoedingswetenskappe
- Regte
- Natuur- en Landbouwetenskappe

TYD	EENHEID
14:10-14:25	Kantoor van die Direkteur
14:25-14:45	Kliniek
14:45-15:00	Kuns en Kultuur
15:00-15:15	Radiostasie
15:15-15:30	Sport
15:30-16:30	Studenteberading en -ontwikkeling

16:30

BUSSE VERTREK VANAF GROOT LAPA NA KOSHUISE

KOSHUISPROGRAM

18:00-19:00

OPVOEDKUNDIGE GESPREK: GESLAGSGBASEERDE GEWELD en LGBTQIA+ SE REGTE

Alle studente kom bymekaar by hul onderskeie koshuise.

19:00-20:00

AANDETE

20:00-22:00

KARNAVALOEFENING

Alle studente kom bymekaar by hul onderskeie koshuise.

22:00

PROGRAM EINDIG

VRYDAG, 24 JANUARIE

08:00-13:00

(Gebou 12 lokaal G02 and Gebou 9C lokaal G02)

Alle studente in die Fakulteit Opvoedingswetenskappe woon fakulteitgebaseerde aktiwiteite by:

ONDERWERP: Selfgerigte Leer, die Rol van Besinning en Akademiese Sukses.

08:00-13:00 (Gebou 25 lokaal G03)

Alle studente in die Fakulteit Regte woon fakulteitgebaseerde aktiwiteite by:

TYD	ONDERWERP
08:00-09:00	Hoe om aantekeninge te maak
09:00-10:00	Intro: Eerstejaarslesings
10:00-11:00	Regsleestoets

11:15-12:00	Realiteite van Verkragting
12:00-13:00	Regskommissiesimposium oor die Regsverwante Kwessies.

08:00-13:00 (Gebou 12 lokaal G03)

Alle studente in die Fakulteit Natuur- en Landbouwetenskappe woon fakulteitgebaseerde aktiwiteite by:

ONDERWERP	GEBOU
FNLW-toere: Fakulteitsfasiliteite	Gebou 12 lokaal G03

08:00-13:00

Alle studente in die Fakulteit Ekonomiese en Bestuurswetenskappe woon fakulteitgebaseerde aktiwiteite by:

ONDERWERP	AANBIEDER
Vir jou eerstejaar: · Studiemetodes · Tydsbestuur · Groepwerk · Gesondheid	Dr Jurie van Niekerk

09:00-13:00 (Gebou 12 lokaals G01 & G04)

Alle studente in die Fakulteit Geesteswetenskappe woon fakulteitgebaseerde aktiwiteite by:

TYD	ONDERWERP
09:00-10:00	Geesteswetenskappe en Die Toekoms
10:00-11:00	Diversiteitsbewustheid
11:00-13:00	Akademiese Integriteit

08:00-13:00 (Gebou 13 lokaal K04)

Alle studente in die Fakulteit Teologie woon fakulteitgebaseerde aktiwiteite by:

eFundi (Bekendstelling aan eFundi) Leer hoe om die leerbestuurstelsels van die NWU te gebruik Oefen hoe om werkopdrage in te dien Toetse en hoe om kursusinhoud op te spoor.
Eerstejaarsnavigator (Navigeer jou pad na Sukses) Vind uit oor alle akademiese, maatskaplike en algemene ondersteuning op kampus.
BUSSE (Beginning University Survey of Student Engagement) Die BUSSE-opname meet nuweling-eerstejaarstudente se pre-universiteits- akademiese en ko-kurrikulêre ervarings en hul verwagtinge ten opsigte van deelname aan opvoedkundig doelgerigte aktiwiteite gedurende hul eerste jaar.

08:00-13:00 (Gebou 9A lokaal 104)

Alle studente in die Fakulteit Gesondheidswetenskappe woon fakulteitgebaseerde aktiwiteite by:

SKOOL	ONDERWERP
Maatskaplike Werk en Sielkunde	Simulasie-aktiwiteite (Skool- /vakgroepspeesifiek)
Alle vakgroepe in Gebou 9B lokaal G04	Aanbieding deur Sentrum vir Onderrig en Leer: Eerstejaarervaring

13:00-14:00

MIDDAGETE

14:00-16:00

UPSET-NAVORSINGSFOKUSGROEP

Word bygewoon deur alle studente van die volgende fakulteite:

FAKULTEIT	GEBOU
Ekonomiese en Bestuurswetenskappe	Gebou 24 lokaal G67
Geesteswetenskappe	Gebou 25 lokale G01, G03, G06, G07, G08 & G09
Gesondheidswetenskappe	
Teologie	

14:00-16:00
IT-REGISTRASIE

Word bygewoon deur alle studente van die volgende fakulteite:

FAKULTEIT	VENUE
Regte	Gebou 9A lokaals 103, 104, 106 & 107
Natuur- en Landbouwetenskappe	Gebou 13 lokale K4, K10 & 301
Opvoedingswetenskappe	

16:30
BUSSE VERTREK VANAF GROOT LAPA NA KOSHUISE

KOSHUISPROGRAM

18:00-19:00
OPVOEDKUNDIGE GESPREK OOK KOSHUISREËLS
Alle studente kom bymekaar by hul onderskeie koshuise.

19:00-20:00
AANDETE

20:00-22:00
KARNAVALOEFENING
Alle studente kom bymekaar by hul onderskeie koshuise.

22:00
PROGRAM EINDIG

SATERDAG, 25 JANUARIE

08:30-15:00
REIK UIT EN GEE
SPORTDAG
Alle studente woon dit by.

13:00-14:00
MIDDAGETE

15:00
BUSSE VERTREK NA KOSHUISE

19:00-20:00
AANDETE

20:00
KARNAVALOEFENING
Alle studente kom bymekaar by hul onderskeie koshuise.

22:00
PROGRAM EINDIG

SONDAG, 26 JANUARIE

08:00-09:00
ONTBYT

09:00-13:00
SAAMSINGFEES (STUDENTELEWE EN KSR)

13:00-14:00
MIDDAGETE GRYP en GAAN
BUSSE VERTREK NA KOSHUISE

19:00-20:00
AANDETE

20:00
KARNAVALOEFENING
Alle studente kom bymekaar by hul onderskeie koshuise.

22:00
PROGRAM EINDIG

MAANDAG, 27 JANUARIE

08:00-13:00 (Gebou 12 lokaal G02 and Gebou 9C lokaal G02)
Alle studente in die Fakulteit Opvoedingswetenskappe woon fakulteitgebaseerde aktiwiteite by:
ONDERWERP: Besinning oor maatskaplike geregtigheid en diversiteit

08:00-13:00 (Gebou 25 lokaal G03)
Alle studente in die Fakulteit Regte woon fakulteitgebaseerde aktiwiteite by:

TYD	ONDERWERP
08:00-09:00	Verwelkoming en Verduideliking van Proses
09:00-13:00	Keuringstoets

08:00-13:00
Alle studente in die Fakulteit Ekonomiese en Bestuurswetenskappe woon by:

09:00-13:00 (Gebou 9A lokale 103, 104, 106 & 107 and Gebou 13 lokale K4, K10 & 301)

eFundi (Bekendstelling aan eFundi) Leer hoe om die leerbestuurstelsels van die NWU te gebruik Oefen hoe om werkopdragte in te dien Toetse en hoe om kursushoud op te spoor.
Eerstejaarsnavigator (Navigeer jou pad na Sukses) Vind uit oor alle akademiese, maatskaplike en algemene ondersteuning op kampus.
BUSSE (Beginning University Survey of Student Engagement) Die BUSSE-opname meet nuwelings-eerstejaarstudente se pre-universiteits- akademiese en ko-kurrikulêre ervarings en hul verwagtinge ten opsigte van deelname aan opvoedkundig doelgerigte aktiwiteite gedurende hul eerste jaar.

08:00-13:00
Alle studente in die Fakulteit Geesteswetenskappe woon fakulteitgebaseerde aktiwiteite by:

SKOOLSPESIFIEKE DAG	
Gebou 12 lokaal G01 - Skool vir Sosiale Wetenskappe	
Gebou 12 lokaal G04 - Skool vir Filosofie	
Gebou 12 lokaal G05 - Skool vir Owerheidstudies	
Gebou 31 lokaal G10 - Skool vir Kommunikasie	
Gebou 31 lokaal G02 - Skool vir Tale	

08:00-13:00 (Gebou 12 lokaal G03)
Alle studente in die Fakulteit Gesondheidswetenskappe woon fakulteitgebaseerde aktiwiteite by:

SKOOL	ONDERWERP
Maatskaplike Werk Sielkunde	Fakulteittoer: Studentetakkomitee lede deel studente in groepe op en wys vir hulle verskeie fakulteitkampusspesifieke lokale wat relevant is vir hul studierigting.

08:00-13:00 (Gebou 9A lokaal 102)
 Alle studente in die Fakulteit Teologie woon fakulteitgebaseerde aktiwiteite by:

08:00-09:30	Gesprek: Uiteindelik vry! Of nie?
11:30-13:00	Geslagsgelykheid

13:00-14:00 (Studentesentrum)
MIDDAGETE

14:00-16:30
IT-REGISTRASIE
 Word bygewoon deur alle studente van die volgende fakulteite:

FAKULTEIT	PLEK
Geesteswetenskappe	Gebou 9A lokale 103, 104, 106 & 107 en Gebou 13 lokale K4, K10 & 301
Teologie	
Gesondheidswetenskappe	

14:00-16:00 (Gebou 13)
BIBLIOTEEKTOERE
 Word bygewoon deur studente van die volgende fakulteite:

- Ekonomiese en Bestuurswetenskappe

14:00-16:00
KAMPUSTOERE
 Word bygewoon deur studente van die volgende fakulteite:

- Natuur- en Landbouwetenskappe
- Regte
- Opvoedingswetenskappe

16:30
BUSSE VERTREK VANAF GROOT LAPA NA KOSHUISE

KOSHUISPROGRAM

18:00-19:30
MY EERSTEJAARSINSPIRASIE (Huiskomitee en Huisouer)
 Alle studente kom bymekaar by hul onderskeie koshuise.

20:00-22:00
KARNAVALOEFENING
 Alle studente kom bymekaar by hul onderskeie koshuise.

22:00
PROGRAM EINDIG

DINSDAG, 28 JANUARIE

08:00-13:00 (Gebou 12 lokale G01 & G04)
 Alle studente in die Fakulteit Geesteswetenskappe woon fakulteitgebaseerde aktiwiteite by:

TYD	BESKRYWING
08:00-10:00	Akademie Studentevereniging
10:00-11:00	Akademie lewe versus sosiale lewe
11:00-13:00	Die week in perspektief en Geïnspireerde afsluiting

08:00-13:00 (Gebou 9A lokaal 102)
 Alle studente in die Fakulteit Teologie woon fakulteitgebaseerde aktiwiteite by:

ONDERWERP
Verwelkoming
Bekendstelling aan die Fakulteit
Bekendstelling van Program
Loopbaan- en Akademie Geleentheid

Ontmoeting met Dosente en Moduleoorsig
Dit is hoe ons dinge doen
Akademie Oriëntering, Rekenaars en Programmering en eFundi

08:30-11:30
NWU TAALBEWUSTHEIDSWERKSWINKELS
 Word bygewoon deur alle studente van die volgende fakulteite:

FAKULTEIT	PLEK
Fakulteit Ekonomiese en Bestuurswetenskappe	Gebou 12 lokale G02, G03 & G05
Fakulteit Gesondheidswetenskappe	Gebou 12 lokaal G06

08:00-13:00 (Lab)
 Alle studente van die volgende fakulteite woon SOL by:

Regte Gebou 9A lokale 103 & 104	eFundi (Bekendstelling aan eFundi) Leer hoe om die leerbestuurstelsels van die NWU te gebruik Oefen hoe om werkopdragte in te dien Toetse en hoe om kursusinhoud op te spoor.
Natuur- en Landbouwetenskappe Gebou 13 lokale 301 & K4	Eerstejaarsnavigator (Navigeer jou pad na Sukses) Vind uit oor alle akademiese, maatskaplike en algemene ondersteuning op kampus.
Opvoedingswetenskappe (Groep 1) Gebou 9A lokaal G106 & 107 en Gebou 13 lokaal K10	BUSSE (Beginning University Survey of Student Engagement) Die BUSSE-opname meet nuwelinge-eerstejaarstudente se pre-universiteits-akademiese en ko-kurrikulêre ervarings en hul verwagtinge ten opsigte van deelname aan opvoedkundig doelgerigte aktiwiteite gedurende hul eerste jaar.

08:30-10:30 (Gebou 13)
BIBLIOTEEKTOERE
 Word bygewoon deur studente van die volgende fakulteite:

- Opvoedingswetenskappe (Groep 2)

13:00-14:00 (Studentesentrum)
MIDDAGETE

14:00-16:00 (Groot Lapa)
KEN JOU ONDERSTEUNINGSDEPARTEMENTE

Rooster en Akademie Assessering	Leer hoe om jou Rooster en Akademie Assessering te lees
Studenterekenings en Beurs	Kom meer te wete oor jou studenterekening en dienste wat aangebied word deur die Beurskantoor
Sakeonderneming-ontwikkeling	Voedseldienste, Inwoning, Vervoer en Fasiliteite
Internasionale Kantoor	Dienste wat aangebied word aan Internasionale Studente
NSFAS	NSFAS Eerstejaarsinligtingsessie

16:30
BUSSE VERTREK VANAF GROOT LAPA NA KOSHUISE

KOSHUISPROGRAM

18:00-19:00
KEN JOU REËLBOEK
 Alle studente kom bymekaar by hul onderskeie koshuise.

19:00-20:00
AANDETE

20:00-22:00
KARNAVALOEFENING

Alle studente kom bymekaar by hul onderskeie koshuise.

22:00
PROGRAM EINDIG

WOENSDAG, 29 JANUARIE

08:00-13:00

Alle studente van die volgende fakulteite woon SOL by:

Geesteswetenskappe Gebou 9A lokale 106 & 107 en Gebou 13 lokaal 301	eFundi (Bekendstelling aan eFundi) Leer hoe om die leerbestuurstelsels van die NWU te gebruik Oefen hoe om werkopdragte in te dien Toetse en hoe om kursusinhoud op te spoor.
	Eerstejaarsnavigator (Navigeer jou pad na Sukses) Vind uit oor alle akademiese, maatskaplike en algemene ondersteuning op kampus.
	BUSSE (Beginning University Survey of Student Engagement) Die BUSSE-opname meet nuweling-eerstejaarstudente se pre-universiteits-akademiese en ko-kurrikulêre ervarings en hul verwagtinge ten opsigte van deelname aan opvoedkundig doelgerigte aktiwiteite gedurende hul eerste jaar.

08:30-11:30

NWU TAALBEWUSTHEIDSWERKSWINKELS

Word bygewoon deur alle studente van die volgende fakulteite:

FAKULTEIT	GEBOU
Fakulteit Regte	Gebou 25 lokaal G01
Fakulteit Natuur- en Landbouwetenskappe	Gebou 25 lokaal G08
Fakulteit Opvoedingswetenskappe	Gebou 24 lokaal G67 en Gebou 25 lokaal G03
Fakulteit Teologie	Gebou 25 lokaal G07

08:30-10:00 (Gebou 13)

BIBLIOTEEKTOERE

Word bygewoon deur studente van die volgende fakulteite:

- Geesteswetenskappe

08:30-10:30 (Gebou 9A lokaal 102)

FINANSIËLE GELETTERDHEID

Word bygewoon deur studente van die volgende fakulteite:

- Gesondheidswetenskappe

12:00-13:00 (Gebou 13)

BIBLIOTEEKTOERE

Word bygewoon deur studente van die volgende fakulteite:

- Regte

13:00-14:00

MIDDAGETE

14:00-15:30 (Gebou 13)

BIBLIOTEEKTOERE

Word bygewoon deur studente van die volgende fakulteite:

- Geesteswetenskappe

14:00-16:00 (Big Lapa)

TAG- en TALL-TOETSE

GEBOU	AKTIWITEIT
Gebou 12 lokaal G06	Afrikaans (TAG-TOETS)
Gebou 12 lokaal G02	Engels (TALL-TOETS)
Gebou 12 lokaal G05	Sesotho

14:00-16:00

FINANSIËLE GELETTERDHEID

Word bygewoon deur alle studente van die volgende fakulteite:

FAKULTEIT	GEBOU
Opvoedingswetenskappe	Gebou 24 lokaal G67 en Gebou 25 lokaal G03
Regte	Gebou 25 lokaal G03
Natuur- en Landbouwetenskappe	Gebou 25 lokaal G01

16:30

BUSSE VERTREK VANAF GROOT LAPA NA KOSHUISE

KOSHUISPROGRAM

18:00-19:00

SUBSTANSIEMISBRUIK, GROEPSDRUK, SINDELIKHEID EN OMSIEN NA OMLIGGENDE FASILITEITE

Alle studente kom bymekaar by hul onderskeie koshuise.

19:00-20:00

AANDETE

20:00-22:00

KARNAVALOEFENING

Alle studente kom bymekaar by hul onderskeie koshuise.

22:00

PROGRAM EINDIG

DONDERDAG, 30 JANUARIE

08:00-13:00 (Gebou 9A lokale 106 & 107 and Gebou 13 lokaal 301)

Alle studente van die volgende fakulteite woon SOL by:

Gesondheidswetenskappe Teologie Opvoedingswetenskappe (Groep 2)	eFundi (Bekendstelling aan eFundi) Leer hoe om die leerbestuurstelsels van die NWU te gebruik Oefen hoe om werkopdragte in te dien Toetse en hoe om kursusinhoud op te spoor
	Eerstejaarsnavigator (Navigeer jou pad na Sukses) Vind uit oor alle akademiese, maatskaplike en algemene ondersteuning op kampus.
	BUSSE (Beginning University Survey of Student Engagement) Die BUSSE-opname meet nuweling-eerstejaarstudente se pre-universiteits-akademiese en ko-kurrikulêre ervarings en hul verwagtinge ten opsigte van deelname aan opvoedkundig doelgerigte aktiwiteite gedurende hul eerste jaar.

08:30-11:30

NWU TAALBEWUSTHEIDSWERKSWINKELS

Alle studente van die volgende fakulteite woon by:

FAKULTEIT	GEBOU
Fakulteit Geesteswetenskappe	Gebou 12 lokaal G03 & G04

08:00-10:00

KAMPUSTOERE

Word bygewoon deur studente van die volgende fakulteite:

- Ekonomiese en Bestuurswetenskappe

08:30-10:30 (Gebou 13)

BIBLIOTEEKTOERES

Word bygewoon deur studente van die volgende fakulteite:

- Natuur- en Landbouwetenskappe

11:30-13:00

KAMPUSTOERE

Word bygewoon deur studente van die volgende fakulteite:

- Geesteswetenskappe

10:30-12:30

FINANSIËLE GELETTERDHEID

Word bygewoon deur alle studente van die volgende fakulteite:

FAKULTEIT	GEBOU
Ekonomiese en Bestuurswetenskappe	Gebou 12 lokale G02 & G05

13:00-14:00

MIDDAGETE

14:00-16:00

LAAT REGISTRASIE

TAG- en TALL-TOETSE

TAAL	GEBOU
Engels (Tall-toets)	Gebou 24 lokaal G67
Afrikaans (Tag-toets)	Gebou 25 lokaal G03
Sesotho toets	Gebou 25 lokaal G06

14:00-16:00 (Groot Lapa)

ONTMOET JOU STUDENTELEIERSKAP

Word bygewoon deur studente van die volgende fakulteite:

- Ekonomiese en Bestuurswetenskappe
- Geesteswetenskappe
- Teologie
- Gesondheidswetenskappe

16:30

BUSSE VERTREK VANAF GROOT LAPA NA KOSHUISE

KOSHUISPROGRAM

18:00-19:00

SELFMOORD en PARA-SELFMOORDKRISIS IN KOSHUISE

19:00-20:00

AANDETE

20:00-22:00

KARNAVALOEFENING

Alle studente kom bymekaar by hul onderskeie koshuise.

22:00

PROGRAM EINDIG

VRYDAG, 31 JANUARIE

08:30-10:00

LAAT REGISTRASIE

TAG- en TALL-TOETSE

GEBOU	TAAL
Engels (Tall-toets)	Gebou 24 lokaal G67
Afrikaans (Tag-toets)	Gebou 25 lokaal G03
Sesotho toets	Gebou 25 lokaal G06

08:30-12:00

EENHEDE BINNE STUDENTELEWE

Kantoor van die Direkteur
Kliniek
Kuns en Kultuur
Radiostasie
Sport
Studenteberading en -ontwikkeling

08:30-10:30 (Gebou 13)

BIBLIOTEEKTOERE

Word bygewoon deur studente van die volgende fakulteite:

- Gesondheidswetenskappe

10:30-12:00 (Gebou 13)

KAMPUSTOERE

Word bygewoon deur studente van die volgende fakulteite:

- Gesondheidswetenskappe

08:00-10:00

FINANSIËLE GELETTERDHEID

Word bygewoon deur alle studente van die volgende fakulteite:

fakulteite:

FAKULTEIT	GEBOU
Geesteswetenskappe	Gebou 12 lokaal G05
Teologie	Gebou 9A lokaal 102

11:00-12:00 (Gebou 13)

BIBLIOTEEKTOERE

Word bygewoon deur studente van die volgende fakulteite:

- Teologie

12:00-13:00

KAMPUSTOERE

Word bygewoon deur studente van die volgende fakulteite:

- Teologie

13:00-14:00

MIDDAGETE

14:00-16:00 (Groot Lapa)

Alle fakulteite woon aanbiedings deur geaffilieerde Verenigings by:

16:30

BUSSE VERTREK VANAF GROOT LAPA NA KOSHUISE

KOSHUISPROGRAM

18:00-19:00

KARNAVALOEFENING

19:00-20:00

AANDETE

20:00-22:00

FLIEKAAND

22:00

PROGRAM EINDIG



ons gee om vir

JOU!

Wat glo ons?

Ons is 'n universiteitstudentegemeenskap wat glo in 'n leeromgewing wat gebaseer is op deursigtigheid en verantwoordbaarheid.



VRYHEID

Elkeen het die reg op vryheid en veiligheid wat insluit fisiese- en psigologiese integriteit, vryheid van uitdrukking, geloof en assosiasie.



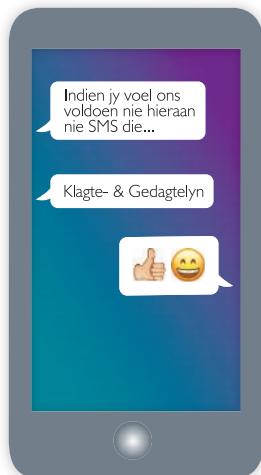
GELYKHEID

As NWU ag ons alle studente gelyk, ongeag jou ras, geslag, herkoms, kleur, seksuele oriëntasie, ouderdom, gestremdheid, godsdiens, kultuur en taal.



MENSWAARDIGHEID

Elkeen het ingebore waardigheid en die reg dat daardie waardigheid gerespekteer en beskerm word.



Daarom:

- Glo ons dat jy nie aan iets onderwerp mag word wat jou minderwaardig laat voel nie
- Beskou ons elke lewe as beskermingswaardig en skep omstandighede vir lewe wat die moeite werd is om te lewe.
- Is jy geregtig op privaatheid in jou persoonlike- en studentelewe wat nie jou menswaardigheid krenk nie.

Mahikengkampus - 34151
Potchefstroomkampus - 31750
Vanderbijlparkkampus - 41617

MYNWXU APP

Why should you download the app?

1. Prospective students

- Communication - faculty, school and residence

2. Accepted students

- Registration and Orientation information
- Student Diary
- Campus maps
- News updates

3. Parents

- Keep up to date with R&O Period



MYNWXU TOEP

Hoekom moet jy die toep aflaai?

1. Voornemende studente

- Kommunikasie - in fakulteit, skool en koshuisverband

2. Aanvaarde studente

- Registrasie en Oriënteringsinligting
- Studentedagboek
- Kampuskaarte
- Nuusgebeure

3. Ouers

- Bly op datum met gebeure tydens die R&O tydperk

