

GRADE 12

PROSPECTUS



2025

CONTENT

01

- North-West University
- Where is NWU located?

02

- Student life
- Accommodation

03

- What are the minimum requirements to study for a bachelor's degree at NWU?
- What is an APS?
- Private or international school systems

04

- International Students
- Interest-Index
- NWU Virtual Tour
- Campus visit

05

- Internal and external bursaries
- Academic Merit Bursary
- Arts and Culture Bursary
- Support Bursary
- Family Discount
- Leadership Bursary
- Sport Bursaries

06

- External Bursaries
- Other Bursaries
- Sport

07

- NWU Arts
- NWU Young Eagles

08

- Apply in 5 EASY STEPS

11

- What do you want to study at our 8 faculties?





Congratulations,
you've made it! Start
your final school year.



NWU
applications
open

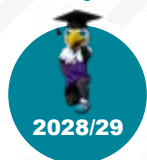


Explore NWU
during our campus
open days!



Applications for
selection courses
& residences close!

Your first graduation



Welcome to NWU for
your first year
of study!



Are you ready to
register with your
final grade 12 results?



Applications close






UNIVERSITY IS ABOUT DISCOVERY. YOUR JOURNEY STARTS BY FOLLOWING YOUR HEART, FINDING YOUR TRIBE, AND OWNING YOUR JOURNEY. NORTH-WEST UNIVERSITY (NWU) OFFERS YOU ACADEMIC EXCELLENCE AND A VIBRANT STUDENT LIFE.

YOUR ADVENTURES WILL SOAR BEYOND THE CLASSROOM, AND YOU WILL FIND NUMEROUS OPPORTUNITIES TO DISCOVER A GREATER YOU.

NORTH-WEST UNIVERSITY (NWU)

North-West University (NWU) offers you a world-class education and a community where you can soar.

-  **Limitless learning:** With state-of-the-art facilities and leading academics, your education will know no bounds.
-  **Community and support:** You'll find a vibrant community and a network of support to help you through every challenge and celebrate every victory.
-  **A future of opportunities:** Our graduates are sought after, ready to make an impact in their careers from day one.

NWU excels in QS World University Rankings – now tenth in Africa!



WHERE IS NWU LOCATED?

NWU has campuses in **Mahikeng**, **Potchefstroom**, and **Vanderbijlpark**. Certain programmes are only offered on specific campuses. If you can't find your preferred qualification, visit NWU Studies: <https://studies.nwu.ac.za/> to see on which campus it's offered.





STUDENT LIFE

NWU is known for its student life! We know being a student is not just about attending classes, late nights in front of the books, or writing exams. It's about a unique experience that few young people are privileged to have.

NWU offers a variety of initiatives and support departments to ensure you can do what you love, try new things, develop your interests, meet interesting people, and make lifelong friends.

Experience a student life greater than you've ever imagined:

<https://www.youtube.com/watch?v=1UdLU3Xj28&t=17s>



ACCOMMODATION

Which residence is the best? It's a question we get a lot. Our current students always answer wherever they live. Our on-campus or town residences are the heartbeat of our student life. NWU also offers private accommodation to fit your needs. All our accommodation is located near dining halls and close to campus so you can be there in a few minutes.

For more information, visit:

www.nwu.ac.za/student/residences



WHAT ARE THE MINIMUM REQUIREMENTS TO STUDY FOR A BACHELOR'S DEGREE AT NWU?

- Obtain a **National Senior Certificate (NSC)** or **Independent Examinations Board (IEB)**, issued by Umalusi, which also indicates that you meet the requirements for a bachelor's degree.
- An NSC with at least **50%** in any **four NSC 20 credit subjects**.
- APS is calculated using **six subjects**, excluding Life Orientation.
- **Subject-specific requirements** per faculty which include the language of learning and teaching at 50%.

Meeting the minimum requirements doesn't guarantee your admission to NWU!

WHAT IS AN APS?

The higher your APS, the better chances of being accepted into the programme. The sum of a maximum of six subjects, **excluding Life Orientation**, is used to determine your APS. See the example below.

- Use NWU's APS calculator: <http://studies.nwu.ac.za/studies/aps-calculator>



Voorbeeld:

NSC Level	APS
8 = 90-100%	8
7 = 80-89%	7
6 = 70-79%	6
5 = 60-69%	5
4 = 50-59%	4
3 = 40-49%	3
2 = 30-39%	2
1 = 0-29%	1

Subject	Percentage (%)	APS
Setswana	72%	6
English	77%	6
History	85%	7
Mathematical Literacy	82%	7
Life Sciences	69%	5
Physical Sciences	76%	6
		Total: 37

PRIVATE OR INTERNATIONAL SCHOOL SYSTEMS

If you attend(ed) a private or international school, you can use the conversion table that can be found on the NWU website: <https://www.nwu.ac.za/content/cambridge-admission-international-students>

The **Cambridge International curriculum** is the most used international examination. The Cambridge **IGCSE qualification** is equivalent to a South African **Grade 11** and the Cambridge **AS Levels** is equivalent to a South African **Grade 12**.

Depending on which level you complete on the Cambridge system, you'll receive different scores.

- **O/IGCSE levels** get the lowest scores starting at 5.
- **AS levels** which are equivalent to the South African matric where an above 90% grade gets 8 and 80% and above gets 7, etc.
- **A level** which is equivalent to the first year at university gets the highest with a grade A scoring APS = 10.
- Calculate APS with **six (6) subjects**. Your APS is calculated using the highest level passed.

See the examples below.

Subject	Level	Grade	APS
English	IGCSE/O level	C	3
Setswana	IGCSE/O level	C	3
Mathematics	A level	B	8
Biology	A level	C	6
Geography	IGCSE/O level	B	4
			24

Subject	Level	Grade	APS
English	A level	C	6
Setswana	IGCSE/O level	D	2
Mathematics	A level	A	10
Biology	A level	C	6
			24

Subject	Level	Grade	APS
English	AS level	B	6
Setswana	AS level	C	5
Mathematics	AS level	B	4
Physical Sciences	AS level	C	5
Accounting	IGCSE/O level	B	4
			24

Subject	Level	Grade	APS
English	AS level	C	5
Setswana	IGCSE/O level	C	3
Mathematics	AS level	D	4
Physical Sciences	AS level	C	5
Chemistry	AS level	B	6
Accounting	IGCSE/O level	C	3
			26

INTERNATIONAL STUDENTS

As an international student, our NWU Global Engagement Office is here to support you, and ensure your arrival and stay are enjoyable.



Join the NWU community: <https://www.nwu.ac.za/international-students>



UNSURE OF WHAT TO STUDY?

The **Interest-Index** – a FREE measuring instrument – helps learners in grade 8-12 to identify possible **subjects**, **fields of study**, and **careers** to their specific interests.

Completed the survey:

<https://marketing.mynwu.info/oneprofile?source=interestindex/>, and receive a report with information on fields of study and careers of interest to you.



- Please note that this service is not intended to be a substitute for professional career guidance.
- For professional career guidance (psychometric testing), please contact our Student Guidance Services department on 018 299 2893. Or contact a career psychologist in your area.

Schedule a consultation session with Student Counselling and Development (SCD):

Mahikeng – MC-SCD@nwu.ac.za

Potchefstroom – SCDPotch@nwu.ac.za

Vanderbijlpark – scdvc@nwu.ac.za



NWU VIRTUAL TOUR

Discover the North-West University experience with our virtual tour:

<https://tour.mynwu.info/#/>



The virtual tour offers a peek into what your life could be like as an NWU Eagle. You get to choose two courses, the campus, and the activities beyond the classroom. From your choices, a tour is compiled that is personalised for you.



CAMPUS VISIT

Hey, high achievers! Ready to take your academic journey to new heights?

Discover the essence of excellence at North-West University! Our commitment to greatness is in every corner of our campuses, and we want you to soak it all in. Don't just hear about it – experience it yourself!

Before you book your campus visit, consider this:

- Which faculty do you want to explore?
- Do you want to visit a residence?
- Do you have a passion for a specific sport?

Get ready for an unforgettable NWU adventure! Book your visit at: <https://studies.nwu.ac.za/visit>

To make sure you have the absolute best time, secure your spot **48–72 hours** in advance. We can't wait to show you what NWU is all about!



INTERNAL AND EXTERNAL BURSARIES

Studying takes hard work, but also requires funding. To help you finance your academic future, we have compiled a list of bursaries and loan schemes.

INTERNAL BURSARIES:

<https://studies.nwu.ac.za/financial-support-services/bursaries-undergraduate-studies>



ACADEMIC MERIT BURSARY

Own your academic journey and pay for your studies. The Academic Merit Bursary is available to all full-time first, second, and third-year students who complete their degree within its relevant duration, e.g., within three years for a three-year degree.

In order to qualify for this bursary, you must meet specific academic requirements. Part-time students must apply and qualify for half of the allocation.



ARTS AND CULTURE BURSARY

Students qualify based on their achievements in the area of arts and culture from Grades 8-12.

To apply, visit: <https://bit.ly/2WlpRcP>.

The Department of Arts and Culture will assess your application. Senior students qualify based on participation in cultural activities at university e.g., NWU choir, symphony orchestra and others.

FAMILY DISCOUNT

Families with two or more students registered simultaneously at NWU can apply for this bursary and will receive a percentage discount on class fees, depending on whether you are the second, third, or fourth family member. One student must apply annually, it is not awarded automatically.

LEADERSHIP BURSARY

Were you a head boy, head girl or a chairman in Grade 12? Thanks to the once-off leadership bursary, you can get an additional discount on your first year of study.

SUPPORT BURSARY

The NWU offers bursaries to prospective students with physical disabilities or students who came from an orphanage or foster care system. The relevant student must have university admission before applying and need only apply once.

Please ensure that all the necessary documents are attached to the application form: <https://studies.nwu.ac.za/sites/studies.nwu.ac.za/files/files/fsd/UG-2024/ondersteuningsbeurs-support-bursary-2024.pdf>



SPORT BURSARIES

The NWU Sport Department awards bursaries only to contracted students. Prospective students with provincial colours can apply for a sports bursary in the major sport codes. For more information, visit: <http://sport.nwu.ac.za>



EXTERNAL BURSARIES

You've probably already heard about the NSFAS Bursary Scheme and Funza Lushaka Bursary.

NSFAS supports students with academic potential who are financially disadvantaged. Only households with a joint income of less than R350 000 per annum will be considered.

Visit <https://www.nsfas.org.za/content/> to find out more about the requirements for your application.



Please note, if you have received an NSFAS bursary, the NSFAS policy states you may receive NO other bursaries, including academic merit bursaries or any of the NWU bursaries on page 5.

The **Funza Lushaka Bursary** was established for South African citizens who dream of attending an intermediary phase and senior phase educational institution, or further education and training (FET).



Visit <http://www.funzalushaka.doe.gov.za/> for more information.

OTHER BURSARIES

visit <https://studies.nwu.ac.za/studies/external-bursaries> AND FIND THE BURSARY THAT COULD MEET YOUR NEEDS.



SPORT

Sport continues to be a core strength of NWU's non-academic life. Based on our achievements on the sports field, NWU is one of the top sports universities in South Africa.

For more information, visit: <https://sport.nwu.ac.za>

Mahikeng:	Potchefstroom:	Vanderbijlpark:
High performance: <ul style="list-style-type: none"> Soccer 	High Performance: <ul style="list-style-type: none"> Rugby Cricket Athletics Soccer Hockey Tennis Netball 	High Performance: <ul style="list-style-type: none"> Soccer Basketball Netball Hockey Rugby
Competitive: <ul style="list-style-type: none"> Aerobics Cross country Boxing Bodybuilding Chess Dance Karate Netball Rugby Tennis Volleyball 	Competitive: <ul style="list-style-type: none"> Swimming Cross country Water polo Cycling and Mountain biking Squash Gymnastics Golf Karate Basketball Badminton 7's Rugby Canoeing 	Competitive: <ul style="list-style-type: none"> Cricket Bodybuilding Chess Karate
Recreation: <ul style="list-style-type: none"> Badminton Basketball Taekwondo Table tennis Ju-jitsu Hockey Cricket 	Recreation: <ul style="list-style-type: none"> e-Sport Dance Rock climbing Table tennis Chess 	Recreation: <ul style="list-style-type: none"> Cross country Canoeing Mind sport Wellness Running Club Dance Cycling and Mountain biking
Wellness: <ul style="list-style-type: none"> Aerobics Circuit training Swimming Learn to swim Pool 	Wellness: <ul style="list-style-type: none"> Aerobics Kickboxing Pilates Spinning Yoga Zumba 	





NWU ARTS

NWU Arts offers a unique blend of academic excellence and hands-on experience. Whether you're passionate about visual arts, performing arts, or digital media, NWU provides a platform for you to cultivate your creativity and hone your skills under the guidance of accomplished faculty members and industry professionals.

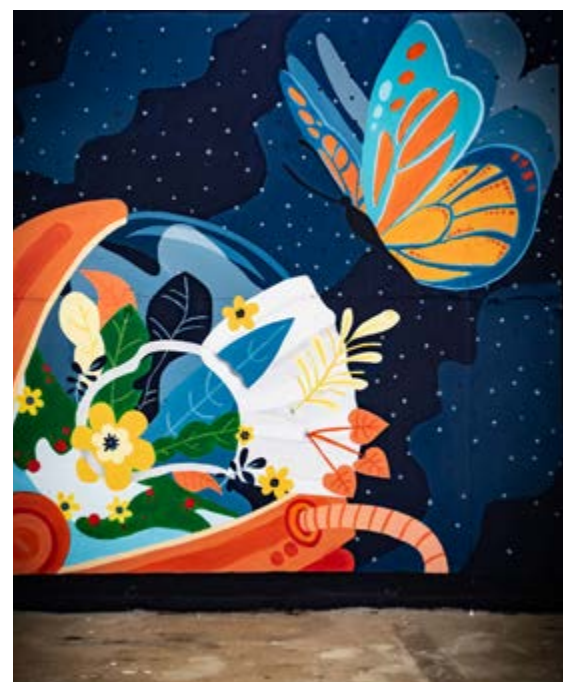
North-West University's arts community is a melting pot of ideas, where collaborative and interdisciplinary projects are encouraged, enabling you to collaborate with fellow #NWUEagles.

This collaborative spirit mirrors the real-world creative industries, preparing you for a future where versatility and adaptability are key.

NWU's state-of-the-art facilities, studios, performance spaces, and galleries are designed to inspire and support your artistic journey.

For more information, visit:

<https://services.nwu.ac.za/nwu-arts>



- NWU Gallery
- Artema
- PUK Choir
- SCC Arts Council
- Symphony Orchestra

- Serenaders
- Dysfunctional Beat Dance Crew
- Thalia Drama Society
- Gospella
- Divaco

SOAR WITH NWU YOUNG EAGLES!

Welcome to North-West University Young Eagles, designed for ambitious young minds like you to soar higher in your academic journey. Our goal is to provide Grade 9 - 12 school learners with the tools they need to make informed study and career choices, develop leadership qualities, and acquire valuable life skills. NWU Young Eagles was created to guide and assist you

at every step of your academic journey. We offer a wide range of services, including first-hand information on study and career options, enrichment programmes, faculty insights, and much more.

Join the Young Eagles and take that leap from high school to university!



APPLY IN 5 EASY STEPS

Here are the steps you complete before applying to NWU:

What will I need before I can apply – minimum requirements?

- A valid, unique, and personal email address.
- You will need to register with this email address before you can apply. Your email address will also be used as your username and will be used to log in to your application profile after you have registered.
- You will also receive a temporary password at first and after you have changed it, you will always use your email address and new password to log onto your application profile.

Apply once per academic year:

You can only apply once for the academic year. Choose up to two study options that align with your goals and interests.

Apply here: <https://applynow.nwu.ac.za/OnlineApplication/>



STEP 1 – CREATE YOUR APPLICATION PROFILE

Create your application profile by registering to apply. Fill in your personal details as shown on your identity document. Your profile is connected to your identity number and username (your email address) – ensure it is correct.



STEP 2 – LOGIN

Your username and temporary password will be sent to your email address. Use it to log in to the application system.

Please do not change your email and phone number this year, as they will be used to send all important communication to you.



STEP 3 – WHAT DO YOU WANT TO STUDY?

Choose your two study options. For all information on qualifications, delivery methods, and curriculums, visit our yearbooks at: <https://studies.nwu.ac.za/studies/yearbooks>

Note: Study options are linked to the campus where it is offered. Ensure you have chosen the correct campus if you cannot find your study choice.





STEP 4 – UPLOAD SUPPORTING DOCUMENTS

Please upload the following supporting documents:

- A certified copy of your ID document and final Grade 11 or 12 results in digital format. The documents must be individually scanned as they are uploaded separately. Preferably available as PDF, jpeg, etc.
- A copy of your academic records (if applicable).

Prospective international students also require the following documentation:

- A certified copy of your ID and your passport.
- A copy of your most recent results, your academic records (if applicable), and your most recent results and previous qualifications.
- Medical examination according to your country's requirements.

After completing your high school career, you must apply for an evaluation certificate from the South African Qualifications Authority (SAQA). Please ensure that all supporting documents are uploaded timeously to prevent any delays in the processing of your NWU application.



STEP 5 – SUBMIT YOUR APPLICATION

On the last screen of the application portal, read and accept the declaration. Press the “Submit application” button once you have completed all the fields so that NWU can receive your application.

NB: If you do not press the “Submit application” button, your application status will be “created”. However, this means that NWU has not received your application and it cannot be processed.

WHAT DO YOU WANT TO STUDY AT OUR 8 FACULTIES?

Helpful abbreviations:

HL – Home Language | **FAL** – First Additional Language | **SAL** – Second Additional Language
MC – Mahikeng Campus | **PC** – Potchefstroom Campus | **VC** – Vanderbijlpark Campus

Admission requirements

Please note the above admission requirements can change depending on selection and possible faculty-specific requirements.

Study information is also subject to change, consider this a summary of the general fields of study. This information was compiled for introduction and orientation purposes and North-West University accepts no liability for inaccuracies that may occur in this guide. The official yearbook of the University must be consulted in all cases during the process of compiling a programme for a specific field of study.

Download the yearbook here: <https://studies.nwu.ac.za/studies/yearbooks>



Owing to specific capacity constraints, the University reserves the right to select candidates for admission to certain study fields. This means that **prospective students who comply with the minimum requirements will not automatically be admitted to the courses in question.**

Because of the capacity limitations and the high demand for admission to particular fields of study, students will be evaluated based on their **final Grade 11 results and fully accepted for admission based on their final Grade 12 results.**

For qualification-related information, please contact the marketer allocated to your school.



FACULTY OF ENGINEERING



Visit <https://engineering.nwu.ac.za/> for more information.

Change the world for the better with an NWU qualification in Engineering. We'll educate you to be an exceptional engineer who can find answers to current and future real-life challenges through cutting-edge and applied research.

Schools in the Faculty of Engineering

- Chemical and Minerals Engineering: <https://engineering.nwu.ac.za/chemical-engineering>
- Electrical, Electronic and Computer Engineering: <https://engineering.nwu.ac.za/electrical-electronic-and-computer-engineering>
- Mechanical Engineering: <https://engineering.nwu.ac.za/mechanical-engineering>
- Nuclear Engineering: <https://engineering.nwu.ac.za/nuclear-engineering>
- Industrial Engineering: <https://engineering.nwu.ac.za/industrial-engineering>

Qualification	Field	Requirements	APS	Campus
Bachelor of Engineering (BEng)	Chemical Engineering Electrical and Electronic Engineering Computer and Electronic Engineering Electromechanical Engineering Mechanical Engineering Industrial Engineering Mechatronic Engineering	<ul style="list-style-type: none"> • NS(C) with full matriculation exemption • Mathematics level 6 (70%+) • Physical Sciences level 6 (70%+) • Afrikaans OR English as Home OR First Additional Language at least level 5 (60%+) • Additional entry route: Students with 65% in both Mathematics AND Physical Sciences, and an APS of 31, may have the opportunity to write a test as additional point of entry. • Students with 40%+ in both Mathematics and Physical Sciences and at least 60% for the language of instruction can apply for the 1-year Xcel bridging programme: https://engineering.nwu.ac.za/engineering/xcel-programme • DURATION: 4 years 	34	Potchefstroom

* Language of instruction: English



Visit <https://law.nwu.ac.za/> for more information.

NWU's Faculty of Law works to equip law students with the knowledge, ethics, and skills that they will need in their professional lives. We offer quality legal education and focused research and are involved in our community.

Qualification	Field	Requirements	APS	Campus
Bachelor of Arts in Law (BA in Law)	with Psychology with Politics with Industrial Psychology	<ul style="list-style-type: none"> • NS(C) OR NC(V) for degree studies, OR with full matriculation exemption; • Home Language AND First Additional Language level 5 • SELECTION: Placement process and adherence to minimum requirements of the faculty. Academic performance is important. Limited capacity. • DURATION: 3 years 	28	Potchefstroom Vanderbijlpark
Bachelor of Commerce in Law (BCom in Law)		<ul style="list-style-type: none"> • NS(C) OR NC(V) for degree studies, OR with full matriculation exemption; • Home Language AND First Additional Language level 5 • Mathematics level 4 • SELECTION: Placement process and adherence to minimum requirements of the faculty. Academic performance is important. Limited capacity. • DURATION: 3 years 	30	Potchefstroom Vanderbijlpark
Bachelor of Laws (LLB)		<ul style="list-style-type: none"> • NS(C) OR NC(V) for degree studies, OR with full matriculation exemption; • Home Language AND First Additional Language level 5 • SELECTION: Placement process and adherence to minimum requirements of the faculty. Academic performance is important. Limited capacity. • DURATION: 4 years 	30	Mahikeng Potchefstroom
Extended Bachelor of Laws (LLB)		<ul style="list-style-type: none"> • NS(C) OR NC(V) for degree studies, OR with full matriculation exemption; • Home Language AND First Additional Language level 4 • SELECTION: Placement process and adherence to minimum requirements of the faculty. Academic performance is important. Limited capacity. • DURATION: 5 years 	28	Mahikeng

***Language of instruction is English (Additional support will be provided to students in a form of peer mentoring, tutorials, and supplementary instruction in all official languages of NWU.)**

FACULTY OF THEOLOGY



The Faculty of Theology caters for different theological traditions with our niche being reformational theology. The faculty aims in its practice of theology, to serve the church and society, both nationally and internationally by enhancing the Christian faith, the reformation of the church, and the moral renewal of society.

Schools in the Faculty of Theology

- Christian Ministry and Leadership: <https://theology.nwu.ac.za/theology/theology-reformational-foundation>
- Ancient Language and Text Studies: <https://theology.nwu.ac.za/ancient-language-and-text-studies/home>

Qualification	Requirements	APS	Campus
BA in Ancient Languages as first qualification	<ul style="list-style-type: none"> • NS(C) or NC(V) for degree studies, or with full matriculation exemption • English level 4 • DURATION: 3 years • MODE OF DELIVERY: Contact 	24	Potchefstroom
BA in Pastoral Psychology as first qualification <ul style="list-style-type: none"> • In consultation with Association of Christian Religious Practitioners (ACRP) 	<ul style="list-style-type: none"> • NS(C) or NC(V) for degree studies, or with full matriculation exemption • English level 4 • DURATION: 3 years • MODE OF DELIVERY: Contact 	26	Mahikeng Vanderbijlpark
BTh with Pastoral Counselling and Psychology as first qualification <ul style="list-style-type: none"> • In consultation with the Association of Christian Religious Practitioners (ACRP) 	<ul style="list-style-type: none"> • NS(C) or NC(V) for degree studies, or with full matriculation exemption • English level 4 • DURATION: 3 years • MODE OF DELIVERY: Contact 	24	Potchefstroom
Bachelor of Divinity (BDiv) <ul style="list-style-type: none"> In consultation with <ul style="list-style-type: none"> • Curators of the Reformed Churches in SA • Curators of the <i>Hervormde Kerk</i> • Curators of the Dutch Reformed Church 	<ul style="list-style-type: none"> • NS(C) or NC(V) for degree studies, or with full matriculation exemption • English level 4 • DURATION: 4 years • MODE OF DELIVERY: Contact; *Distance 	24	Potchefstroom *Distance
BTh with Bible Languages and Bible Translation	<ul style="list-style-type: none"> • NS(C) or NC(V) for degree studies, or with full matriculation exemption • English level 4 • DURATION: 3 years • MODE OF DELIVERY: Contact 	24	Potchefstroom
BTh in Christian Ministry as first qualification <ul style="list-style-type: none"> In consultation with the <ul style="list-style-type: none"> • Governing Body of Theological Education • Department of Education and Training of the AFM 	<ul style="list-style-type: none"> • NS(C) or NC(V) for degree studies, or with full matriculation exemption • English level 4 • DURATION: 3 years • MODE OF DELIVERY: Contact; *Distance 	24	Potchefstroom *Distance

Language of instruction is English (Prospective students from non-English speaking countries must submit a certificate of English language proficiency, either the TOEFL score sheet or results of the University of Cambridge International English Language Testing System.)



Visit <https://education.nwu.ac.za/> for more information.



The Faculty of Education prides itself on shaping the future of Education with innovative research, quality education, and a commitment to making a difference. Their quality research addresses societal challenges through community-based research that is collaborative and action-oriented.

Schools in the Faculty of Education

- Language Education: <https://education.nwu.ac.za/languages-education>
- Professional Studies in Education: <https://education.nwu.ac.za/professional-studies>
- Mathematics, Science and Technology Education: <https://education.nwu.ac.za/mathematics-sciences-technology-education>
- Commerce and Social Studies in Education: <https://education.nwu.ac.za/commerce-and-social-sciences-education>

Qualification	Field	Requirements	APS	Campus
Bachelor of Education in Early Childhood Care and Education (ECCE)		<ul style="list-style-type: none"> • A National Senior Certificate with endorsement for bachelor's studies and with appropriate subject combinations and performance levels as per Government Gazette 31231 (2008). • Language of instruction: Home Language and First Additional Language level 4 (50-59%). To register First Additional Language as Language of Learning and Teaching, a level 5 (60-69%) is required for the First Additional Language. Languages available to choose from as a Language of Learning and Teaching (LoLT) are Afrikaans, English, isiXhosa, Sesotho, or Setswana. Languages available to choose from as a Language of Conversational Competence (LoCC) are Afrikaans, isiXhosa, Sesotho, and Setswana. Please note that the LoLT and the LoCC may not be the same language. • Clearance certificate in terms of the provisions of the Children's Act, Act 38 of 2005, as persons suitable to work with babies, toddlers and young children as contemplated in section 97(3) and duly verified against Part B of the National Protection Register in accordance with section 126 of the said Act. • Basic computer literacy skills, access to a computer and sufficient Wi-Fi. • DURATION: a minimum of 4 years 	26	*Distance
Bachelor of Education (BEd) in Foundation Phase Grade R – 3		<ul style="list-style-type: none"> • Home Language and First Additional Language level 4. To register for English as a Home Language (HL), English as First Additional Language (FAL) on level 5 is required. • MC: English/Setswana as HL AND English/Setswana as FAL; • PC: Afrikaans/English/Sesotho/Setswana as HL AND Afrikaans/English/Setswana as FAL; • VC: Afrikaans/English/IsiZulu/Sesotho as HL AND Afrikaans/English/IsiZulu/Sesotho as FAL; • Distance: Afrikaans/English/IsiZulu/Sepedi/Sesotho/Setswana as HL AND Afrikaans/English/Setswana as FAL. • DURATION: 4 years 	26	Mahikeng Potchefstroom Vanderbijlpark *Distance
Bachelor of Education (BEd) in Intermediate Phase Grade 4 – 6	with Mathematics, Science and Technology	<ul style="list-style-type: none"> • Home Language AND First Additional Language level 4. To register for English as a Home Language (HL), English as First Additional Language (FAL) level 5 is required. • PC: Afrikaans/Sesotho/Setswana as HL AND English as FAL; • VC: Afrikaans/English/IsiZulu/Sesotho as HL AND Afrikaans/English/IsiZulu/Sesotho as FAL; • Subject-specific requirements: Mathematics level 3 OR Technical Mathematics level 4. • DURATION: 4 years 	26	Potchefstroom Vanderbijlpark

Qualification	Field	Requirements	APS	Campus
	with Life Skills and Social Sciences	<ul style="list-style-type: none"> Home Language AND First Additional Language level 4. To register for English as a Home Language (HL), English as First Additional Language (FAL) level 5 is required. PC: Afrikaans/Sesotho/Setswana as HL AND English as FAL; VC: Afrikaans/English/IsiZulu/Sesotho as HL AND Afrikaans/English/IsiZulu/Sesotho as FAL; Distance: Afrikaans/IsiZulu/Sepedi/Sesotho/Setswana as HL AND English as FAL. DURATION: 4 years 	26	Potchefstroom Vanderbijlpark *Distance
Bachelor of Education (BEd) in Senior and Further Education and Training Grade 7 – 12	with Economics with History with Business Studies	<ul style="list-style-type: none"> Home Language AND First Additional Language level 4 DURATION: 4 years 	26	Mahikeng Potchefstroom Vanderbijlpark *Distance
	with Geography	<ul style="list-style-type: none"> Home Language AND First Additional Language level 4 DURATION: 4 years 	26	Mahikeng Potchefstroom Vanderbijlpark
	with English	<ul style="list-style-type: none"> Subject-specific requirements: English Home Language level 4 OR English First Additional Language level 5 AND Home Language/First Additional Language level 4 DURATION: 4 years 	26	Mahikeng Potchefstroom Vanderbijlpark *Distance
	with Physical Science	<ul style="list-style-type: none"> Home Language AND First Additional Language level 4 Subject-specific requirements: Physical Sciences level 4; Mathematics level 4 OR Technical Mathematics level 5 DURATION: 4 years 	26	Mahikeng Potchefstroom Vanderbijlpark
	with Accounting	<ul style="list-style-type: none"> Home Language AND First Additional Language level 4 Subject-specific requirements: Accounting level 4 DURATION: 4 years 	26	Mahikeng Potchefstroom Vanderbijlpark *Distance
	with Mathematics	<ul style="list-style-type: none"> Home Language AND First Additional Language level 4 Subject-specific requirements: Mathematics level 5 DURATION: 4 years 	26	Mahikeng Potchefstroom Vanderbijlpark *Distance
	with Afrikaans	<ul style="list-style-type: none"> Subject-specific requirements: Afrikaans Home Language level 5 AND First Additional Language level 4 DURATION: 4 years 	26	Potchefstroom Vanderbijlpark *Distance
	with Life Science	<ul style="list-style-type: none"> Home Language AND First Additional Language level 4 Subject-specific requirements: Life Sciences level 4 DURATION: 4 years 	26	Mahikeng Potchefstroom Vanderbijlpark
	with Life Orientation	<ul style="list-style-type: none"> Home Language AND First Additional Language level 4 Subject-specific requirements: Life Orientation level 4 DURATION: 4 years 	26	Potchefstroom Vanderbijlpark *Distance
	with Engineering, Graphics and Design	<ul style="list-style-type: none"> Home Language AND First Additional Language level 4 DURATION: 4 years 	26	Potchefstroom Vanderbijlpark *Distance
	with Computer Application Technology	<ul style="list-style-type: none"> Home Language AND First Additional Language level 4 DURATION: 4 years 	26	Potchefstroom Vanderbijlpark
	with Sesotho	<ul style="list-style-type: none"> Subject-specific requirements: Sesotho Home Language level 4 AND First Additional Language level 4 DURATION: 4 years 	26	Potchefstroom Vanderbijlpark *Distance
	with Mechanical Technology with Civil Technology with Electrical Technology	<ul style="list-style-type: none"> Home Language AND First Additional Language level 4 Subject-specific requirements: Mathematics or Technical Mathematics pass rate of at least 50% in the Grade 12 examination and/or level 3 (40-49%) pass rate in Grade 12 in Physical/Technical Sciences, and any Technology subject is a recommendation for enrolling in these programmes. Students that do not meet the minimum requirements: who have passed Mathematics in Grade 12 with at least 40% OR who have passed Mathematical Literacy in Grade 12 with at least 60% with a pass rate of at least 40% for any Technology subjects in Grade 12 OR who have passed Technical Mathematics with at least 40% in Grade 12, may be allowed entry into these programmes on condition that they passes the bridging modules MTEC 111 and MTEC 121 during the first two years of study. DURATION: 4 years 	26	Potchefstroom Vanderbijlpark
	with Setswana	<ul style="list-style-type: none"> Subject-specific requirements: Setswana Home Language level 4 AND First Additional Language level 4 DURATION: 4 years 	26	Mahikeng Potchefstroom *Distance
	with Information Technology	<ul style="list-style-type: none"> Home Language AND First Additional Language level 4 DURATION: 4 years 	26	Potchefstroom
	with Art	<ul style="list-style-type: none"> Home Language AND First Additional Language level 4 DURATION: 4 years 	26	Potchefstroom *Distance
	with Mathematical Literacy	<ul style="list-style-type: none"> Home Language AND First Additional Language level 4 Subject-specific requirements: Mathematics level 3 OR Mathematical Literacy level 5 OR Technical Mathematics level 4 DURATION: 4 years 	26	Vanderbijlpark

Language of instruction is English (If students specialise in a language field, the medium of instruction will be the language of specialisation, which includes Afrikaans, Sepedi, Sesotho, Setswana, IsiZulu, IsiXhosa, IsiNdebele, SiSwati, Tshivenda, and Xitsonga.)

FACULTY OF NATURAL AND AGRICULTURAL SCIENCES



Gain a deeper understanding of science through the Faculty of Natural and Agricultural Sciences. You'll develop skills to understand, interpret, and transform our world through physical, biological, spatial, and agricultural sciences, mathematics, and information systems.

Schools in the Faculty of Natural and Agricultural Sciences

- Physical and Chemical Sciences: <https://natural-sciences.nwu.ac.za/physical-and-chemical-sciences/about-us>
- Biological Sciences: <https://natural-sciences.nwu.ac.za/biological-sciences/about-us>
- Geo- and Spatial Sciences: <https://natural-sciences.nwu.ac.za/geo-spatial-sciences/about-us>
- Mathematical and Statistical Sciences: <https://natural-sciences.nwu.ac.za/mathematical-and-statistical-sciences/about-us>
- Agricultural Sciences: <https://natural-sciences.nwu.ac.za/agricultural-sciences>
- Computer Science and Information Systems: <https://natural-sciences.nwu.ac.za/computer-sciences-and-information-systems>

Qualification	Field	Requirements	APS	Campus
Diploma in Animal Health		<ul style="list-style-type: none"> • English level 3 • Physical Science OR Life Science level 3 • Mathematics level 3 OR Technical Mathematics level 4 • DURATION: 3 years 	22	Mahikeng
Diploma in Animal Science		<ul style="list-style-type: none"> • English level 3 • Physical Science level 3 OR Life Science level 3 OR Agricultural Science level 4 • Mathematics level 3 OR Technical Mathematics level 4 OR Mathematical Literacy level 5 • DURATION: 3 years 	22	Mahikeng
Diploma in Plant Science	Crop Production	<ul style="list-style-type: none"> • English level 3 • Physical Science level 3 OR Life Science level 3 OR Agricultural Science level 4 • Mathematics level 3 OR Technical Mathematics level 4 OR Mathematical Literacy level 5 • DURATION: 3 years 	22	Mahikeng

Qualification	Field	Requirements	APS	Campus
Bachelor of Science	with Chemistry and Physics with Physics and Mathematics with Physics and Applied Mathematics with Physics and Computer Science	<ul style="list-style-type: none"> Mathematics level 5 Physical Science level 4 DURATION: 3 years 	26	Mahikeng Potchefstroom
	with Computer Science and Mathematics	<ul style="list-style-type: none"> Mathematics level 5 Physical Science level 4 DURATION: 3 years 	26	Mahikeng Potchefstroom Vanderbijlpark
	with Biochemistry and Chemistry	<ul style="list-style-type: none"> Mathematics level 4 OR Technical Mathematics level 5 Physical Science level 4 DURATION: 3 years 	26	Mahikeng Potchefstroom
	with Geography and Applied Mathematics	<ul style="list-style-type: none"> Mathematics level 5 Physical Science level 4 DURATION: 3 years 	26	Potchefstroom
	with Applied Mathematics and Chemistry with Chemistry and Mathematics	<ul style="list-style-type: none"> Mathematics level 5 Physical Science level 4 DURATION: 3 years 	26	Mahikeng Potchefstroom
	with Applied Mathematics and Electronics with Electronics and Mathematics with Electronics and Physics with Chemistry and Computer Science with Computer Science and Electronics	<ul style="list-style-type: none"> Mathematics level 5 Physical Science level 4 DURATION: 3 years 	26	Mahikeng
	with Mathematics and Economy with Computer Science and Economics	<ul style="list-style-type: none"> Mathematics level 5 DURATION: 3 years 	26	Potchefstroom Vanderbijlpark
	with Computer Science and Statistics	<ul style="list-style-type: none"> Mathematics level 5 Physical Science level 4 DURATION: 3 years 	26	Potchefstroom Vanderbijlpark
Extended Bachelor of Science	with Applied Mathematics and Chemistry with Applied Mathematics and Electronics with Biochemistry and Chemistry with Chemistry and Computer Science with Chemistry and Mathematics with Chemistry and Physics with Computer Science and Electronics with Computer Science and Mathematics with Electronics and Mathematics with Electronics and Physics with Physics and Applied Mathematics with Physics and Computer Science with Physics and Mathematics Biological Sciences with Microbiology and Biochemistry Environmental Sciences with Botany and Biochemistry Environmental Sciences with Botany and Chemistry Environmental Sciences with Botany and Microbiology Environmental Sciences with Chemistry and Geography Environmental Sciences with Geography and Botany Environmental Sciences with Geography and Computer Science Environmental Sciences with Microbiology and Chemistry Mathematical Sciences with Applied Mathematics and Mathematics	<ul style="list-style-type: none"> English level 4 Mathematics level 3 OR Technical Mathematics level 4 Physical Science level 3 DURATION: 4 years 	24	Mahikeng
Bachelor of Science in Information Technology		<ul style="list-style-type: none"> Mathematics level 4 OR Technical Mathematics level 5 DURATION: 3 years MODE OF DELIVERY: Contact and Distance 	26	Potchefstroom Vanderbijlpark *Distance
Extended Bachelor of Science in Information Technology		<ul style="list-style-type: none"> Mathematics level 3 OR Technical Mathematics level 4 DURATION: 4 years 	24	Vanderbijlpark
Bachelor of Science in Mathematical Sciences	with Statistics and Mathematics	<ul style="list-style-type: none"> Mathematics level 5 Physical Science level 4 DURATION: 3 years 	26	Potchefstroom Vanderbijlpark
	with Mathematics	<ul style="list-style-type: none"> Mathematics level 5 Physical Science level 4 DURATION: 3 years 	26	Potchefstroom
	with Applied Mathematics and Mathematics	<ul style="list-style-type: none"> Mathematics level 5 Physical Science level 4 DURATION: 3 years 	26	Mahikeng

Qualification	Field	Requirements	APS	Campus
Bachelor of Science in Biological Sciences	with Microbiology and Biochemistry with Microbiology and Botany	<ul style="list-style-type: none"> Mathematics level 4 OR Technical Mathematics level 5 Physical Science level 4 DURATION: 3 years 	26	Mahikeng Potchefstroom
	with Botany and Biochemistry	<ul style="list-style-type: none"> Mathematics level 4 OR Technical Mathematics level 5 Physical Science level 4 DURATION: 3 years 	26	Mahikeng Potchefstroom
	with Zoology and Biochemistry with Chemistry and Physiology with Zoology and Botany with Zoology and Microbiology with Zoology and Physiology with Microbiology and Physiology	<ul style="list-style-type: none"> Mathematics level 4 OR Technical Mathematics level 5 Physical Science level 4 DURATION: 3 years 	26	Mahikeng Potchefstroom
Bachelor of Science in Environmental Sciences	with Microbiology and Chemistry with Botany and Chemistry with Geography and Computer Science with Geography and Botany	<ul style="list-style-type: none"> Mathematics level 4 OR Technical Mathematics level 5 Physical Science level 4 DURATION: 3 years 	26	Mahikeng Potchefstroom
	with Zoology and Chemistry with Chemistry and Geology with Geology and Geography with Zoology and Geography with Geology and Botany with Zoology and Geology with Geology and Microbiology with Tourism and Zoology with Tourism and Geography with Tourism and Botany	<ul style="list-style-type: none"> Mathematics level 4 OR Technical Mathematics level 5 Physical Science level 4 DURATION: 3 years 	26	Potchefstroom
	with Chemistry and Geography	<ul style="list-style-type: none"> Mathematics level 5 Physical Science level 4 DURATION: 3 years 	26	Mahikeng
Bachelor of Science in Financial Mathematics		<ul style="list-style-type: none"> Mathematics level 6 DURATION: 3 years 	32	Potchefstroom Vanderbijlpark
Extended Bachelor of Science in Financial Mathematics		<ul style="list-style-type: none"> Mathematics level 4 OR Technical Mathematics level 5 DURATION: 4 years 	28	Vanderbijlpark
Bachelor of Science in Business Analytics		<ul style="list-style-type: none"> Mathematics level 6 DURATION: 3 years 	32	Potchefstroom Vanderbijlpark
Extended Bachelor of Science in Business Analytics		<ul style="list-style-type: none"> Mathematics level 4 OR Technical Mathematics level 5 DURATION: 4 years 	28	Vanderbijlpark
Bachelor of Science in Quantitative Risk Management		<ul style="list-style-type: none"> Mathematics level 6 DURATION: 3 years 	32	Potchefstroom Vanderbijlpark
Extended Bachelor of Science in Quantitative Risk Management		<ul style="list-style-type: none"> Mathematics level 4 OR Technical Mathematics level 5 DURATION: 4 years 	28	Vanderbijlpark
Bachelor of Science in Actuarial Sciences		<ul style="list-style-type: none"> Mathematics level 6 DURATION: 3 years 	32	Potchefstroom
Bachelor of Science in Urban and Regional Planning		<ul style="list-style-type: none"> Mathematics level 4 OR Technical Mathematics level 5 SELECTION TEST DURATION: 4 years 	28	Potchefstroom
Bachelor of Science in Agriculture	with Agricultural Economics with Animal Science with Agronomy and Horticulture with Animal Health	<ul style="list-style-type: none"> English level 4 Mathematics level 4 OR Technical Mathematics level 5 Physical Science OR Life Science level 4 DURATION: 4 years 	26	Mahikeng
	with Agronomy and Soil Science with Agronomy and Agricultural Economics	<ul style="list-style-type: none"> English level 4 Physical Science level 4 Mathematics level 4 OR Technical Mathematics level 5 DURATION: 4 years 	26	Potchefstroom
Bachelor of Science in Indigenous Knowledge Systems	Indigenous Knowledge Systems	<ul style="list-style-type: none"> English level 4 DURATION: 4 years 	26	Mahikeng

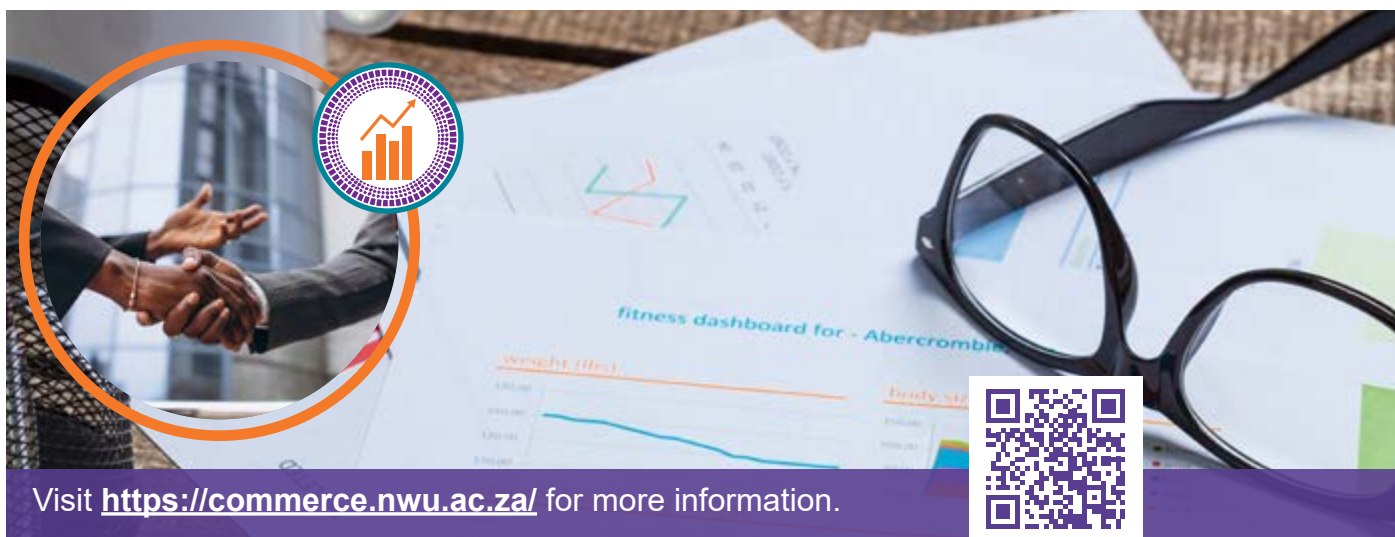
Mahikeng: Language of instruction is English.

Vanderbijlpark: Language of instruction is English, but some modules are presented in both English and Afrikaans.

Potchefstroom: Language of instruction is Afrikaans, unless otherwise indicated. Educational interpreting to English will be available in all modules (where requested).

All study guides, tests and examination papers are made available to students in both Afrikaans and English. Students may answer any written or oral test or examination in either Afrikaans or English.

FACULTY OF ECONOMIC AND MANAGEMENT SCIENCES



Visit <https://commerce.nwu.ac.za/> for more information.

The Faculty of Economic and Management Sciences aims to be an internationally recognised, innovative faculty that strives for excellence by unlocking human potential. We offer more than 30 programmes in the fields of accounting, management, marketing, human resources, tourism, and economics. We are also reckoned as one of the best institutions for Chartered Accountant studies.

Schools in the Faculty of Economic and Management Sciences

- Accounting Sciences: <https://commerce.nwu.ac.za/accounting-sciences>
- Business School: <https://www.nwu.ac.za/business-school>
- Economic Sciences: <https://commerce.nwu.ac.za/economic-sciences>
- Industrial Psychology and Human Resource Management: <https://commerce.nwu.ac.za/iphrm>
- Management Sciences: <https://commerce.nwu.ac.za/management-sciences>
- Tourism Management: <https://commerce.nwu.ac.za/tourism>

Qualification	Field	Requirements	APS	Campus
Bachelor of Commerce in Accounting (general)		<ul style="list-style-type: none"> English level 4 Mathematics level 3 DURATION: 3 years 	24	Vanderbijlpark
Bachelor of Commerce in Chartered Accountancy (CA)		<ul style="list-style-type: none"> English/Afrikaans (language of instruction) level 4 Mathematics level 5 with Accounting, OR Mathematics level 6 without Accounting DURATION: 3 years 	32	Mahikeng Potchefstroom Vanderbijlpark
Extended Bachelor of Commerce in Chartered Accountancy (CA)		<ul style="list-style-type: none"> English level 4 Mathematics level 3 DURATION: 4 years 	28	Mahikeng Vanderbijlpark
Bachelor of Commerce in Financial Accountancy (SAIPA)		<ul style="list-style-type: none"> English level 4 (language of study) Mathematics level 4 DURATION: 3 years 	28	Mahikeng Potchefstroom Vanderbijlpark
Extended Bachelor of Commerce in Financial Accountancy (SAIPA)		<ul style="list-style-type: none"> English level 4 Mathematics level 3 OR Mathematical Literacy level 7 DURATION: 4 years 	24	Mahikeng Vanderbijlpark
Bachelor of Commerce in Forensic Accountancy		<ul style="list-style-type: none"> Language of study level 5 Mathematics level 5 with Accounting, OR Mathematics level 6 without Accounting DURATION: 3 years 	36	Potchefstroom
Bachelor of Commerce in Management Accountancy (CIMA)		<ul style="list-style-type: none"> English level 4 (language of study) Mathematics level 5 DURATION: 3 years 	30	Potchefstroom Vanderbijlpark
Bachelor of Commerce in Operations Research		<ul style="list-style-type: none"> English level 4 Mathematics level 4 DURATION: 3 years 	24	Mahikeng
Bachelor of Commerce in Statistics		<ul style="list-style-type: none"> English level 4 Mathematics level 4 DURATION: 3 years 	24	Mahikeng

Qualification	Field	Requirements	APS	Campus
Extended Bachelor of Commerce in Statistics		<ul style="list-style-type: none"> English level 3 Mathematics level 3 OR Mathematical Literacy level 4 DURATION: 4 years 	20	Mahikeng
Bachelor of Commerce in Business Operations	with Logistics Management	<ul style="list-style-type: none"> English level 4 Mathematics level 3 DURATION: 3 years 	24	Mahikeng Vanderbijlpark
Extended Bachelor of Commerce in Business Operations	with Logistics Management	<ul style="list-style-type: none"> English level 3 Mathematics level 3 OR Mathematical Literacy level 4 DURATION: 4 years 	20	Mahikeng Vanderbijlpark
Bachelor of Commerce in Business Operations	with Transport Economics	<ul style="list-style-type: none"> English level 4 Mathematics level 3 DURATION: 3 years 	24	Mahikeng Vanderbijlpark
Extended Bachelor of Commerce in Business Operations	with Transport Economics	<ul style="list-style-type: none"> English level 3 Mathematics level 3 OR Mathematical Literacy level 4 DURATION: 4 years 	20	Mahikeng Vanderbijlpark
Bachelor of Commerce in Economic Sciences	with Agricultural Economics and Risk Management	<ul style="list-style-type: none"> Language of instruction level 4 Mathematics level 4 DURATION: 3 years 	26	Potchefstroom
	with Econometrics	<ul style="list-style-type: none"> English level 4 Mathematics level 3 DURATION: 3 years 	26	Mahikeng
Extended Bachelor of Commerce in Economic Sciences	with Econometrics	<ul style="list-style-type: none"> English level 3 Mathematics level 3 OR Mathematical Literacy level 4 DURATION: 4 years 	20	Mahikeng
Bachelor of Commerce in Economic Sciences	with International Trade	<ul style="list-style-type: none"> Afrikaans OR English level 4 Mathematics level 4 DURATION: 3 years 	26	Potchefstroom Vanderbijlpark
Extended Bachelor of Commerce in Economic Sciences	with International Trade	<ul style="list-style-type: none"> English level 3 Mathematics level 3 OR Mathematical Literacy level 6 DURATION: 4 years 	24	Vanderbijlpark
Bachelor of Commerce in Economic Sciences	with Economics and Informatics	<ul style="list-style-type: none"> Afrikaans OR English level 4 Mathematics level 4 DURATION: 3 years 	26	Potchefstroom Vanderbijlpark
	with Economics and Risk Management	<ul style="list-style-type: none"> Mathematics level 4 English/Afrikaans level 4 DURATION: 3 years 	26	Potchefstroom Vanderbijlpark
Extended Bachelor of Commerce in Economic Sciences	with Economics and Risk Management	<ul style="list-style-type: none"> English level 4 Mathematics level 3 OR Mathematical Literacy level 6 DURATION: 4 years 	24	Vanderbijlpark
Bachelor of Administration in Human Resources Management		<ul style="list-style-type: none"> English level 4 Mathematics level 3 OR Mathematical Literacy level 4 DURATION: 3 years 	23	Mahikeng
Extended Bachelor of Administration in Human Resource Management		<ul style="list-style-type: none"> English level 4 Mathematics level 3 OR Mathematical Literacy level 4 DURATION: 4 years 	21	Mahikeng
Bachelor of Administration in Industrial and Organisational Psychology		<ul style="list-style-type: none"> English level 4 Mathematics level 3 OR Mathematical Literacy level 4 DURATION: 3 years 	23	Mahikeng
Extended Bachelor of Administration in Industrial and Organisational		<ul style="list-style-type: none"> Mathematics level 3 OR Mathematical Literacy level 4 DURATION: 4 years 	21	Mahikeng
Bachelor of Arts	with Industrial and Organisational Psychology and Labour Relations Management	<ul style="list-style-type: none"> English/Afrikaans level 4 Mathematics level 4 or Mathematical Literacy level 5 DURATION: 3 years 	26	Potchefstroom Vanderbijlpark
	with Tourism Management	<ul style="list-style-type: none"> Afrikaans OR English level 4 DURATION: 3 years 	22	Mahikeng

Qualification	Field	Requirements	APS	Campus
Bachelor of Commerce in Management Sciences	with Marketing and Tourism Management	<ul style="list-style-type: none"> Afrikaans OR English level 4 Mathematics level 3 OR Mathematical Literacy level 6 DURATION: 3 years 	24	Potchefstroom
	with Tourism Management	<ul style="list-style-type: none"> Language of instruction level 4 Mathematics level 3 DURATION: 3 years 	24	Potchefstroom
	with Tourism and Recreation Skills	<ul style="list-style-type: none"> Afrikaans OR English level 4 Mathematics level 3 OR Mathematical Literacy level 6 DURATION: 3 years 	24	Potchefstroom
Bachelor of Commerce in Human Resource Management	with Labour Relations Management	<ul style="list-style-type: none"> English/Afrikaans level 4 Mathematics level 4 DURATION: 3 years 	30	Mahikeng Potchefstroom Vanderbijlpark
Bachelor of Commerce in Industrial and Organisational Psychology	with Labour Relations Management	<ul style="list-style-type: none"> English/Afrikaans level 4 Mathematics level 4 DURATION: 3 years 	30	Mahikeng Potchefstroom Vanderbijlpark
Bachelor of Commerce in Management Sciences	with Business Management	<ul style="list-style-type: none"> Afrikaans OR English level 4 Mathematics level 3 DURATION: 3 years 	24	Potchefstroom Mahikeng Vanderbijlpark
Extended Bachelor of Commerce in Management Sciences	with Business Management	<ul style="list-style-type: none"> English level 3 Mathematics level 3 OR Mathematical Literacy level 4 DURATION: 4 years 	20	Mahikeng
Bachelor of Commerce in Management Sciences	with Communication Management	<ul style="list-style-type: none"> Afrikaans OR English level 4 Mathematics level 3 OR Mathematical Literacy level 6 DURATION: 3 years 	24	Potchefstroom
	with Marketing Management	<ul style="list-style-type: none"> Afrikaans OR English level 4 Mathematics level 3 DURATION: 3 years 	24	Potchefstroom Mahikeng Vanderbijlpark
Extended Bachelor of Commerce in Management Sciences	with Marketing Management	<ul style="list-style-type: none"> English level 3 Mathematics level 3 OR Mathematical Literacy level 4 DURATION: 4 years 	20	Mahikeng Vanderbijlpark
Bachelor of Commerce in Management Sciences	with Sport and Business Management	<ul style="list-style-type: none"> Afrikaans OR English level 4 Mathematics level 3 OR Mathematical Literacy level 6 DURATION: 3 years 	24	Vanderbijlpark
	with Safety Management	<ul style="list-style-type: none"> Afrikaans OR English level 4 Mathematics level 3 OR Mathematical Literacy level 6 DURATION: 3 years 	24	Vanderbijlpark
Bachelor of Commerce in Information Systems		<ul style="list-style-type: none"> English level 4 Mathematics level 4 DURATION: 3 years 	26	Mahikeng
Extended Bachelor of Commerce in Information Systems		<ul style="list-style-type: none"> English level 3 Mathematics level 3 or Mathematical Literacy level 4 DURATION: 4 years 	20	Mahikeng

Mahikeng: Language of instruction is English.

Potchefstroom: Language of instruction is Afrikaans with educational interpreting available.

Vanderbijlpark: Language of instruction is English with exam papers in English and Afrikaans.





Visit <https://health-sciences.nwu.ac.za/> for more information.

The Faculty of Health Sciences is dedicated to providing you with the best healthcare education for your future. Healthcare focuses on maintaining and restoring the physical, mental, and emotional well-being of people by adhering to the standards set by the World Health Organisation (WHO). We shape the future's healthcare professionals with the necessary knowledge, skills, and values in Biomedical Science, Public Health, Nursing, and more.

Schools in the Faculty of Health Sciences

- Human Movement Sciences: <https://health-sciences.nwu.ac.za/human-movement-sciences>
- Psychosocial Health: <https://health-sciences.nwu.ac.za/psychosocial-health>
- Nursing: <https://health-sciences.nwu.ac.za/nursing>
- Pharmacy: <https://health-sciences.nwu.ac.za/pharmacy>
- Physiology: <https://health-sciences.nwu.ac.za/physiology>
- Consumer Sciences: <https://health-sciences.nwu.ac.za/consumer-sciences>
- Occupational Hygiene: <https://health-sciences.nwu.ac.za/occupational-hygiene>
- Dietetics: <https://health-sciences.nwu.ac.za/nutrition>

Qualification	Field	Subjects / Requirements	APS	Campus
Diploma in Coaching Science	Coaching	<ul style="list-style-type: none"> • National Senior Certificate • Academic paper selection; best average mark • DURATION: 2 years 	18	Mahikeng Potchefstroom
Bachelor of Health Sciences	with Physiology and Biochemistry	<ul style="list-style-type: none"> • Mathematics level 5 • Physical Sciences level 4 • Academic paper selection; best average mark • DURATION: 3 years 	24	Potchefstroom
	with Physiology and Psychology	<ul style="list-style-type: none"> • Home Language level 4 • Mathematics level 3 • Physical Sciences level 4 • Academic paper selection; best average mark • DURATION: 3 years 	26	Potchefstroom
	with Sport Coaching and Human Movement Sciences	<ul style="list-style-type: none"> • Academic paper selection; best average mark • DURATION: 3 years 	24	Mahikeng Potchefstroom
	with Recreation Science and Psychology	<ul style="list-style-type: none"> • Home Language level 4 • Academic paper selection; best average mark • DURATION: 3 years 	26	Potchefstroom
	with Recreation Science and Tourism Management with Sport and Recreation Administration	<ul style="list-style-type: none"> • Academic paper selection; best average mark • DURATION: 3 years 	24	Potchefstroom
Bachelor of Arts in Behavioural Sciences	with Psychology and Labour Relations Management	<ul style="list-style-type: none"> • Home language level 4 • Mathematics level 3 OR Mathematical Literacy level 5 • DURATION: 3 years 	26	Potchefstroom Vanderbijlpark
Bachelor of Arts	with Psychology, Geography and Environmental Management with Psychology and Tourism Management	<ul style="list-style-type: none"> • At least a level 4 for home language • Mathematical Literacy level 5 • Academic paper selection • Prospective students who have Mathematics as a subject and comply with the admission requirements will be considered automatically. • DURATION: 3 years 	26	Potchefstroom

Qualification	Field	Subjects / Requirements	APS	Campus
Bachelor of Social Sciences	with Psychology	<ul style="list-style-type: none"> At least level 4 for home language Academic paper selection DURATION: 3 years 	26	Mahikeng
Bachelor of Consumer Studies		<ul style="list-style-type: none"> At least one natural science subject (like Mathematics OR Physical Sciences OR Agricultural OR Life Sciences) passed on level 4. An average mark above 70% in Mathematical Literacy will be considered Applications close 30 June Late applications will be considered on merit SELECTION: Academic achievement. A discussion among members of a selection panel. DURATION: 3 years 	24	Potchefstroom
Bachelor of Consumer Sciences in Food Product Management	with Food Communication	<ul style="list-style-type: none"> At least one natural science subject (like Mathematics OR Physical Sciences OR Agricultural OR Life Sciences) passed on level 4. An average mark above 70% in Mathematical Literacy will be considered Applications close 30 June Late applications will be considered on merit SELECTION: Academic achievement. A discussion among members of a selection panel DURATION: 4 years 	24	Potchefstroom
Bachelor of Consumer Sciences in Food Product Management	with Food Supply	<ul style="list-style-type: none"> Mathematics level 4 If Chemistry is chosen as an elective, Physical Sciences on level 4 is required Applications close 30 June Late applications will be considered on merit SELECTION: Academic achievement. A discussion among members of a selection panel DURATION: 4 years 	24	Potchefstroom
Bachelor of Consumer Sciences in Fashion Retail Management	with Fashion Communication	<ul style="list-style-type: none"> At least one natural science subject (like Mathematics OR Physical Sciences OR Agricultural OR Life Sciences) passed on level 4. An average mark above 70% in Mathematical Literacy will be considered Applications close 30 June Late applications will be considered on merit SELECTION: Academic achievement. A discussion among members of a selection panel DURATION: 4 years 	24	Potchefstroom
Bachelor of Consumer Sciences in Fashion Retail Management	with Fashion Supply	<ul style="list-style-type: none"> Mathematics level 4 Applications close 30 June Late applications will be considered on merit SELECTION: Academic achievement. A discussion among members of a selection panel DURATION: 4 years 	24	Potchefstroom
Bachelor of Social Work		<ul style="list-style-type: none"> Language requirement: A pass mark at level 4 in the language of teaching and learning concerning home language or first additional language Applications close 30 June Late applications will be considered on merit SELECTION PROCESS: Academic paper selection and psychometric tests DURATION: 4 years 	28	Mahikeng Potchefstroom Vanderbijlpark
Bachelor of Pharmacy	Pharmacy	<ul style="list-style-type: none"> Mathematics level 5 Physical Sciences level 5 Academic paper selection; best average mark Applications close 30 June Late applications will be considered on merit DURATION: 4 years 	32	Potchefstroom
Bachelor of Science in Dietetics		<ul style="list-style-type: none"> Mathematics level 5 Physical Sciences level 5 Academic paper selection and interview Applications close 30 June Late applications will be considered on merit Participation in a "shadowing session" required before interview takes place. DURATION: 4 years 	30	Potchefstroom
Bachelor of Health Sciences in Occupational Hygiene		<ul style="list-style-type: none"> Mathematics level 5 Physical Sciences level 5 Academic paper selection; best average mark Applications close 30 June Late applications will be considered on merit DURATION: 4 years 	27	Potchefstroom

Qualification	Field	Subjects / Requirements	APS	Campus
in Biokinetics		<ul style="list-style-type: none"> Physical Sciences OR Life Sciences at least level 4 Academic paper selection; best average mark TAKE NOTE: Students should, prior to starting the course in Biokinetics, be medically fit for the fitness component of the course. Applications close 30 June Late applications will be considered on merit DURATION: 4 years 		
Bachelor of Nursing		<ul style="list-style-type: none"> A National Senior Certificate with university exemption OR an equivalent qualification English OR Afrikaans at least level 4 Physical Sciences OR Mathematics OR Life Sciences level 4 Furthermore, the School of Nursing, requires candidates: SELECTION: Selection test for first-year nursing students. Participation in the "job shadowing programme" (40 hours) is recommended before selection is finalised. The School of Nursing manages the selection. DURATION: 4 years 	25	Potchefstroom Mahikeng

Language of instruction is English or Afrikaans with educational interpreting for non-fluent students in the relevant language of instruction. Study guides, examinations and other study material/evaluations/assessments are available in English and Afrikaans.



FACULTY OF HUMANITIES



Visit <https://humanities.nwu.ac.za/> for more information.



The Faculty of Humanities focuses on understanding, interpreting, communicating, and producing knowledge about human experience and interaction that remains essential and powerful for all in higher education and the corporate world. The faculty is amongst the leaders in performing art, design, languages, linguistics, literature, history, theology, architecture, and archaeology subjects.

Schools in the Faculty of Humanities

- Communication: <https://humanities.nwu.ac.za/communication>
- Government Studies: <https://humanities.nwu.ac.za/government-studies>
- Languages: <https://humanities.nwu.ac.za/languages>
- Music: <https://humanities.nwu.ac.za/music>
- Philosophy: <https://humanities.nwu.ac.za/philosophy>
- Social Sciences: <https://humanities.nwu.ac.za/social-sciences>

Qualification	Field	Requirements	APS	Campus
SCHOOL OF GOVERNMENT STUDIES				
Bachelor of Arts (BA) in Public Governance	with Public Administration with Politics and Public Administration with Public Administration and Social Studies with Public Administration and Geography with Public Administration and Labour Relations Management	• DURATION: 3 years	25	Potchefstroom Vanderbijlpark
	with Municipal Management and Leadership	• Candidates interested in this degree must have a minimum of two years working experience within the public sector, preferably the government's local sphere. • This is a limited contact programme. • DURATION: 3 years	25	Potchefstroom
	with Policing Practice	• English level 4 (50-59%) • If Grade 12 was obtained before 2008 (National Senior Certificate) please visit https://distance.nwu.ac.za/Policing for more information on the requirements. • DURATION: 3 years	25	Distance Learning only: https://distance.nwu.ac.za/
Bachelor of Social Sciences (BSocSc)	with Political Studies and International Relations	• DURATION: 3 years	24	Mahikeng
Bachelor of Administration in Development and Management	with Local Government Management	• English level 4 (50-59%) • Mathematics level 3 (40-49%) OR Mathematical Literacy level 4 (50-59%) • DURATION: 3 years	21	Mahikeng
Extended Bachelor of Administration in Development and Management	with Local Government Management	• English level 3 (40-49%) • Mathematics level 3 (40-49%) OR Mathematical Literacy level 4 (50-59%) • DURATION: 4 years	20	Mahikeng

Qualification	Field	Requirements	APS	Campus
SCHOOL OF COMMUNICATION				
Bachelor of Arts (BA) Communication		<ul style="list-style-type: none"> English (HL or FAL) level 5 (60-69%) DURATION: 3 years 	24	Mahikeng Potchefstroom Vanderbijlpark
Bachelor of Arts (BA) in Graphic Design		<ul style="list-style-type: none"> English level 5 (60-69%) A screening process <p>The screening phase consists of:</p> <ol style="list-style-type: none"> The submission of a photo portfolio of graphics or works of art as a skills test in practical projects. Submission of an academic record; Conduct an interview. <p>Screening information is subject to change, please ensure you visit: https://humanities.nwu.ac.za/communication/bachelor-arts-graphic-design for latest information on the intake and screening procedures.</p> <p>As part of the selection criteria, students must meet the minimum requirements and successfully complete the screening phase. Thereafter, the student will be notified if their application was successful or not.</p> <ul style="list-style-type: none"> DURATION: 4 years 	24	Potchefstroom
Bachelor of Arts (BA) in Graphic Design	with Communication	<ul style="list-style-type: none"> English level 5 (60-69%) A screening process <p>The screening phase consists of:</p> <ol style="list-style-type: none"> The submission of a photo portfolio of graphics or works of art as a skills test in practical projects. Submission of an academic record; Conduct an interview. <p>Screening information is subject to change, please ensure you visit: https://humanities.nwu.ac.za/communication/bachelor-arts-graphic-design for latest information on the intake and screening procedures.</p> <p>As part of the selection criteria, students must meet the minimum requirements and successfully complete the screening phase. Thereafter, the student will be notified if their application was successful or not.</p> <ul style="list-style-type: none"> DURATION: 4 years 	24	Potchefstroom
SCHOOL OF LANGUAGES				
Bachelor of Arts (BA) in Language and Literary Studies	<p>The following subjects are offered:</p> <ul style="list-style-type: none"> English (ENLL) Language Practice (LPRA) Setswana HL (SETM) 	<ul style="list-style-type: none"> English (ENLL): Gr. 12 English HL level 4 (50-59%) OR English FAL level 5 (60-69%) Setswana for mother-tongue speakers (SETM): Gr. 12 Setswana/Sesotho/Sepedi HL level 4 (50-59%) Setswana for non-mother-tongue speakers (ATSN): no pre-requisites DURATION: 3 years 	24	Mahikeng
	<p>The following subjects are offered:</p> <ul style="list-style-type: none"> Afrikaans and Dutch (AFLL) Creative Writing (SKRK) English (ENLL) French (FREN) German (GERM) Language Practice (LPRA) Setswana – HL (SETM) Setswana – SAL (ATSN) South African Sign Language (SASL) 	<ul style="list-style-type: none"> Afrikaans (AFLL): Gr. 12 Afrikaans HL level 4 (50-59%) OR Afrikaans FAL level 5 (60-69%) English (ENLL): Gr. 12 English HL level 4 (50-59%) OR English FAL level 5 (60-69%) Setswana for mother-tongue speakers (SETM): Gr. 12 Setswana/Sesotho/Sepedi HL level 4 (50-59%) Setswana for non-mother-tongue speakers (ATSN): no pre-requisites DURATION: 3 years 	24	Potchefstroom
	<p>with Language Practice with Language Practice and Communication with Languages</p> <p>The following subjects are offered:</p> <ul style="list-style-type: none"> Afrikaans and Dutch (AFLL) English (ENLL) French (FREN) German (GERM) Language Practice (LPRA) Sesotho (SSLL) 	<ul style="list-style-type: none"> Afrikaans (AFLL): Gr. 12 Afrikaans HL level 4 (50-59%) OR Afrikaans FAL level 5 (60-69%) English (ENLL): Gr. 12 English HL level 4 (50-59%) OR English FAL level 5 (60-69%) Sesotho (SSLL): Gr. 12 Sesotho HL level 4 (50-59%) OR Sesotho FAL level 5 (60-69%) DURATION: 3 years 	24	Vanderbijlpark
Bachelor of Arts (BA) in Language Technology		<ul style="list-style-type: none"> Mathematics level 5 (60-69%) And one of the following language subjects: Afrikaans (AFLL): Gr. 12 Afrikaans HL level 4 (50-59%) OR Afrikaans FAL level 5 (60-69%) English (ENLL): Gr. 12 English HL level 4 (50-59%) OR English FAL level 5 (60-69%) Setswana for mother-tongue speakers (SETM): Gr. 12 Setswana/Sesotho/Sepedi HL level 4 (50-59%) Setswana for non-mother-tongue speakers (ATSN): no pre-requisites One of the following subjects: Information Technology, Accounting, Physical Sciences with a final mark on level 4 (50-59%). DURATION: 3 years 	24	Potchefstroom

Qualification	Field	Requirements	APS	Campus
SCHOOL OF MUSIC				
Diploma in Music (DM)		<ul style="list-style-type: none"> Completed matric / National Senior Certificate with an endorsement for diploma study At least 50% (level 4) for English in Grade 12 Successful completion of a language proficiency test, a musical aptitude test and an audition A laptop or equivalent device to participate in learning and assessment activities DURATION: 3 years 	APS of at least 18 OR an equivalent qualification in which the modules for the final year have been passed with an average of at least 60%	Potchefstroom
Bachelor of Arts (BA) in Music and Society		<ul style="list-style-type: none"> Completed matric / National Senior Certificate with an endorsement for degree study, and an APS of at least 21, and at least 50% (level 4) for English in Grade 12 OR a diploma in music or an equivalent qualification in which the modules for the final year have been passed with an average of at least 60% Successful completion of a practical audition (Grade 3 standard), a theoretical placement test (Grade 2 standard), and a language proficiency test A laptop or equivalent device to participate in learning and assessment activities DURATION: 3 years 	APS of at least 21 OR an equivalent qualification in which the modules for the final year have been passed with an average of at least 60%	Potchefstroom
Baccalaureus Musicae (BMus)		<ul style="list-style-type: none"> Completed matric / National Senior Certificate with an endorsement for degree study Successful completion of a practical audition (Grade 6 standard), a theoretical placement test (Grade 5 standard), and a language proficiency test A laptop or equivalent device to participate in learning and assessment activities DURATION: 4 years 	APS of at least 24 OR a diploma in music	Potchefstroom
SCHOOL OF PHILOSOPHY				
Bachelor of Philosophy (BPhil)	With Philosophy, Politics and Economics	<ul style="list-style-type: none"> DURATION: 3 years 	26	Potchefstroom
Bachelor of Arts (BA) Humanities	with Afrikaans and Dutch	<ul style="list-style-type: none"> Afrikaans (AFLL): Gr. 12 Afrikaans HL level 4 (50-59%) OR Afrikaans FAL level 5 (60-69%) DURATION: 3 years 	24	Potchefstroom Vanderbijlpark
	with English	<ul style="list-style-type: none"> English (ENLL): Gr. 12 English HL level 4 (50-59%) OR English FAL level 5 (60-69%) DURATION: 3 years 	24	Mahikeng Potchefstroom Vanderbijlpark
	with Setswana	<ul style="list-style-type: none"> Setswana (SETM): Gr. 12 Setswana HL level 4 (50-59%) OR Setswana FAL level 5 (60-69%) DURATION: 3 years 	24	Mahikeng Potchefstroom
	with Sesotho	<ul style="list-style-type: none"> Sesotho (SSLL): Gr. 12 Sesotho HL level 4 (50-59%) OR Sesotho FAL level 5 (60-69%) DURATION: 3 years 	24	Vanderbijlpark
	with Social Sciences (PC, VC) with Psychology (MC, PC, VC) with History (MC, PC, VC) with Geography (MC, PC, VC) with French (PC, VC) with German (PC) with History of Art (PC) with Latin (PC) with Politics (PC, VC) with Social Anthropology (PC) with Sociology (MC, PC, VC) with Philosophy (MC, PC) with History and Society (MC, VC) with Psychology and Society (MC, PC, VC) with Geography and Society (MC, VC) with Politics and Society (VC)	<ul style="list-style-type: none"> DURATION: 3 years Please take note of the language entrance requirements <ul style="list-style-type: none"> Afrikaans (AFLL): Gr. 12 Afrikaans HL level 4 (50-59%) OR Afrikaans FAL level 5 (60-69%) English (ENLL): Gr. 12 English HL level 4 (50-59%) OR English FAL level 5 (60-69%) Setswana (SETM): Gr. 12 Setswana HL level 4 (50-59%) OR Setswana FAL level 5 (60-69%) Sesotho (SSLL): Gr. 12 Sesotho HL level 4 (50-59%) OR Sesotho FAL level 5 (60-69%) 	24	Mahikeng Potchefstroom Vanderbijlpark
SCHOOL OF SOCIAL SCIENCES				
Bachelor of Social Sciences (BSocSc)	with Development Studies (MC) with Geography (MC, PC, VC) with History (MC, PC, VC) with Population Studies (MC) with Psychology and Social Sciences (MC, PC, VC) with Social Anthropology (PC, VC) with Sociology (MC, PC, VC)	<ul style="list-style-type: none"> DURATION: 3 years Please take note of the language entrance requirements <ul style="list-style-type: none"> Afrikaans (AFLL): Gr. 12 Afrikaans HL level 4 (50-59%) OR Afrikaans FAL level 5 (60-69%) English (ENLL): Gr. 12 English HL level 4 (50-59%) OR English FAL level 5 (60-69%) Setswana (SETM): Gr. 12 Setswana HL level 4 (50-59%) OR Setswana FAL level 5 (60-69%) Sesotho (SSLL): Gr. 12 Sesotho HL level 4 (50-59%) OR Sesotho FAL level 5 (60-69%) 	22	Mahikeng Potchefstroom Vanderbijlpark
	with Economics (MC, VC, PC)	<ul style="list-style-type: none"> Mathematics level 3 (40-49%) DURATION: 3 years Please take note of the language entrance requirements <ul style="list-style-type: none"> Afrikaans (AFLL): Gr. 12 Afrikaans HL level 4 (50-59%) OR Afrikaans FAL level 5 (60-69%) English (ENLL): Gr. 12 English HL level 4 (50-59%) OR English FAL level 5 (60-69%) Setswana (SETM): Gr. 12 Setswana HL level 4 (50-59%) OR Setswana FAL level 5 (60-69%) Sesotho (SSLL): Gr. 12 Sesotho HL level 4 (50-59%) OR Sesotho FAL level 5 (60-69%) 	22	Mahikeng Potchefstroom Vanderbijlpark

Qualification	Field	Requirements	APS	Campus
Bachelor of Arts (BA)	with Sociology and Geography with Sociology and Labour Relations Management	• DURATION: 3 years	22	Potchefstroom
Bachelor of Arts (BA) in Behavioural Sciences	with Sociology and Psychology	• DURATION: 3 years	22	Potchefstroom Vanderbijlpark

Language of instruction is English or Afrikaans with educational interpreting for non-fluent students (Students taking Afrikaans modules will be required to complete all assessments in Afrikaans. No exceptions can be made).





#MyNWU

IT ALL STARTS HERE®



MEET THE #NWUEAGLES!



theNWU



NWU - North-West University



@my_nwu



North-West University | Noordwes-Universiteit



@theNWU



NWU North-West University



studies.nwu.ac.za



0860 1 69698 (MyNWU)



studies@nwu.ac.za

